

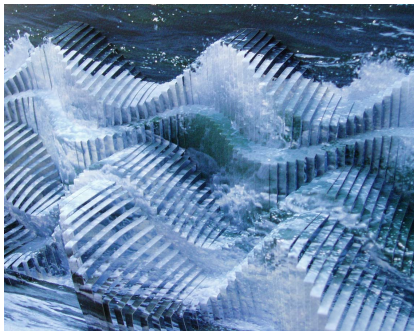
---

## Part XVII Connecting the Dots Part 8

Author : Meiliken

Date : 07-01-2020

### The Folding of Space



Before we get into the wells of living waters dug by our forefathers, we want to circle back to the global structure of the Torah, the *Alef-bet*, and the universe. This section of the series will be deeper than most and thus more profound. The mathematics is not more complex, but perhaps a little more abstract and enlightening.

The total number of the **5** main elements—Words, Letters, Verses, Rows and Columns—in the Torah is **401,273** or **248,000/ Phi (?)**. The total number of the **3** main elements—Words, Letters, Verses—in the Torah is **390,625** or **5<sup>8</sup>**. The Rows and Columns portion of these numbers is **10,648** or **22<sup>3</sup>**. As we will see later in this section, it is not coincidental that the Rows and Columns in the Torah are the cube of **22**, as in the **22** letters of the *Alef-bet*. When the Tower of Truth is extended to **22** levels or **22** cubes, the total cumulative volume is 64,009 cubits or **40.00187<sup>3</sup>** cubic cubits. Keep in the back of your mind that **(40 – 22) = 18**. There are exactly **187** chapters in the Torah, **40** of which are in the Second Book. For anyone that has not been following this series from its inception, you can find the [entire work here](#). Combined into a single equation the relationship between the Torah's main elements is:

$$\frac{248,000}{\varphi} - 22^3 = 5^8$$

We will not get into the meaning behind these individual numbers, as we have done so numerous times in this series already, though, we do want to point out that **248,000** is equivalent to **(31 x 8000)** or **(31 x 20<sup>3</sup>)**, the **20<sup>th</sup>** cube in the **20** stacked cubes of the Tower of Truth. Moreover, *EL* (??) is G-d and has the numerical value of **31**, and there are **20** multiples of **31** in **620**, the dimension of *Keter* of the same numerical value as *Esrim*, the Hebrew word for **20**, and yes, *EL* (??) has an ordinal value of **13**, *Echad*, One, for a total gematria of **44**, as in the **44** Chanukah candles and the regressive form of *Ehyeh* (????????????), but we are looking beyond gematria for the moment:

$$\frac{248 \times 10^3}{\varphi} - 22^3 = 5^8$$

$$\frac{248(\kappa)}{\varphi} - 22^3 = 5^8$$

$$\frac{31 \times 20^3}{\varphi} - 22^3 = 5^8$$

In the last section we saw that Phi(?) creates infinity, and that Phi(?) creates harmonic order and efficiency. Phi(?) is the link between the physical field forces and the ethereal field forces. Now we must ask: What came first, the spatial structure or the document? Black fire on White fire.

### 248 Columns in the Torah

**5 Books = (Bereshit + Shemot + Vayikra + Bamidbar + Devarim) = 2480**

$$\frac{248}{\sqrt{5}} = 111 \text{ (Alef)} \rightarrow 1 \text{ (One)}$$

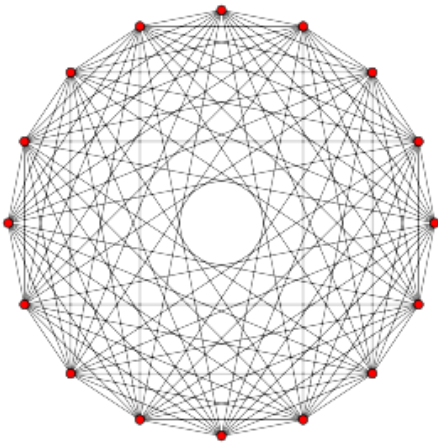
$$\frac{2480}{4} = 620 = \text{Keter} = \text{Esrin}(20)$$

$$248,000 = 620 \times 20^2$$

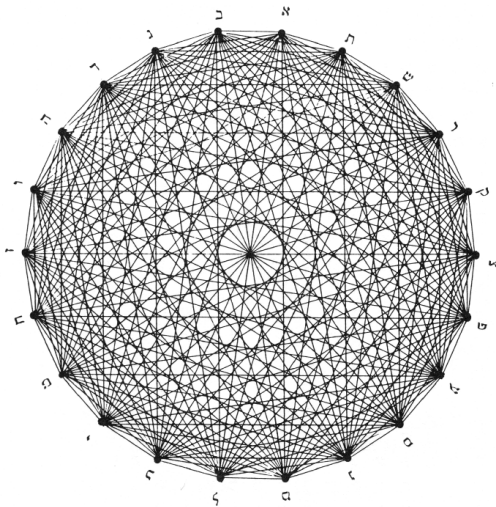
Does Abraham (248) unfold 8 times like the Torah into Abraham(?), Isaac(?), Jacob(?) and Joseph(?). There are 4 Patriarchs, 4 Archetypes, 4 Forces, 4 Movements, and 4 initials (????) that sum to 31.

Is this also a model for the folding of space?

Abraham(248) had 8 sons in total. Is this a model of the  $E_8$  Lattice supersymmetry and  $E_8$  Lie groups with 248 dimensions that are structured around the Phi(?) proportion. *Zeir Anpin* is a bundle of 6 dimensions, represented by the 6 directions of the simple cube and the 6 wells our forefathers dug to open the springs of living waters. There are 240 faces of a 6-d hypercube; might they connect with the 240 non-base dimensions of the  $E_8$  Lattice? To clarify, it has 8 base dimensions, or coordinates, and 240 non-base ones for a total of 248. Within that 248-dimensional  $E_8$  root lattice its  $E_8$  root system consist of, and is broken down into, groups of 8 vectors (roots) that conform to specific parameters, and 112 of those groups are integers.



Each point in the  $E_8$  Lattice is surrounded by **2160 8-orthoplexes** and **17280 8-simplices**. Each **8-orthoplex** is a regular **8-polytope** with **112 edges**.



You can see in the accompanying projection that the 8-orthoplex is designed the same way as the **231 Gates** that Abraham described for us in his *Sefer Yetzirah*, the difference being that Abraham used the **22 Letters** as vertices and the **8-orthoplex** has **16**.

Each point in it is surrounded by **2160 8-orthoplexes** and **17280 8-simplices**. Each **8-orthoplex** is a regular **8-polytope** with **16 vertices** and **112 edges**.  $\Phi(?)$  appears in the ratios of the quasi-crystals, and can also be seen in the eigenvalues of the eigenvector matrices within the  $E_8$  lie group. What is pictured is an  $E_9$  Lie group, the seed of infinite  $E_8$  with its eigenvalues, where  $\Phi(?)$  and  $\Phi(?)^2$  can be seen throughout.



$$\frac{(1118 + 2701 + 3701)}{2} = 3760 \text{ HC (0 CE)}$$

While:

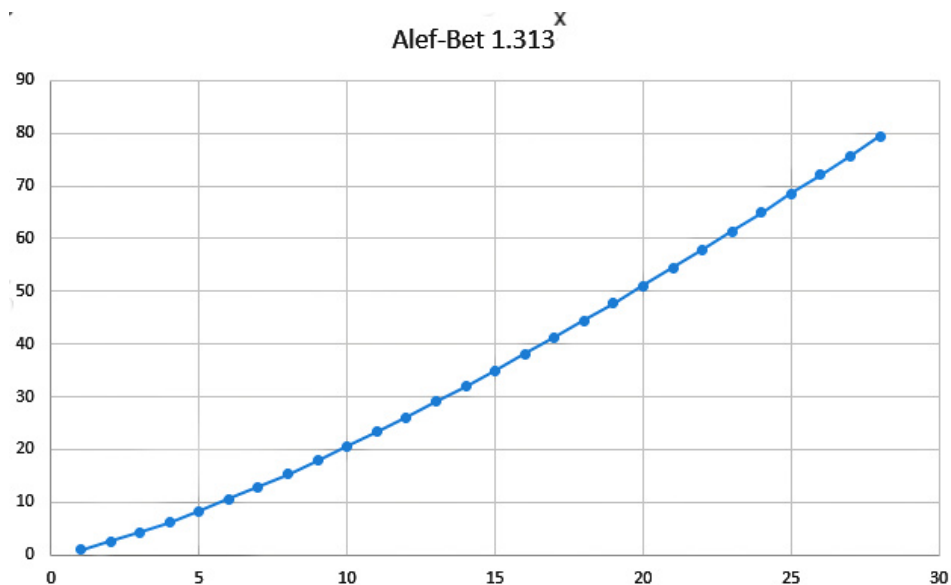
$$10,000 - (1118 + 2701 + 3701) = 2480$$

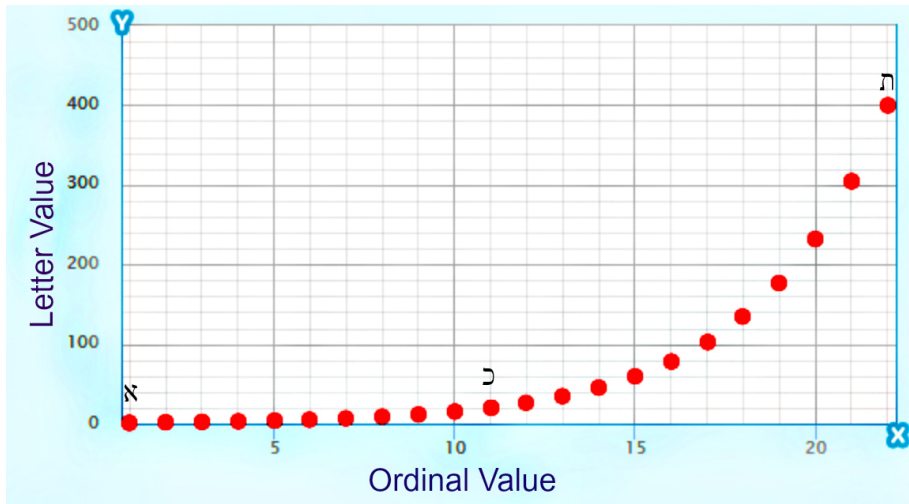
And thus:

$$10(\mathbf{N}) - (1118 + 2701 + 3701) = 2480$$

## A Hypothetical

We have revealed that the Hebrew alphabet is derived from an exponential scale based on the number **1.313** raised to the ordinal value of each letter. Later in this section we are going to reveal much more about that. Meanwhile, if we instead use an exponential scale whereby each ordinal value is raised to **1.313**, instead of the other way around, some very interesting and germane results pop out. We will call this scale hypothetical for now.

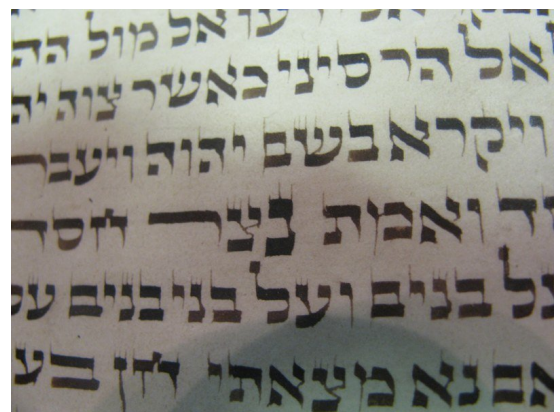




We can see the curves are quite different with the top (hypothetical) one being somewhat linear and obviously their result values for the Hebrew letters would be quite different as well. *Alef*(?) in the hypothetic model has a value of exactly 1 and *Bet*(?) has a value of 2.48... and *Gimmel*(?), 4.23... as in  $\Phi^3$ .

If we subtract the hypothetical values from the results of the exponential scale the 18<sup>th</sup> letter, *Tzadi*(?), of numerical value 90, has a difference of 90.03242... Keep in mind that the sum of the digits in mysterious repetitive 18-digit Fibonacci sequence (173553719826446289) is 90, the numerical value of water. These connections are not coincidental, as will be expanded upon below. Perhaps neither is the fact that the value of *Tzadi*(?) on the hypothetical scale is 44.480, reminiscent of 2448 HC.

Nor is it coincidental that the difference in the value of the two scales for the 21<sup>st</sup> letter, *Shin*(?) is 250.0207... with 207 being the gematria of the word for "Light," the 25<sup>th</sup> word in the Torah. The Hebrew word for candle, *ner*, has a value of 250, representing the two enlarged letters in the Torah (??). The connect to the 21<sup>st</sup> letter are more profound as will be explained shortly.





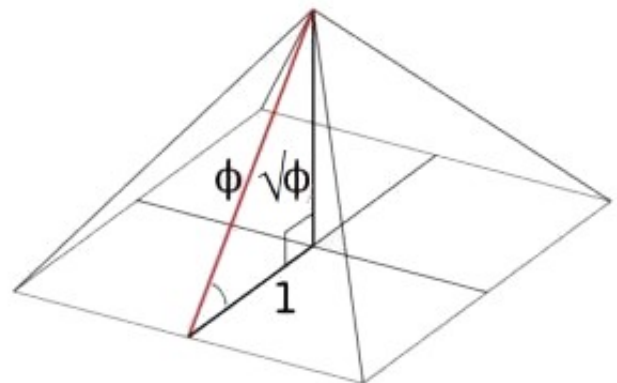


Of probable significance is that the letter *Lamed*(?) on both scales is approximately **26**, as in the *YHVH* (????), and they are only off from each other by **.133358...**

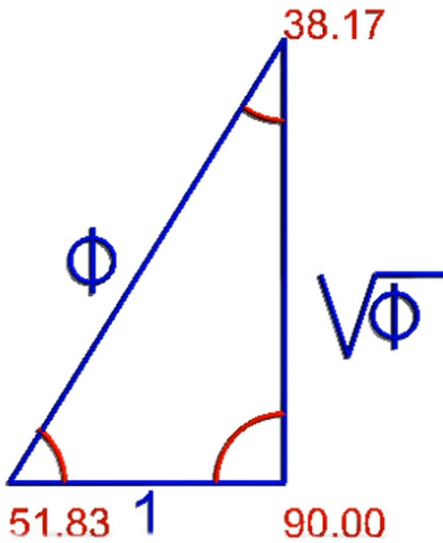
Finally, the **26<sup>th</sup>** letter, *Pe*(?) *sofit*, has a value of **72.08...** in the hypothetical scale, and the difference in the two scales is **1116.09424.....** Given all the pairs that sum to **1116** within the **4** Essential Elements comprised of the **112** Triplets, including the **72** Triplets, this connection is not coincidental either. It is interesting that *Alef* (???) in this scale is **(1 + 26 + 72)**. Further study will elucidate the deeper connection between these two star-crossed scales.

## Phi and the Secret of the Pyramid

Peter then went on to connect the Pyramid's slope angle (**51.84°**) at the



center of its faces to the **4<sup>th</sup>** of the **4** Essential Elements, the **72** Triplets in that **5184 = 72<sup>2</sup>**. That is probably no coincidence, as the slope angle of the Pyramid is **42°** at its corners, and the face to face edge angle is **112°**, and the apex angle is **76°**, as in the ordinal value of the Torah first word. Of course, they all connect to Phi(?) in that there is a Phi(?) triangle that Kepler came upon in his studies of the ellipses of the planets.



Even though the first mention in history of Phi(?) was by Euclides in about 300 BCE, many have suspected the Pyramid was based on Phi(?) proportions. As we have revealed there is a lot more than that though. Peter highlighted the Phi(?) angles to the Pyramid's slope angle ( $51.84^\circ$ ) at the center of its faces and to the 4<sup>th</sup> of the 4 Essential Elements, the 72 Triplets in that  $5184 = 72^2$ . We want to go further and explain that the number 72 is directly connected to Phi(?) and the 27.5" cubit used to build the pyramid.

First of all,  $72/27.5 = \varphi^2$ . This obviously has tremendous ramifications for the Holy Temple to be built to the same 27.5" cubit. Next,  $72/\varphi = (72 - 27.5)$ . Then  $(72 - 27.5)/2 = 22.25$ , as in the Phi(?)  $222.5^\circ$  angle, and by simple math  $5(72 - 27.5) = 222.5$ . Finally,  $72/27.5 = (1 - 1/\varphi)$ . There can be no doubt the Pyramid was built with the numbers 72, 27.5 and the Phi(?) proportion in mind. Internally, one enters the Pyramid from a height of 55' or  $2 \times 27.5$ , then they pass through a passage 42" wide before encountering the descending passage, which is  $26.18^\circ$  or  $\varphi^2$  degrees steep, and then ascending through the grand gallery, sloped at  $26^\circ$ , like the Tetragrammaton(????). Of significance, far beyond the Pyramid is that  $26\varphi = 42$ .

$$26\varphi = 42.0 \dots$$

$$\frac{72}{27.5} = \varphi^2$$

$$\frac{72}{\varphi} = (72 - 27.5)$$

$$5(72 - 27.5) = 222.5^\circ = \varphi \text{ angle}$$

$$\frac{72}{27.5} = \left(1 - \frac{1}{\varphi}\right)$$

## Secrets of the 20<sup>th</sup> Cube

Now, we will see where the 20 stacked cubes of the Tower of Truth at the core of the Pyramid



comes to play in its design once again. The Tower and the Pyramid are **210** levels and **210** cubits tall, and  $20 \times 27.5(1 - 1/\varphi) = 210.0$ . It is off from **210.09826** by only .008%. Then we know the **4** bases of the Pyramid were purposely built to **4** slightly different dimensions and the West base is within a fraction of an inch of **755.51** feet. As it turns out,  $20 \times 27.5(2 - \varphi) = 755.5148$ . Keep in mind that *Caf(?)* of numerical value **20** is the letter that is not only in the middle of the exponential curve of the *alef-bet*, but also stands out as the one precisely on curve.

$$20 \times 27.5 \left(1 - \frac{1}{\varphi}\right) = 210.0 = \textit{Pyramid Height}$$

$$20 \times 27.5 \left(2 - \sqrt{\varphi}\right) = 755.51 = \textit{Pyramid W Base}$$

The letter *Caf(?)* is the **11<sup>th</sup>** letter in the *Alef-bet* and  $(20 \times 27.5)/11 = 50$ , as in the **50**-cubit height of the gates in the Holy Temple and the **50** Gates of *Binah*.

The **20<sup>th</sup>** Cube in the Tower of Truth has a volume of **8000** cubits<sup>3</sup>, or **20<sup>3</sup>**, which matches the value of the **64** Triplet **8 x 8** square base within the **72** Triplets. The value of the separate first **8** Triplet row is **1143**. Considering the first **8** words in the Torah have **33** letters which comprise the **11** Triplets, it is interesting that **1143** beaks down to  $(1110 + 33)$  or put another way,  $(10 \times \textit{Alef}(???) + 33)$ . This is in the same manner that the **1118** value of the *Shema's* **15** Triplets breaks down to  $(1110 + 8)$  or  $(10 \times \textit{Alef}(???) + 8)$ .

11 Triplets: 8 Words = 33 Letters

15 Triplets: 1118 =  $(1110 + 8) = (111 \times 10) + 8 = 10(???) + 8$

8 Triplets: 1143 =  $(1110 + 33) = (111 \times 10) + 33 = 10(???) + 33$

64 Triplets: 8000 =  $1000 \times 8 = 8(???)$

והו	יֵלֵךְ	סִיטָה	עֵלָם	מֵהֵשֶׁבֶט	לִלְכָה	אֶכָא	כֹּהֵת
1000 הוּי	1000 אֵלֵךְ	1000 לֵאווֹ	1000 הֵהֵעֵ	1000 יֵזַל	1000 מֵבֵה	1000 הֵרִי	1000 הֵקָם
לֵאווֹ	כֹּלֵי	לוֹו	פֹּהֵל	זֵלֶךְ	יֵי	מֵלֵה	זֹהוּ
1000 נֵתָה	הֵאָא	יֵרֵת	שֵׂאָה	רֵי	אוֹם	לִכְבֵּ	וֵשֶׁר
1000 יֵזוּ	לֵהֹז	כֹּקֵ	מֵנֵד	אֵנִי	זֹעֵם	רֵהֵעַ	יֵיזֵ
1000 הֵהֵה	מֵיכֵ	וֹוֵל	יֵלֵה	סֵאֵל	עֵרִי	עֵשֶׁל	מֵיָה
1000 והו	דֵנִי	הֹזֵשׁ	עֵמֹם	נֵנָא	נֵית	מֵבֵה	פֹוּי
1000 נֵמֹם	יֵיל	הֵרֹז	מֵצֵר	וּמֹב	יֵהֵה	עֵנֹו	מֹזֹזִי
1000 דֵמֹב	מֵנֵקֵ	אֵיעַ	זֹבֹו	רֵאָה	יֵכְמוּ	הֵי	מֹוֹם

Nonetheless, when we add **1143** of the **8** Triplets to **1118** of the *Shema's* **15** Triplets we get  $(1143 + 1118) = 2261$ . This is exactly **7000** less than, and reminiscent of, the **21<sup>st</sup>** cube (**21<sup>3</sup>**)

which totals **9261**. It is also reminiscent of the sum of the Truth Cubes from  $1^3$  to  $21^3$ , which is **53361**. That sum itself, **53361** is reminiscent of the sum of the **12** permutations of the YHVH in small gematria (i.e. YHVH = 1565), which is **53328**, a difference of **33** from **53361**.

Nevertheless, it was the equation  $9261/53361 = 21^3/(1^3 - 21^3) = .173553719\dots$  that was so mysterious and intriguing, and therefore it is auspicious that  $2261/53361 = .42371\dots$  or **.424**, *Moshiach Ben David*. Auspicious and intriguing.

it is interesting that **1143** breaks down to  $(1110 + 33) = (10 \times \text{Alef}(\text{???}) + 33)$ . We are about to see just how interesting.

## From Darkness to *Moshiach*



There is another number that has a powerful and special connection with Phi ( $\phi$ ), and truthfully there are not many of them except the powers of Phi ( $\phi$ ) like **5778** as  $\phi^{18}$ . This special number is the numerical value of *Moshiach Ben David* (**424**). Not only does  $424 \phi^2 = 1110.046$  or  $10 \times \text{Alef}(\text{???})$ , but we also have  $424/\phi = 333.3281842$  or **333.33**. If you recall, **333** is the gematria for darkness, *H'choseh* (????????), and as we saw in the equation provided by the 4<sup>th</sup> verse of the Torah, "And God saw that the light was good; and God divided the light from the darkness (???????? ?????????? ??? ?????? ????? ????? ?????????????? ????????? ?????? ?????? ?????? ??????????) of numerical value **1776**, the two portions of "The Light (??????)" each of numerical value of **212** in *Moshiach Ben David* (**424**) form the proportion  $424/333 = 1.273$ . This is the proportion of inscribing a circle within a square, bounding the darkness with Light, and it is approximately  $\phi$  or **1.272019...**, which is the reason  $424/\phi = 333.33$  and not **333**. Please note that the word for "The Light (??????)" is the 4<sup>th</sup> word of the 4<sup>th</sup> verse of the Torah. Notice also that the separation between **424** and **333** is **91**, as in the unified (?????????) Names of *YHVH* (????) + *Adonai* (????) that bridge our world to the World to Come.

$$424\phi^2 = 1110.0\dots = 10(\eta\lambda\aleph)$$

$$\frac{424}{\sqrt{\phi}} = 333.33$$

If  $\text{Alef}(\text{???}) = 1000$ , and "the darkness" =  $(424/\phi) = 333.33$ , what is  $(1000 - 424/\phi)$ , which equals  $(1000 - 333.33)$ ? It is **666.66**. What follows  $\text{Alef}(\text{???})$  in the *Alef-Bet*, and what letter heads up the Torah?  $\text{Bet}(\text{???})$ , of numerical value **412**. What is  $\text{Bet}(\text{???}) \times \text{Phi}(\phi)$  (????)?  $412\phi = 666.63$

---

$$\frac{424}{\sqrt{\varphi}} + (\text{בית}) \varphi = (\text{אלף})$$

$$\frac{\text{Moshiach Ben David}}{\sqrt{\varphi}} + (\text{בית}) \varphi = (\text{אלף})$$

$$333.33 + 666.63 \cong 1000$$

### The Light and Phi

There is another association between “The Light (?????)” and Phi(?) and it relates to Pi as well, and to the mysterious repetitive Fibonacci sequence from every 4<sup>th</sup> number in it, 17355371.

$$\frac{212}{\sqrt{\varphi}} = 166.66$$

$$LN(17355371) = 16.66 \dots$$

$$1 - \frac{\varphi^2}{\pi} = .1666 \dots$$

$$1000 \left(1 - \frac{\varphi^2}{\pi}\right) = 166.65 \dots$$

$$\aleph \left(1 - \frac{\varphi^2}{\pi}\right) = \frac{212}{\sqrt{\varphi}}$$

$$\aleph \left(1 - \frac{\varphi^2}{\pi}\right) = \frac{\text{"The Light"}}{\sqrt{\varphi}}$$

$$2\aleph \left(1 - \frac{\varphi^2}{\pi}\right) = \frac{424}{\sqrt{\varphi}}$$

$$2000 \left(1 - \frac{\varphi^2}{\pi}\right) = \frac{\text{Moshiach Ben David}}{\sqrt{\varphi}}$$

According to *chazal*, the word for *alefs* is *alafim* (?????) and *alpayim* (?????), meaning thousands, and specifically signifying **2000**, as in the verse *Notzer Chesed L'Alafim* from the **13** Attributes. This refers to 2000 generations or iterations of refining the light from the darkness, good from evil.

$$\frac{212}{\sqrt{\varphi}} = 166.66$$

$$\frac{2120}{\sqrt{\varphi}} = 1666.64 = (\text{אלף}) + (\text{בית}) \varphi$$

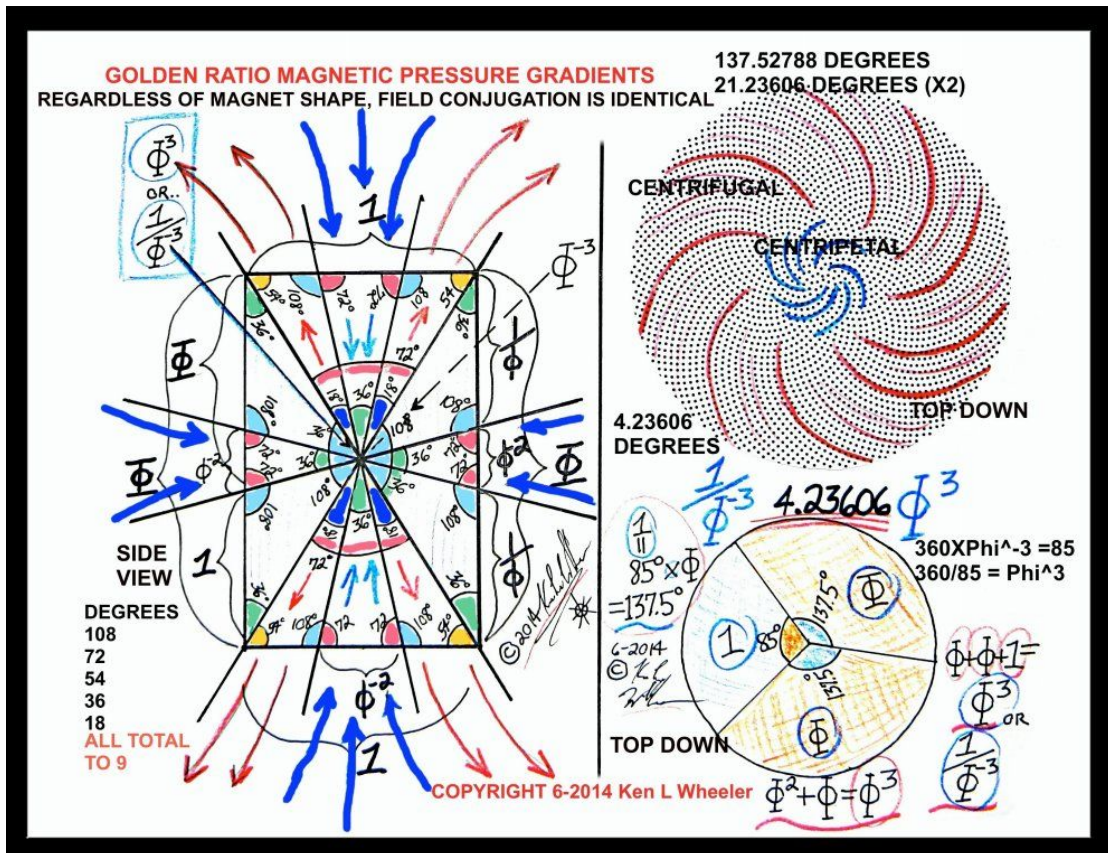
While **212** is the value of “The Light(??????), **2120** is our assumed measure for the length of the sides of the **10-cubit** tall *Chiel* within the Temple Mount, which gave us the total volume of the Holy Temple and Mount as a cube of **424 x 424 x 424** cubits, the *Moshiach Ben David* Cube.

Why are cubes so integral to these formulas? Is Phi cubed( $\phi^3$ ) = **4.2360** related to **42.4**, the *Moshiach Ben David* number? It does lead to  $\phi^3/\sqrt{\phi} = 3.330\dots$

$$\frac{\phi^3}{\sqrt{\phi}} = 3.330\dots$$

Is this why there are **3330** years between the reception of the Torah at Mt Sinai in **2448** HC and the event horizon in **5778** HC, **50** jubilee years, analogous to  $\phi^{18}$ ?

Why is Phi cubed( $\phi^3$ ) or **4.2360...** integral to the spiraling vortexes of magnetic radiation? Why the Phi( $\phi$ ) angel (**137.5°**) continually proceeds around a **360°** circle, it will generate the Phi( $\phi$ ) spiral. On a single rotation cycle there will be two turn of (**137.5°**) and a remainder of (**360° - 2(137.5°)**) = **85°**, and  $360/85 = \phi^3$ . Those two first turns (**137.5°**) and (**137.5°**) equal **275**, as in our **27.5”** cubit. So a cubit is defined as **1”** for every **10°** in two(2) Phi(**137.5°**) turns. You could not use that physically unless you built a circle with a 57.295779” radius, but it is significant metaphysically. The connection to Phi( $\phi$ ) and Pi through the circle is included in every cubit measured out and used in Holy construction, or divinely inspired construction.



## Fibonacci and 72

When the **18** mysterious number sequence (**173553719826446289**) derived from Phi( $\phi$ ) and independently from the **21<sup>st</sup>** cube ( $21^3$ ) is split into 9 pairs (1+7, 3+5, 5+3, 7+1, 9+8, 2+6, 4+4,



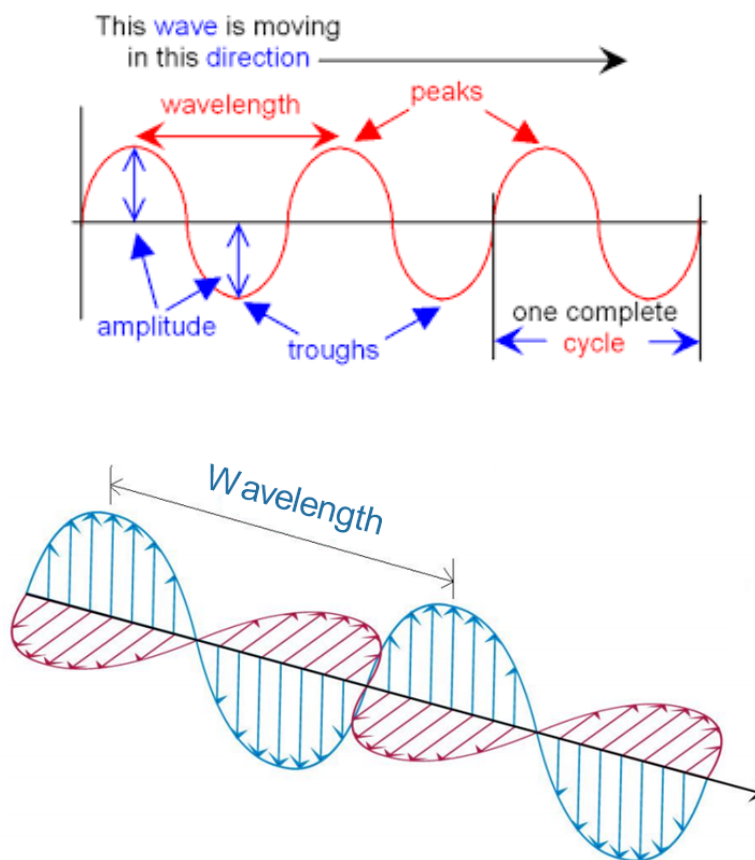
---

6+2, 8+9) and we reduce them to small gematria, we get  $(8+8+8+8+8+8+8+8) = 72$ . Keep in mind that to get these **18** repetitive numbers, we took every 4<sup>th</sup> Fibonacci number, meaning the sequence repeats every  $(4 \times 18)$  or **72** Fibonacci numbers. That is the beauty of a coherent design Created in a mind that can see infinite symmetry and how all things are connected.

## Waves, a Steering Force from Beyond

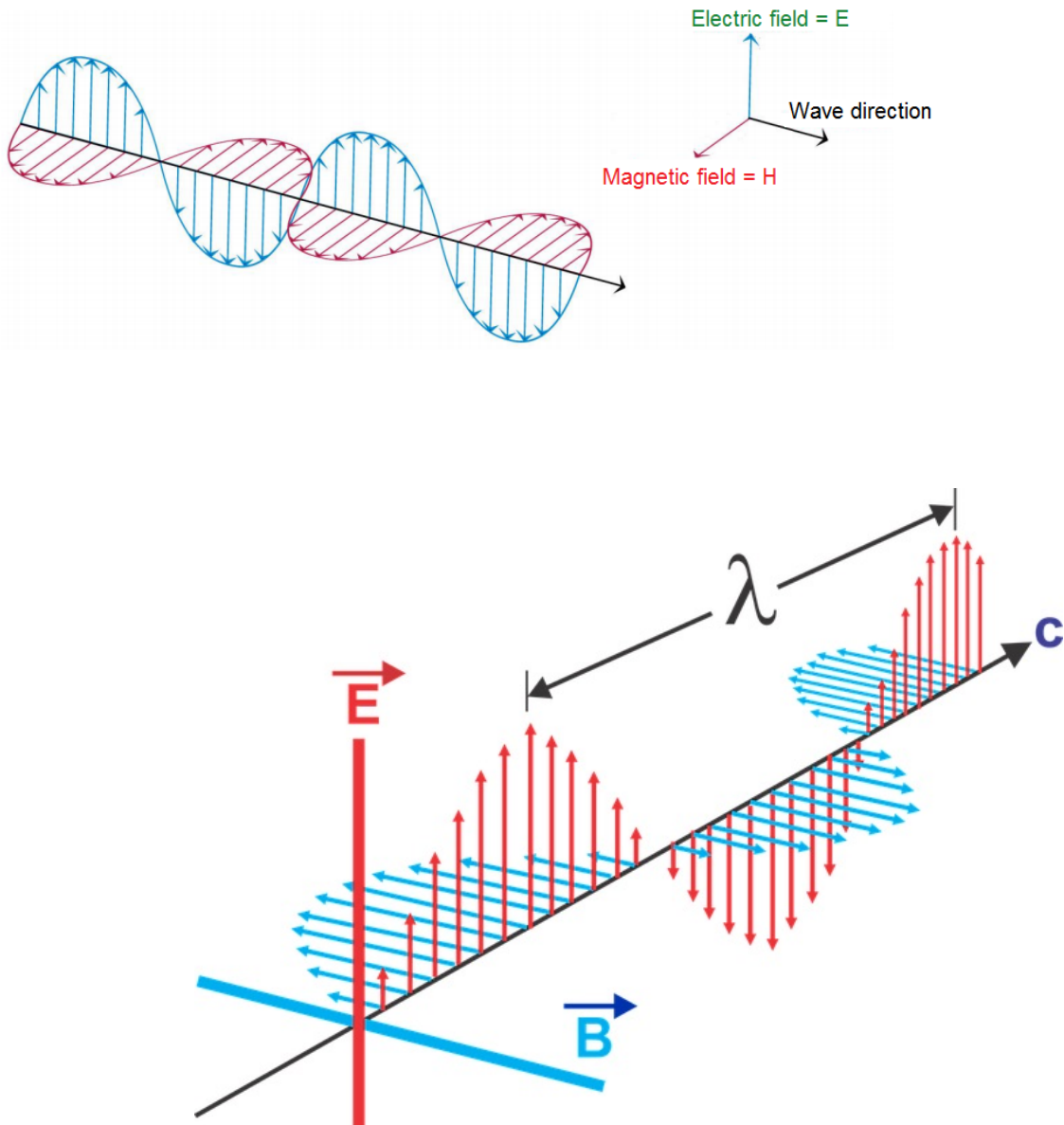
This may be abstract, but Nikola Tesla is often quoted as saying, “If you want to find the **secrets of the universe**, think in terms of energy, frequency and vibration.” Traditionally, we think of the Energy equation as  $(\text{Planck's Constant} \times \text{the Speed of Light}) / \text{Wavelength}$ , but that does not seem to fit Tesla's concept, and it is no secret either, unless it is one day found to be false, of course, as most of our scientific formulas will be in time, replaced by a better one given more data about our universe, as is logical and as was suggested by Einstein himself later in his life.

Could Tesla have been referring to the *Alef(???)*? The *Alef(?)* itself could represent Energy and the *Lamed(?)* frequency and the *Pe(?)* vibration, alternatively the representations of the *Lamed(?)* and *Pe(?)* may be reversed. Energy is the result of the combined: wave length, which is the measure of the wave from crest to crest; frequency, which is the number of full s-shaped waves or cycles within a unit of time; and vibration would be amplitude, or height of the wave at its crest off its mid-line.



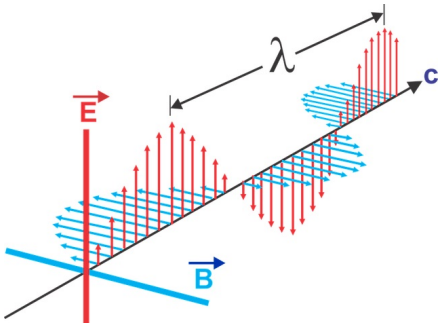
The Energy they are talking about is electromagnetic radiation, including light, radio, microwaves, and gamma rays alike.





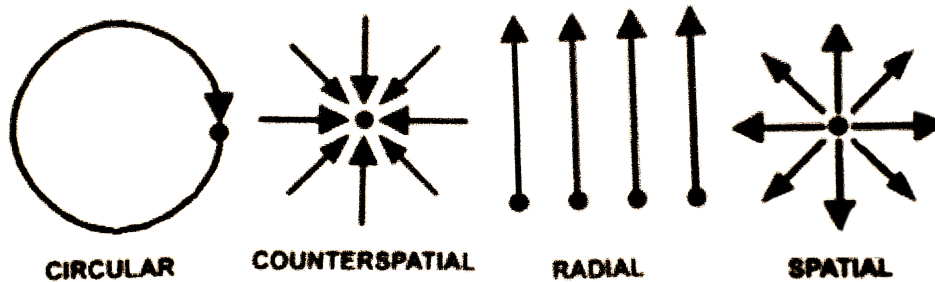
Energy is based on waves, and waves are based on ether; in other words, something metaphysical rather than physical. Yes, that is odd for scientists who abhor the notion of an ether, preferring to think that even if the vast majority of what is going on in the universe is unknown, it will still conform to the physics that we already imagine as correct. A wave is an energy transport phenomenon that transports energy along a medium without transporting matter, and in most cases in the universe that medium is unknown. Yes, a wave can propagate through water, and sound waves can glide through the molecules in the air, and waves can vibrate through solid matter, but ask yourself: how much matter is there in the universe and how solid is that matter? Exactly. Also, even when it is surging through a known medium, why does it? What keeps it straight and narrow? Why does it not veer off track? If it did, light would never reach us. It is as if waves are not really there and only exist on paper to help make the theories work better. On the other hand, we can see them in water and measure their impact, but what are they? Is the wave you see rippling over the surface of the water actually moving or has an action, like a tossed stone, caused a special chain reaction in the water? The water molecules are not going anywhere, besides up and down, so what is a wave? Waves, as scientists conceive them, do not even fit all their theories, not even on paper, let alone in reality. There are some newer and possibly better theories that are quite interesting but

not for today's discussion. First, let us understand the simpler aspects of a wave.



A disturbance within a medium, even the ether, subsequently travels along its midpoint in the wave field, never straying further than its amplitude in either direction, swinging back and forth like a perpetual pendulum, advancing cycle after cycle, sometimes for billions of years. This possibly goes on forever as and the energy just gets transferred to a new wave with energy never being lost.

Is a wave a perturbation in a field? Is the midline akin to the Plane of Potentiality, the Plane of Inertia, we saw between the two equal and opposite primal forces, divergence and divergence (curl/sink)?



Amplitude (the height of the waves) measures how much energy is being transported by the wave. The larger the amplitude, the more energy a wave has. Think of it as the volume control on a stereo, which used to be called an amplifier. The amount of energy carried by a wave is related to the amplitude of the wave. A high energy wave is characterized by a high amplitude; a low energy wave is characterized by a low amplitude. The energy transported by a wave is directly proportional to the square of the amplitude of the wave. Amplitude seems to be important, as the measure of the perturbation. It is conveying information about the energy level being passed on.

Energy increases as the wavelength decreases, which consequently causes the frequency to increase, which is why the wavelength is the critical non-fixed component of our current Energy equation (Planck's Constant x the Speed of Light)/Wavelength.

$$E = \frac{hc}{\lambda}$$

How can the  $A/ef(???)$  connect to the wave functions? We do not know and it is only a supposition at this point. We do know that the answer to the mysterious wave property of Energy must have its origins beyond the physical world and it is more likely to be an outcome of field interaction than anything else proposed so far. Nikola Tesla has rarely steered anyone

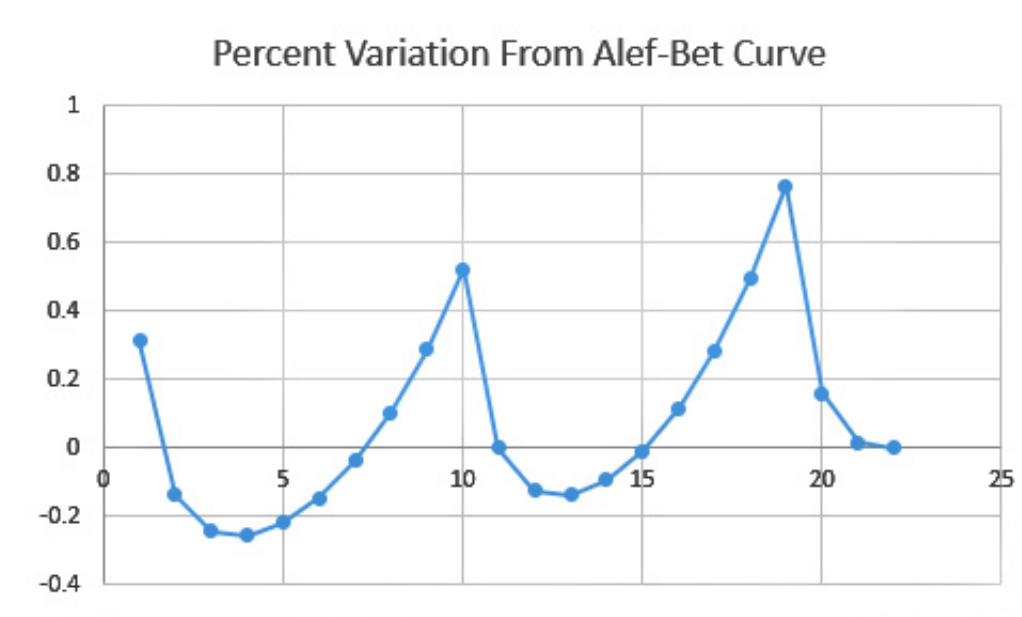
---

wrong.

Whatever they are, waves provide the order to our physical world.

## The Fractal *Alef-Bet*

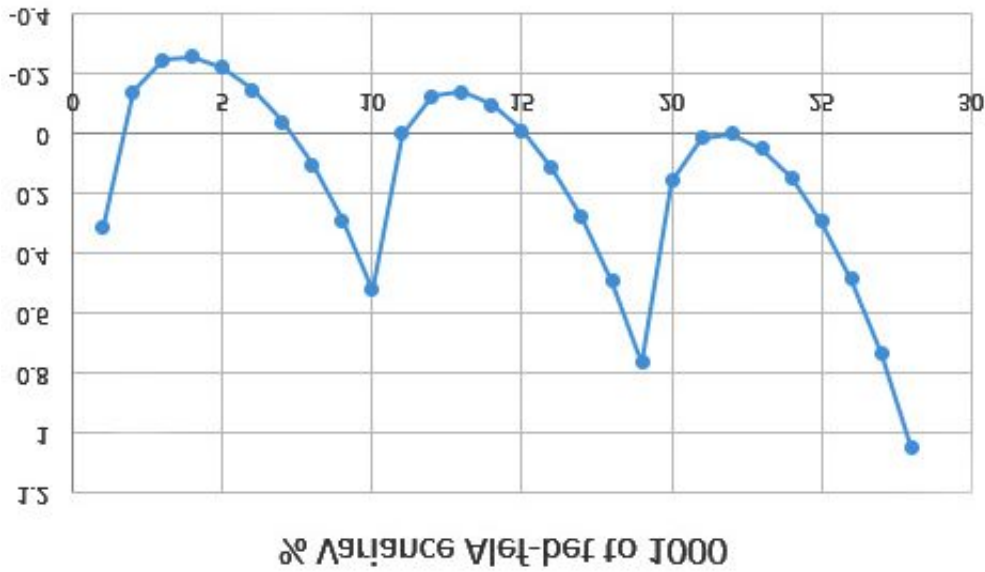
As an extremely important aside, the *alef-bet* exponential scale also displays a discernible wavelike pattern, though one a bit more fractal in nature until we look deeper when the real beauty unfolds.



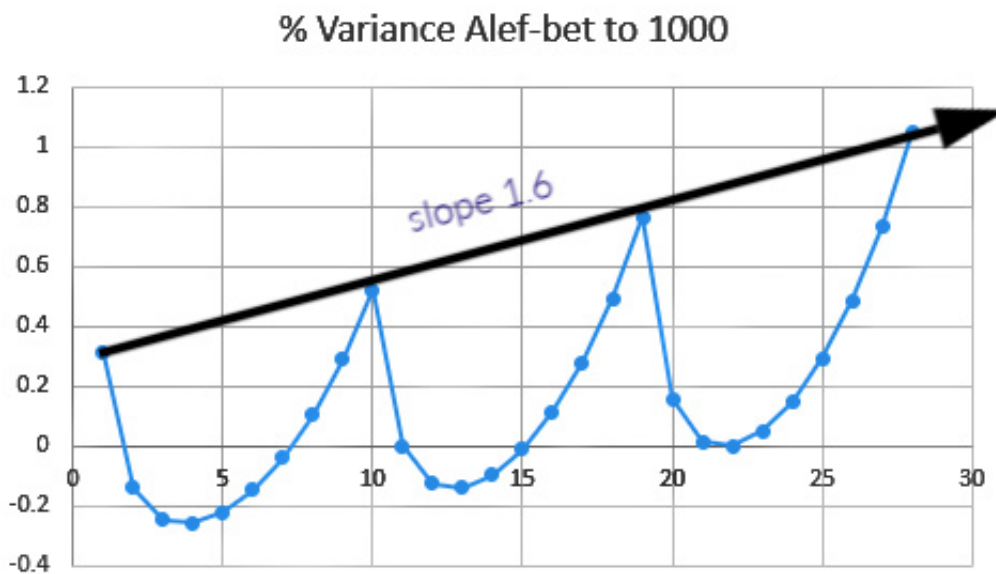
This is a line graph without the curves being smoothed out, but you can already notice a nice curved repetitive pattern, growing fractally as the *alef-bet* progresses. Notice how that curve peaks at three points, at the *Alef(?)*, the *Yud(?)* and the *Koof(?)* or numerical values **1**, **10**, and **100** respectively in exponential progression, or geometrically by a multiple of **10**. They total **111**, as in *Alef(???)*. While their ordinal values progress arithmetically by **9**: **1**, **10**, **19**. The value of the **28<sup>th</sup>** letter would be **1000**.

One further side note is that the amount the *Koof(?)* is off exactly and percentagewise from the **1.313** exponential curve compared the same amounts that the *Yud(?)* is off is **244.8**. This is most interesting because The Torah was given at Mt Sinai in the year **2448** HC and **-1313** CE. How is that for pulling something out of the ether?

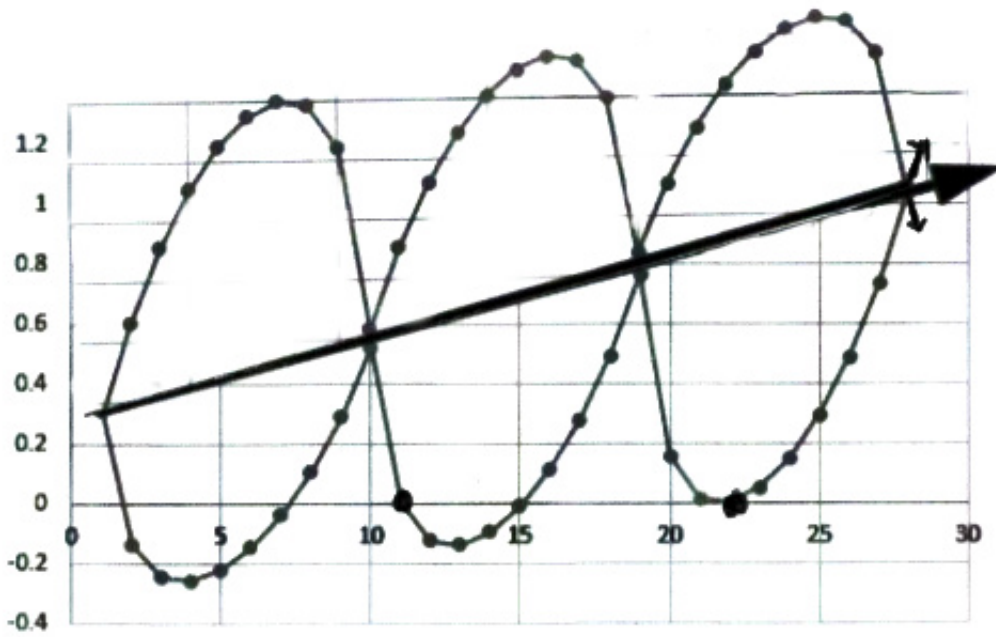
When we extend the graph to what would be the **28<sup>th</sup>** letter at value **1000**, we get the same extended fractal image of the percentage variations from the curve.



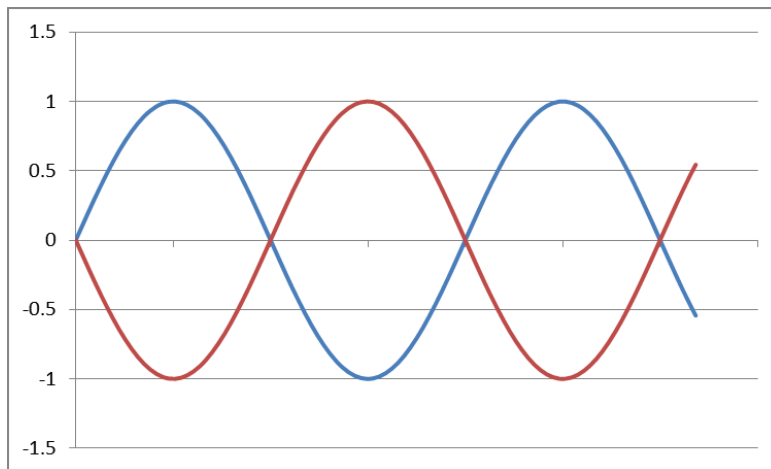
And the slope between the fractally corresponding points is **1.6**.



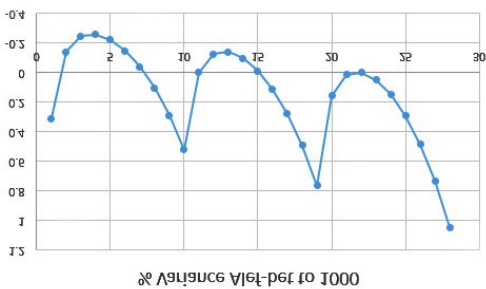
What is most interesting is that that slope line is also the *Alef(???)* line, since the values **1**, **10**, and **100** and their corresponding letters *Alef(?)*, the *Yud(?)* and the *Koof(?)* are on it. As we can see in the next graph where we flipped the variance curve along the *Alef* slope axis, that the curves are indeed symmetrical.



We can also see that it is a sine wave or at least based on one. It is bottom half of an out of phase, or cancellation, wave sine wave where the two waves cancel each other out.

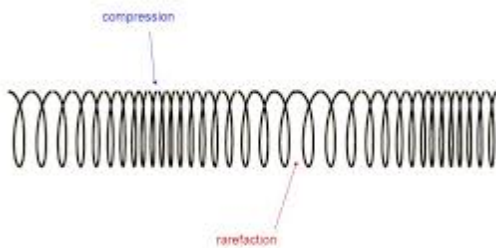


It also conforms to the top half of a longitudinal wave.



---

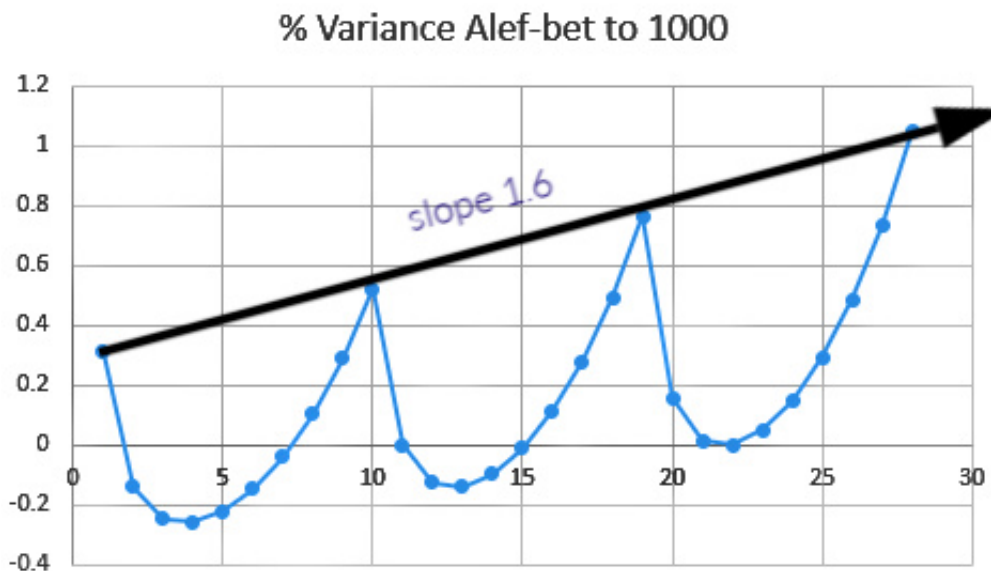
## Longitudinal waves



## Find the function of these waves and find a trove of secrets.

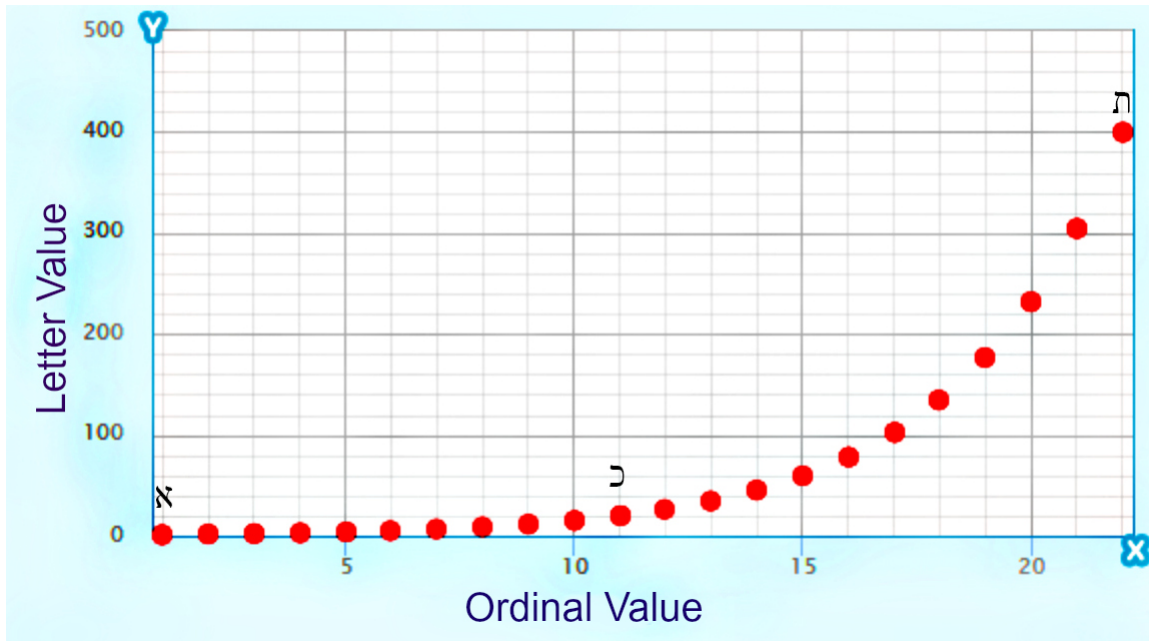
If you find the function of these waves you will find a treasure trove of secrets and a slew of new information will be revealed. Its a simple formula complicated by the slope. There are actually two very similar waves symmetrical to the slope. The coordinate points are given by the ordinal values of the letters and the exponential *Alef-bet* equation ( $y = 1.313^x$ ) Its a very different one for the longitudinal wave or slinky option.

We also need to ask what corresponds to the missing or hidden portions of the wave function? What is on the other side of the slope?



Now, remember, the actual *Alef-bet* curve looks like this, not a straight-line axis, so this sine wave is actually symmetrical along the exponential curve.





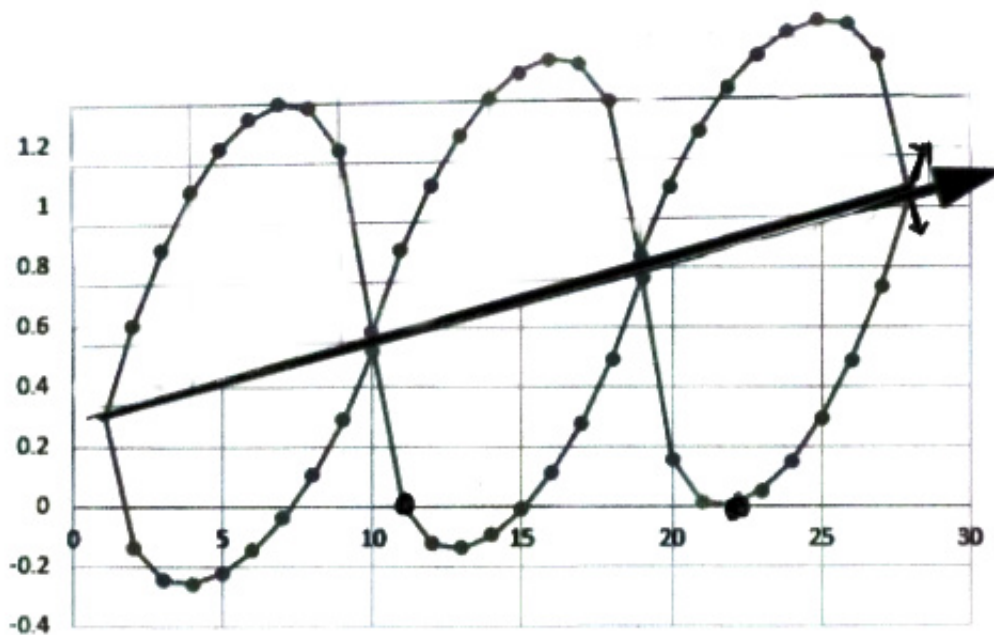
This should remove any doubts that the *Alef-bet* was meant to fit this curve based on **1.313**. So why this symmetry to the *Alef*(???) axis, whose slope is **1.6** or approximately  $\Phi$ (?)? Then when we add the absolute value for all **27** percentage variances, they equal **6.1823** or approximately  $1/\Phi$ (?) or **.618033**.... Moreover, the **21<sup>st</sup>** letter, *Shin* (?) has a variance off its nominative value (**300**) of **4.48033**... or **1.70000**... less than  $1/\Phi$ (?). And since  $17? = 27.5$ , the cubit:  $10 - \text{var}?? = 27.5$

$$\text{Shin} (\Psi) = 21\text{st Letter}$$

$$\left(\frac{1}{\varphi}\right) - \frac{\text{Shin} (\Psi)\text{Variance}}{10} = 1.70000 \dots$$

$$10 - (\varphi\Psi_{var}) = 27.5$$

One of the many treasures found within, and yet another relationship between  $\Phi$ (?) and the cubit, this time buried deep within the secrets of the *alef-bet*. The *Alef-bet* begins with the letter *Alef*(???) of numerical value One(1), but its deviation from the curve is **.313**, making its exponential value **1.313** as the starting point for both the Hebrew alphabet and the Israelites at Sinai (**1313** BCE). We explained at the outset of this series that the Hebrew letters in their pure form represented a vibrational range and not specific values. Now we understand that the range for each letter is a percentage variation from the curve conforming to a specific wave function with a specific slope. That vibration range equals the amplitude. The formula tells us Amplitude = how much Energy is being transmitted by the wave. Do certain letters transmit more energy than others? Is there an entire new science and understanding in this?



As the full wave cycle intersects the *Alef(???)* axis at *Alef(?)* and *Koof(?)* of ordinal values **1** and **19**, the wavelength is  $(19 - 1) = 18$ . How interesting!

The number **18** comes up as a  $\Phi(?)$ , comes up as our *Alef-bet* wavelength, as the mysterious repetitive Fibonacci sequence, as “Life,” and more. The square root of **18** is no less than **4.24264068...**, or both **42**-Letter Names, *Moshiach Ben David(424)*, the Tetragrammaton(**26**), etc.. So what is the meaning of  $\Phi^{18}$ ?

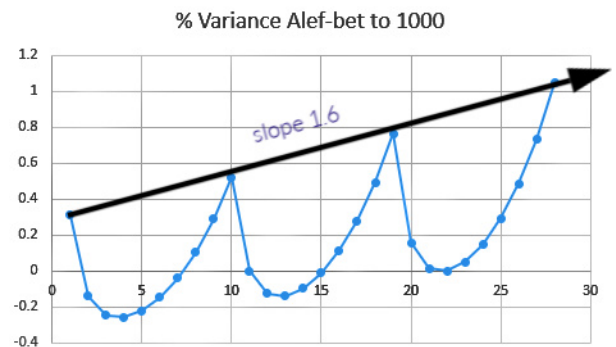
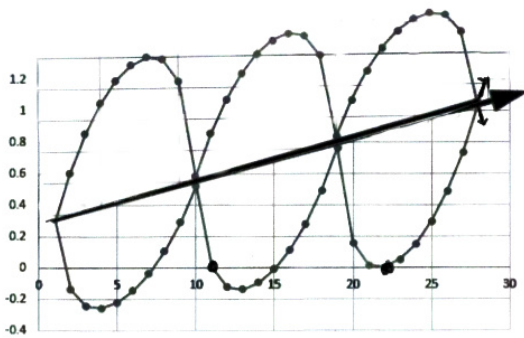
This inherent wave function imparts new meaning and vigor to each letter and word in the Torah. It shows how they expanded from **1**, from *Alef(???)* in a very precisely designed manner, and why there were both **22** and **27** letters in total. It also defined the Divine calendar by establishing the same date in both the Hebrew and Western Gregorian Calendar thousands of years before Gregorius. It ties the whole system of gematria to waves and  $\Phi(?)$  and a unified design.

By scaling the *Alef-bet* along a very specific curve so that their variances pulse along it, not in absolute terms but in percentage ones, in another specific wave function, one aligned with  $\Phi$  and 1, we have been sent a message: **PAY ATTENTION TO THE LETTERS**

That was not the only message conveyed.

Is Hebrew the language of the universe? We have used gematria only as secondary and tertiary arguments and only in a supporting role in this series, but perhaps the values assigned to these letters and words have much greater meaning and understanding than we have given them credit. And we have not even begun to discuss the shape and design of the letters. We know the shape of the *Alef(?)* has ties to  $\Phi(?)$  and the primal forces and movements in the universe. What of the other 27 letters?

## A More Profound Question



Given the opposite phased waves of the *Alef-bet* variances, is there an anti-*Alef-bet*? If there were, the percent variances from the known nominal values (1 – 400 or 900 or even 1000) would be equal and opposite to the current ones, vis-à-vis the slope line and thus on the part of the wave that we drew in. Like the scalar waves contemplated and some say utilized by Tesla, they would cancel out and create a state of potentiality.

“Scalar waves are produced when two electromagnetic waves of the same frequency are exactly out of phase (opposite to each other) and the amplitudes subtract and cancel or destroy each other. The result is not exactly an annihilation of magnetic fields but a transformation of energy back into a scalar wave. This scalar field has reverted back to a vacuum state of potentiality.”

You may ask how could the *Alef-bet* and anti-*Alef-bet* have canceled out each other if the *Alef-bet* actually exists? Does it? In what state does it exist? We feel their power, sense their meaning, but what are we really looking at when we see the letters? They are nothing more than very specific interfaces for us. They are windows; not objects. They Torah commands us not to make graven images, not to take something spiritual and make it physical.

Are the Hebrew letters physical representations of different states of potentiality? When we focus on the letters themselves, we block their potential. The numbers behind the letters help us unlock their potentials, but when we focus on those too, we trade the physical for the potential. As the kabbalists explained, we must let go. Everything we study is (should be) to bring us to a place of Understanding. That place should be the jumping off point, the leap of faith.

Can there be **22** different states of potentiality? Pure potential is absolute potential, right? What about **22** levels of potentiality. Early in this series we explained that whenever we decrease in one order of magnitude (1000 – 100 – 10 – 1...) to the next in increments of **10%** it always takes **22** steps (iterations). We can think of each state of potentiality as a level of potentiality where another veil has been lifted. A more accurate way of putting it is a different veil has been lifted with each letter.

The scalar annihilation produces a field. Do the Hebrew letters each depict different potentiality fields? We have seen how these fields guide magnetic radiation and the dielectric plane, the 4

---

movements and forces. Our Understanding is just beginning.

Why Triplets? Why do the letters form Triplets? Why 3 root letters in the Hebrew words? Do the planes of potentiality need to react together or be balanced in threes in order to properly affect our world? Is it like the *Divergent, Plane of Potential, Convergent (N/S)* dynamic?

Just be glad the Torah gave us a roadmap; imagine if we had to figure this out on our own!

## Fibonacci Water

Is there a reason the **18** mysterious digit sequence (**173553719826446289**) derived from both Phi(?) and independently from the **21<sup>st</sup>** cube (**21<sup>3</sup>**) sums to **90**, the numerical value of water(???) , the **21<sup>st</sup>** word in the Torah?

Is there a reason that the numerical difference between light (????) and the water (????) in terms of gematria is **112**?

The two palindromic sections of the sequence (17355371 and 9826446289) can be split up differently, considering that the sequence repeats itself. If we split it up instead as (9173553719 and 82644628), which would be odds and evens, like our initial splitting of the *Alef-bet*, we see that all the odd numbers are one(1) different than each of the corresponding even numbers (i.e.  $9-8 = 1$ ,  $2-1 = 1$ ,  $7-6 = 1$ ...). We also see the sum of the digits in the two palindromic sequences is no longer 32 and 58, but is now **50** and **40**, as in the **50** chapters of Genesis and **40** chapters of Exodus. This new splitting gives rise to another surprise.

We have illustrated numerous times in this series in different connotations that dividing the number **9** by the numerical string formed by the **42**-Letter Name of G-d gives us **9/1230490... = 73.141593** or **70 + Pi (3.14159365...)**. When we divide **9** by the **18**-digit Fibonacci sequence we get **9/17355371... = 51.85...**, quite close to the Phi angle **51.84**, which is also **72<sup>2</sup>**.

## Waves and Water



Water's (H<sub>2</sub>O) unique structure and very special unique properties also make it the perfect medium not only to support life, but to propagate waves. These properties include its density, its incompressibility, its surface tension, its odd freezing properties, and that it is a liquid under natural conditional and not a gas. Without all these properties there would be no life on Earth. If water was not unique in that its solid form (ice) was lighter than its liquid form, the oceans would freeze from the bottom up and freeze up completely in no time. If it were not so in-compressible, the ocean currents would stop flowing and you do not want to know what that would have done to the weather patterns and life. Do you know what the pressure is like at the bottom of a 20' deep pool? With over a mile of ocean water on top of it, water compresses less than 1%. If it were not for its surface tension, our blood vessels would be too thin for our blood to reach most of our bodies, and plants would have to grow along the ground. And these are just some of

---

water's marvelous properties.



When we think of water and waves, we picture rolling ocean waves crashing at the shore or silvery pond waves rippling over the surface. Our bodies are 80% water, and whether we realize it or not, we are constantly bombarded with waves of all sorts of frequencies: some from far off in other galaxies; some from the earth; a lot from the Sun; many from the electrical circuitry in our appliances, homes, and transmission lines; and all the time from cell towers and Wi-Fi transmitters trying to reach your cellphone and smart devices. If it was not for the water in our bodies, we would not be able to withstand this constant onslaught.

It begs the question again, what is a wave? And why is it so compatible to life-giving water? The Torah gives us the answer in its second verse, "God's spirit moved on the water's surface."

What moves on the water's surface? Waves.

"The water (????)" is which word in the Torah? The 21<sup>st</sup>, as in the Name of G-d, associated with *Binah*, *Ehyeh* (????), the place the 4 Forces and 4 Movements emanate from. It is also the 77<sup>th</sup> letter in the Torah, connecting it to *mazal*, another G-d given force, but also to the first 8 words of the Torah that comprise the 11 Triplets, one of the 4 Essential Elements of the Universe, analogous to the 4 Forces cited above. The sum of those 8 words (33 letters) is 3003, which in turn is the sum of all the integers from 1 – 77.

The value 77 is also that of the word Tower (????????), which has an ordinal value of 32. As in the verse full of secrets from Proverbs 18:10 "????????? ??? ?????? ?????? ?????? ?????? ?????? ??????????????. The name of YHVH is a strong tower; The righteous runs into it and elevated." What is the Tower in the YHVH (????)? It is the Vav(?).



Those 8 words bridge and link the first and second verses of the Torah, that begin with "In the Beginning (?????)" and end with "The water (????)."

The phrase "In the Beginning water" has an ordinal value of 112, as in the 112 Triplets.

Earlier in the second verse it states, "The earth was without form and empty," meaning there

---

was no physicality; that was until G-d injected waves. "God's spirit moved on the water's surface." Then there could be light. The very next words are "God said, 'There shall be light'" and physicists tell us light is a wave.

They also tell us it is a particle, or a particle that rides on a wave, or a wave and a particle at the same time, but not if you stop and look at it, then it changes. At any rate, they still have a lot of figuring out to do to tell us why the sun shines, but they know it has something to do with waves. Thank G-d for waves. Thank G-d for water. Thank G-d for Phi(?). Thank G-d for the Hebrew *Alef-bet*. Imagine if we had to wait for man to invent them.

One final point. My vote for the Hebrew letter that depicts the potentiality of the Wave field is the **21<sup>st</sup>** letter, *Shin* (?).

For anyone that has not been following this series from its inception, you can find the [entire work here](#).