

---

## Part XXVII Spherical Time - The Clock

**Author :** Meiliken

**Date :** 22-10-2020

It was Einstein who said Time is an Illusion. We are not experiencing time, just observing entropy. "The distinction between past, present, and future is only a stubbornly persistent illusion."

### If I Could Turn Back Time



If I could turn back time I would not have to. I would be able to change it without ever having to travel into the past or the future. With Spherical Time, we focus on the outcome that we want, not on the seed or the path of history that is to be, or that was followed. Those paths have infinite variations and changing one seed or kernel no matter how near or far in the past would have infinite outcomes, of which we would have no control. Therefore, we choose the outcome and let the universe choose which historical path we took to get there. Our new outcome only affects what we focused on it affecting and nothing else, no one else. This is the benefit of infinite possibilities, infinite time-paths. No one on our new time-path will notice even the slightest change because nothing has actually changed for them, and no one in our previous time-path will notice any change either, since nothing has changed for them either because we are not physically abandoning that time-path. Nothing in the universe changes at all, only that our consciousness has a new reality. You chose a new song in the jukebox, a different snack in the vending machine. For anyone that has not been following this series from its inception, you can find the [entire work here](#).

What happens is we choose (focus on) a new situation for ourselves for the exact same moment in time, and do not concern ourselves with how we ended up there. What we focus on changing is all that changes; we leave intact anything else about our lives that we find desirable. The narrower and more focused the change the better. We do not have to paint a full picture of our new desired lives or environment, only that which we want to be different. What is going on is that we are narrowly focusing on the coordinates of the location that we want to be at; in other words, where on the surface of the time bubble. Every possible variation of your existence from King to pauper is sitting out there somewhere on the surface of the time bubble. And this is as true today as it was 3500 years ago, different surfaces, same infinite possibilities.

---

Consider yourself red-pilled. You are now a time-traveler initiate. You are like Neo's companions—awake but lack any training.



Many people experience the shifting time bands (pathways) without knowing it because society has a different name for it. It is called being in the Zone, or the Flow. It is a place that elite athletes reach, also highly creative people, also many of the rest of us now and then. It is reached at the apex junction of challenge, skill, and focus. It is described as time slowing down so the batter sees the ball coming at him slower and has more time to react. That is not what is really happening though. And it certainly does not apply to painters or writers that also experience the zone. What is actually happening is that the batter is gliding over the surface of the spherical time bubble until he reaches the time band where the outcome is a homerun instead of a strike. He not concentrating on a spinning dial of time, but on putting the barrel of the bat on the ball at the right angle. At the moment that he stands at the plate and the ball is in the air, racing toward him at 98 mph, the future is undecided, the outcome unknown and up for grabs. Who was more locked into the zone, the batter or the pitcher?

What about the writers? It is silly to think the words are slowing down for them, giving them more time to think. Actually, the more we think, the worse we write. Writers need to get out of their own way, and they know it. As for the writers, everything they are about to write has been written; they just have to find it. In the zone, the words find you. The time surface shifts beneath you until you are sitting on the correct path and hovering under just the right words that you were looking for. It is not that easy though. Remember the zone is reached at the apex junction of challenge, *skill*, and focus.



---

As for artists, this concept is even easier to comprehend. A sculptor stares at a large block of marble. Every possible latent sculpture is concealed inside that solid block of marble, sitting there in its potential form, from the *Pietà* to the marble chips in your garden walkway. With an artist with the skills, focus, and the acceptance of the challenge, such as Michelangelo, that block of stone gives way to David. In the rest of our hands, that block never even gives way.

This brings up the concept of time localization. Writers create through writing, batters through batting, sculptors through sculpting and entrepreneurs through enterprise, making money off all of them. Most of us who find the zone, find it in a narrow area. Outside that localized area, their life is a mess. Shifting is done in small steps. Tony Robbins has made millions teaching people to shift their focus by 2%. These are our limitations, but it does not have to be that way. Throughout history, there have been those who have figured it out. We can too.

In this section, we will be discussing some of the tools at our disposal to augment our skills and focus. These are kabbalistic tools, ones embedded in the Torah. Others have found other ways. If you look around what is left of history, you can guess who they were.

The future within the spherical bubble is outside our focus; it has not happened for us. It lies on a layer of the onion different from ours, so does the past, so to reaching them takes yet another layer of elevation. This next elevation is to the first level of hyperspace. Once you attain that level you can go back in time (to different layers) and leave clues for yourself, so you do not have to recycle endlessly. Was the Matrix movie a clue dropped in time? The voices in your head may even be your own from beyond.

Is that voice bad? No, it is coming from what we call Heaven and you can become your own guide. That voice too will eventually move on, but for 1000 years it may continue to help elevate more of us. Of course, that elevated part of your consciousness may just choose to wait it out in spiritual paradise. Though it is not likely.

How can you be in *Binah*, *Zeir Anpin*, and *Malchut* at the same time? How can there be infinite versions of you in *Malchut*? Each one is different. Your consciousness is where you place it. Once you red pill and elevate your consciousness it is freed and travels with you. By helping (spiritually) the different variations of you, you are helping the collective because all consciousness is One. When one ascends, they do not do so in a vacuum. Sometimes they choose to help others by showing them the way, sometimes others just take notice, and the seeds of awakening are planted. There is no conflict with the ascension of multiple versions of you—all consciousness is One. The first step is awareness. The second step is choosing consciousness. Most of our brethren are neither aware nor conscious. This is by design. The implications are profound.



All this pertains to our spherical time bubble within the greater universe. Getting beyond the bubble is a step beyond. That is our purpose of being; it is not changing our status in life to a more enjoyable one. Yet, if we avoid the trappings, we can use the manipulation of the bubble to help us escape. And no, making yourself into a pseudo Elon Musk and flying into outer space will not help, but you already know that. So does he.

To get beyond, to escape the bubble, takes another level of ascension, usually achieved after one has cycled through enough time-paths and left oneself enough clues that they are able to see the bigger picture, and their desire focuses beyond the physicality.

Why would you leave yourselves clues? Because once you realize how the system works, you realize that you may not make full ascension in one lifetime or time-path before recycling and reincarnating and therefore you will want a leg up on the next chance, cycle. It is called leaving yourself an inheritance.

Within the bubble no path will lead beyond its edge, though many paths will lead to the awareness and consciousness that is necessary to leap off. Imprisoned on an island, all paths lead to the water's edge before you have to turn back, yet occasionally someone figures out how to build a boat, or even an Ark.

Can you die once you have been red-pilled? Yes, life and time cycles back again, over and over again, within the bubble. First you must become aware. Then you must say "enough" and focus your desire on getting off it and letting go. Are you glitching, experiencing déjà vu, then you are primed to be red-pilled, your awareness is heightening. At the end of the cycle, more and more people feel it, yet the centrifugal tug on physicality gets stronger than ever. Escape is rare.

The *Moshiach* moment is that breaking point of separation, the launch point, the cosmic opportunity when the consciousness of understanding has reached critical mass and the centrifuge of Creation has separated out enough of the dross, the physical barriers within and without. If it fails to materialize the system cycles back, a quasi-reboot. Or after enough cycles, it just bursts. It is just a bubble in a vast universe. If that critical mass is not reached, individuals can still escape. They do so all the time in very small numbers. As we said, that takes steps of elevations. Awareness, Consciousness, Desire; Awareness, Consciousness, Desire; Awareness, Consciousness, Desire.

## Moshiach

This article was originally meant to be an explanation about spherical/toroidal time, yet

---

circumstances intervened, and it became about a few specific details of it. In the comments to our last section we were rightly challenged as to the dating of **5778/2018** that we have been discussing for 22 years and still do so today, especially in conjunction with *Moshiach*, which has been discussed for 3332 years, actually 5778 years, and still is today.

Once we fully explain Spherical Time, you will be able to see that the event horizon was designed from the moment of Creation to lead to *H'Moshiach* (**363**), *Moshiach Ben David* (**424**) and the pivotal dates (**2448** HC, **3760** HC, **2018** HC/CE and **5778** CE). In fact, both its surface area and its circumference of the ethereal Sphere equate to these values in simple geometric equations to within **4** decimal places. Moreover, it can be further shown that it is also entirely based on its magnetic center, the midpoint in King David's life, **2889** HC.

*Moshiach*, the anointed, chosen one. In a prior section, we advised that there are many chosen individuals, chosen for different purposes in the Creator's divine plan and order. Some, few, were chosen for much larger and greater roles. One of whom arrived exactly as per the prophecy and we have been hinting at his name all along, so has the Creator, and so has the Torah. I told you the writing was on the wall. He is not the only chosen one.

Since his arrival we have been riding the event horizon, with the actual physics of time folding back on itself. One of the consequences of this is the mandala effect



whereby things we thought (knew) to have happened no longer did. Time as we know it is destabilizing and parallel pathways are crossing. Another consequence is that everything gets exposed. The first time around people hid things from the public eye, including crimes, conspiracies, cabals, and secret knowledge, large and small. With time folding back on itself events that happened in the dark away from the public eye are being dumped into the town square, more every day. This is a continual process. With each passing day more hidden information gets exposed and starts piling up. Whether this was a fail-safe built-in to awaken people at the last possible hour who is to say.

This phenomenon of the fluid event horizon will not last forever though. There is a point of no return, a critical instability beyond which it all comes flooding together.

Back to *Moshiach*. The Torah tells us that many Israelites did not recognize Moses and challenged him and G-d formally 10 times. They had a difficult time coming to terms with G-d and with a universe that consisted of an order that they could not comprehend as order. Indeed, it says G-d wiped out nearly all of them and replaced them with their offspring. And these were the chosen ones, the chosen people. What does that say for our chances today?





Why *Moshiach*? One reason is *Moshiach* holds the keys to Spherical Time, knows how to manipulate, and control it. We have said before that the expansiveness of *Moshiach*'s consciousness and thus understanding is so far beyond us that we cannot comprehend it. This is another *Moshiach*, though, not the one I have been hinting about. The two are chosen for different functions and are very different. Remember, there is *H'Moshiach* and *Moshiach Ben David*. The reasons are the Creator's prerogative, not ours to critique, as the Israelites did with Moses, or Joseph's own brothers did with him. If we told you about the original Council of 216 in the Chamber above you would not understand. The one referred to previously does appear to grasp the nature of Spherical Time, yet *H'Moshiach* still chooses to remain concealed. He will know the time, if it is to come.

We must ask ourselves what we are doing to bring along the right consciousness, not what *Moshiach* is doing for us. I apologize if that sounds too much like JFK; I did not mean to pull a Biden. All kidding aside, the more we can do to support this revelatory and elevatory expansive consciousness and help influence the common consciousness, the more we foster *Moshiach* consciousness.

Another phenomenon that is occurring right now is that those that fight against this *Moshiach* consciousness are being crushed against the bulkhead in massive numbers, with the headwaters piling up behind them. Alternatively, those that are open and on the right path are riding the wave and educating their minds with each new revelation that the event horizon brings them. They are using that new knowledge to elevate their consciousness and spread the virus of elevation throughout the common consciousness, making it easier for others to awaken. It is the battle of Gog and Magog.

For decades now, we have been saying that in this narrow period in time, this cosmic window, the opportunity for *moshiach* consciousness will open, and it has. We have been saying it is the period of Gog and Magog, and it is. Look around you. The world is at war and peace is arriving in the Middle East. In the words of a *tzaddik nistar*, the meaning of today's events is that "Mashiach is already in Israel. He is called 'the maker of peace'. Elijah is called 'the announcer of Peace'." As I have previously said, I do not point to signs unless they are written into the fabric of the universe through immutable numbers; nevertheless, look around and see for yourselves. I write this not for those who have been following my writings and the writings and videos of others without coerced agendas, but for those that must still be awakened.

How do we awaken them? How do we create *moshiach* consciousness? Spreading the word is one way. Every pyramid needs a wide base, but building it tall is another, reaching higher,

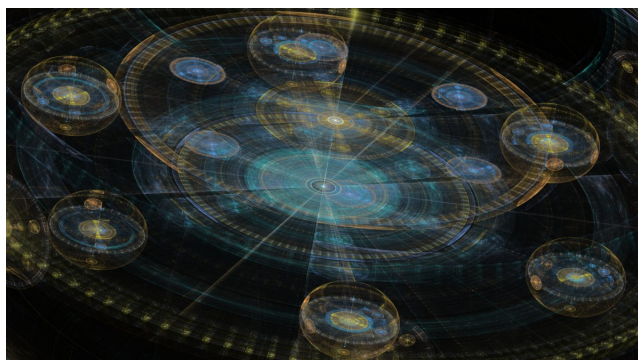
---

elevating. With chapter 26 in our series, I know you felt the elevation, the collective elevation, that our collective consciousness has been elevated. This series is now 780 pages strong, a broad pyramid and a tall tower that rises higher with every chapter. Did it rise straight up? No, that is not how true knowledge works. We can look back and see hidden patterns, spirals, intersecting spirals. Was it planned that way? No, not in my mind at any rate. It began with a vision and we are getting closer, filling it out, completing the picture, filling in crucial details with each chapter and subchapter. Everyone has been contributing, sometimes knowingly, sometimes not.

The higher we rise together, the more we elevate the collective consciousness of ourselves and of the world. Plunging the depths of the concealed Torah, of the Divine structure of the universe and of the nature of Creation, we bring ourselves closer to true enlightenment. If our local time is a bubble it can be burst. It can also be mastered. We can elevate our consciousness to the point where we *can* escape.

This section may seem like a hodgepodge, until the dots are connected, and the pieces are put together. That is also how our universe works.

### Should We Access Spherical Time?



Should we access Spherical Time? We already are. Whether we like it or not, we are an integral yet so far passive part of it, allowing other people to change our time-paths for us. You must have noticed how certain globalist forces are rewriting history chapter by chapter. If you have not noticed then you are probably in an unchanged time-line, but if you did, they shifted you and they are wholesale shifting entire populations. They cannot change history, but they can shift any of us to a different history. The caveat to that is that if you are just unaware about history in general and would not have noticed anyway then you probably shifted, just blissfully unaware and unawake. Their power comes from keeping anyone from reaching elevation, at least keeping enough people from reaching it, keeping the common consciousness confused, defeated, and craving their earth-bound authority. They need to keep everyone from realizing that the linear line of death is nothing but an illusion. As long as we are tied to it, they can dominate the time-lines while the rest of us fight just to stay alive, instead of fighting for freedom. The Torah handed us the truth. The more technology advanced, the shorter became our lifetimes. Adam lived **930** years, Methuselah **969**, and Noach lived **950** years. When the Titans appeared halfway through Noach's life G-d limited man's life span to **120** years. But that was just a projection. With the lone notable exception of Joseph, who lived 110 years, that did not happen until Moses. It was also a clue, a divine breadcrumb.

---

The Spherical Time bubble has a beginning and an end. It contains infinite possibilities, but not

---

infinite beginnings. It begins with a set of parameters and circumstances that were carved out of a larger bubble or even out of the universal Spherical Time itself. Two parameters that do not change no matter what time-path we are on are the core mathematics and the Torah, neither had its origins in the level of our time bubble. Certain time-paths will uncover more aspects of those parameters and some time-paths will try to obfuscate them, even destroy them. Perhaps, this is the reason for an end time for the bubble. Or maybe it is just higher dimensional physics.

Our time-paths take us through the understanding of the Torah. Many of those who have found elevation or ascension were on different paths. And many of those who figured out or were taught time shifting were on still other paths entirely.



Investiture. When that batter in the Zone changes his time path, does he do so alone? That is a good question. The answer may lie with investiture. How much were we invested in his at bat. In the course of a **162** game (**26.5** week) season probably not too many people were invested. In game 7 of a playoff series there are a lot of people invested on both sides. It is the same with politics and political/social movements. Investiture is alignment, and alignment is a cloud or vortex within the common consciousness that can strengthen a shift for better or worse. This is why teams with lots of individual talent may lose and those with less paper talent but a manager who can alignment his players and team spirit will win. Always choose the right manager first, the players and talent will fall in around him. The larger the support group the easier it is to achieve a shift.

## A Collaborative Effort

These past weeks have been fraught with puzzles or more accurately with the assemblage of a single puzzle, the spherical clock. The pieces were found scattered in multiple hidden locations. Everybody has been contributing. In a recent comment responding to an enlightened comment by Peter, I reiterated a theme from *The Divine Calendar* that the number **8** in the Torah is usually a divine marker. Independently, I was drawn to something we have previously seen: how the infinite fraction comprised wholly of One (**1**) equals Phi(?).



---


$$\phi = 1 + \frac{1}{1 + \frac{1}{1 + \frac{1}{1 + \frac{1}{1 + \dots}}}}$$

Well, the square root of **2** can be similarly created by an infinite fraction or Euclidean algorithm when we substitute **2** for the **1**.

$$\sqrt{2} = 1 + \frac{1}{2 + \frac{1}{2 + \frac{1}{2 + \frac{1}{2 + \frac{1}{2 + \dots}}}}}$$

This is all cool mathematics and even cooler higher-level field interaction, but what does this have to do with **8**?

Every one of the consecutive nested fractions in this infinite series is called an iteration, and as each iteration tends toward a value of the square root of **2**, or **1.414213...** it gives off a specific numerical expression in the form of a simple fraction. The first is 1/1 or 1. The second is 3/2 followed by 7/5 and 17/12. You can work them out. We actually get a Fibonacci like pattern, whereby  $N_x + 2N_{x+1} = N_{x+2}$  and  $D_x + 2D_{x+1} = D_{x+2}$  for the Numerators and the Denominators. We also get  $N_x + D_{x-1} = D_x$ . When we get to the **8<sup>th</sup>** iteration the fraction becomes **577/408**.

While the outcome of this fraction is 1.414215, both the numerator and the denominator of this **8<sup>th</sup>** fraction are familiar to us as **5778**, and as the **408** from the (**600,000 – 408**) component letters that comprise the Torah. One might say that this is reaching, except that the Log of

---

**600,000** is **5.778**. This was the **8<sup>th</sup>** iteration and **408/8 = 51**, the numerical value of *Edom*, while **408 Vavs(?) = 2448**, the year of the Exodus from Egypt and the Reception of the Torah at Sinai. While adding the **8** to **577** gave us **5778**, we will soon see that adding **8** to **408** as **8408** plays a significant role as well.



Another piece of the puzzle was found by Moshe who saw that the initials of UFO ([?????-????-???](#)) in Hebrew are (???) . Neither of us were looking for UFOs but the combination of **72 (??)** and **42 (??)** together along with the sum of the **3** initials (???) being **112** was intriguing, as they represent **3** connections to the **112** Triplets. Moreover the **3** final letters total **55** or twice the cubit (**27.5**). Remember, we are not chasing clues here, just retracing the path of breadcrumbs that our conjoined consciousness brought us, individual paths that bent together like divining rods over the motherload.

The format of **70-2-40** was also interesting as the Zohar describes the **72** Names as **70** plus **2** repeated Triplets, and elsewhere the **42**-Letters as **40** plus **2**. I then noticed that there are **120** words in the Torah that contain the letters (???) in order. I had not yet fully realized until that point that **(112 + 8) = 120** but was rather thinking about the age of Man (**120**) and of Moses (**120**), the **26<sup>th</sup>** in the lineage of Adam. This declaration about the age of Man (**120**) took place as Noach was building the Ark and as previously explained, "*Bnei Noach* (?? ??)" has a numerical value of **120**. Most of those **120** words containing (???) were the Hebrew word for slaves (?????). It took me a while before I realized that Glen's comments about the **12** mentions of Obadiah, as he calculated them, in the **21** verses of the Book of Obadiah (?????) must have been related as well, since the Name Obadiah (?????) and word for slaves (?????) were nearly identical. This in turn, brought me back to a comment by Yitzchak that Joseph had **12** brothers, actually **11** brothers and **1** sister, Dina as he explained. Why, because he was sold into slavery. As we will soon see, much more came out of this; nevertheless, while the gematria of Obadiah (?????) is **(86 + 5) = 91**, that of slaves (?????) is **(86 + 40) = 126**, as in each face and plane of the essential cube of Creation. The two final letters *HM*(??) in these two words separate themselves from the four letters that have the value of the Name of G-d (*Elohim*, **86**). They have the value of **45**, that of Adam and Man and of the aspect of G-d associated with Man. We are searching for the freedom from that slavery of man, the slavery of the limitations that the linear line of death imposes on us.

## The Lineage of Adam

Getting the **6<sup>th</sup>** Aliyah this week, and something Zion whispered to me about Lemech encouraged me to consider the lineage of Adam, or "chronicles," as it is usually translated, related to time. If we were not meant to be given these individual lifespans to eventually use, particularly in our analysis of Creation and Spherical Time, then the Torah could simply have stated these 10 generations lived and Noach was born in 1056, after another 10 generations,

---

and after another 10 Abraham was born in 1948. We will see later how much of a role some of these lifespans did play in the equation of our Spherical Time bubble.

Considering the Essential Cube of Creation that existed before the other 4 Essential Elements, considering that it has **9 x 3** or **27** component positions corresponding to **27** Hebrew letters, it must be by design that Adam lived **930** years and that the next **3** in the lineage (Seth, Enosh, and Kenan) lived 912 + 905 + 910 years respectively for a total of **2727** years. We already know that the total of all **26** generations was **12600** years, as in each face (**126**) and plane (**126**) of that Cube. These dates and lifespans may be generative of the Cube, they may be dimensionally structural to it, and they may be clues given to us to follow on our path toward elevation. Probably, they are all three.

### To Seek Out Meaning

I have always taken umbrage with people who have said that the doubled words *Darosh Darash* (??? ???) mark the midpoint in the Torah. They actually mark the midpoint in the **91** doubled words in the Torah, forming a crosshairs if you will in the Torah. These special words found at Leviticus 10:16, mean to search out in a more intense way, to seek higher guidance, to inquire or investigate deeply by drilling down and questioning. That is what we have been doing in this series since its inception and every time we do, we reach a door to another ever deeper level, each level being an expansion on the previous one. The number **91** represents a unification in the Name of G-d and also is a triangular number, the **13<sup>th</sup>**. The ordinal value of *Darosh Darash* (??? ???) is **45** and **45**, which by the design of the Creator also represents the **45** doubled words before and the **45** doubled words in the Torah after this pair, a crosshairs. The value **45** is also a Triangular number, meaning it is the sum of all the positive integers that came before it. It is the **9<sup>th</sup>** Triangular number.

As we have seen throughout, Triangular numbers play an important role in the Torah's schematics so it behooves us to pay closer attention to them wherever they come up. In the greater universe numbers do not exist in a vacuum and we must consider the counterspace between them, their counterparts. In the case of triangular numbers, these would be the integers between them.

**1.3..6...10....15.....21.....28.....36.....45.....55...**

**.2 . 4,5 . 7,8,9 . 11,12,13,14 . 16,17,18,19,20 . 22,23,24,25,26,27 . 29,30,31,32,33,34,35 .  
37,38,39,40,41,42,43,44 . 46,47,48,49,50,51,52,53,54.**

These set of integers between the Triangular numbers have cumulative values too and the set of all the counter triangular numbers up to a particular triangular number has a value as well. The number (amount) of individual values in such a set would be equal to the preceding triangular numbers (i.e. there are **36** counter Triangular numbers up to the Triangular number **45**). As it happens those **36** counter space Triangular numbers total **870**, as in the **11** even ordinal value numbers of the *Alef-bet*, as analyzed in the earliest chapters of this series.

---

## [אגהזטכמספקש][בדוחילנעצרת]

[870] [ 625]

While the cumulative Triangular numbers through **36** is **120**, the age of man, the cumulative counter space Triangular numbers through **36** is **546**, the sum of the initials of the *sefirot* of the Tree-of-life. Moreover, the equation of the cumulative counter space Triangular numbers through **36** over the cumulative Triangular numbers through **36** =  $546/120 = 4.55$ , as in the value (**455**) of the 3 aspects of *Ehyeh* (????), representing *Binah*.

That same equation when applied to the **10<sup>th</sup>** triangular number, **55**, gives us  $1320/220 = 6$ , as in *Zeir Anpin*. There is more to be gleaned in analyzing the Triangular numbers and their counter space counterparts, but we will only point out that the sum of the counterparts through **21**, the **6<sup>th</sup>** Triangular number is **175**, Abraham's age, and the sum of the counter space numbers between **21** and **28**, the **7<sup>th</sup>** Triangular number is **147**, Jacob's age.

Returning to *Darosh Darash* (??? ???) we further see that their small gematria is **423 423**, as in  $\Phi(?)^3$ ; the ratio (**.423**) of the *Bereshit* portion of the *Bereshit-Shema* Triplet axis, **11/26**; and with the *kolel* of 1, **424**, *Moshiach Ben David*.

There is another connection between the duality of *Darosh Darash* (??? ???) and the triangular numbers and we touched upon it earlier in this series. Each of the two words has a numerical value of **504**, or **1008** conjoined, and the first **8** triangular numbers when multiple together give us  $(1 \times 3 \times 6 \times 10 \times 15 \times 21 \times 28 \times 36) = 1008$ . While this is **110** less than the *Shema's* **1118** numerical value, it is also  $1/10^{\text{th}}$  the diameters of the Earth and Moon together  $(7920 + 2160) = 10080$  miles.

Each *Darosh* (???) is equivalent to **504**, which equals  $(12 \times 42)$ , yes **12** times **42**, so both of them, or **1008** =  $(24 \times 42)$ , possibly reflective of the **12** hours of a clock and the **24** hours in a day. Therefore  $(1 \times 3 \times 6 \times 10 \times 15 \times 21 \times 28 \times 36) = 24 \times 42$ . And the sums of the diameters of the Earth and Moon together, **10080** miles =  $240 \times 42$ , with **240,000** miles being the distance from the Earth to the Moon.

The Earth and Moon diameters = **10080** minutes = exactly **7** days, and the sum of the Earth and Moon radii, **5040** miles =  $7!$  or  $(7 \times 6 \times 5 \times 4 \times 3 \times 2 \times 1)$ . This is also  $120 \times 42$  and **50400** is the **112<sup>th</sup>** even Pronic number, as in the **112** Triplets. It was Moshe who recently reminded me of the Pronic numbers we covered when discussing how they tied into the Exodus from Egypt.

While we can view Triangular numbers and factorials as expansions, but we can also view them as concentrations, means of focusing multiple levels or fields of numbers into a single point.

## The Structure of Focus

The **6** faces of the Essential Cube of Creation represent *Zeir Anpin*, the Divine Man. Early in our study about the Cube, we unfolded it in many forms, yet no matter how we unfold it, the **6** sides will be flat and their total numerical value will be  $(6 \times 126) = 756$ , and the central *Nun*(?) will be



---

hovering above it. The spelled out value of the *Nun*(?) is likewise **756**, equal to all **6** sides combined. Like above so is below. Infinite above, infinite below, just within limits, boundaries.

Why boundaries? If experimental development were not limited to bubbles than it would have to be part of the universal infinity where every time-path begins with true Creation and extends endlessly. In that case, the removal of unwanted development or entities would be infinitely more challenging and thus extremely inefficient.

Back to the boundaries of *Zeir Anpin*, where the product of the digits in **756** is  $(7 \times 5 \times 6) = 210$ . By now, we have already collectively realized that the height of the Pyramid is **210** cubits and its base is **756** ft. The **870** from the *Alef-bet* split above is an odd pronic number ( $29 \times 30$ ), and so too is **756** ( $27 \times 28$ ). It is the **27<sup>th</sup>** pronic number, quite fitting for the central place in the Essential Cube of **27**. Moreover,  $(27 + 28) = 55$ , equal to **2** cubits of **27.5"** each, and the Pyramid entrance height of **55'**.

## Sukkot

In a reference to the holiday of Sukkot, please note that during the **7** days of *Sukkot* while in the *Sukkah* we are drawing directly from the *Binah* hyperspace, and over those **7** days we are making **210** shakings, aligned in **5** sets of shakings in the **6** directions of the cube per day (**5 x 6 x 7**). Then since there are **3** components to each of the **6** directions, an expansion of each into **3** dimensions, there are **630** shakings over the **7** days, broken up into **5** sets of **6** directions each day. This is significant because the **3** expansions of the *YHVH* (????) contains **3** *YHVH* (????) or Fronts of the Name, totaling **78**, one Name for each level, and the resultant Backs of the Name total **630**. By performing the shakings properly during the holiday, we are filling in the Name *YHVH* (????) for the Creator, who has gifted us the Fronts during that cosmic window.

Concealed within the **30** letters, corresponding to the **5** sets of **6** shakings, in the **630** total Back of the Name, are the **6** letters *Dalet* (?) and one *Tav* (?), as in the **6-1** structure of complete *Zeir Anpin*. These *Dalets* (?) and *Tav* (?) total **424**, as in *Moshiach Ben David*. Moreover, the ordinal value of (??) is **26**, as in the Name *YHVH* (????), representing *Zeir Anpin*.

## Joseph, the Pyramid and the Titans

The pyramid stands as a reminder of our slavery, though the Torah says nothing about the Israelites building it as slaves. The Torah only speaks of our ancestors baking bricks, which were not utilized in the Pyramid by any stretch of the imagination. Did Joseph design and commission the Pyramid as a marker so that the exile in Egypt would end precisely **210** years later. Would anyone else have understood the technology embedded in it, or known the technology of how to build it? If he did not build it, and had it existed at the time of the Tower, almost 500 years earlier he still would have known the how and why of that technology.

“My spirit will not continue to judge man forever, since he is nothing but flesh. His days shall be **120** years.” This was written about the time of the Titans, when we were warned they would live on. The **5** final letters of this verse sum to **2015** with the *kolel*, as in the year **5775** HC and as in the exact height of the Pyramid in inches, **5775"**. Moreover, **5775** divided by the age of man (**120**) is **48.125**, representing the **481.25** ft exact height of the Pyramid. Furthermore, the same **756** ft base of the Pyramid in cubits is **330** cu and,  $(330 - 210) = 120$ . The connection to this

verse and time period is pretty obvious, as is the connection for is today.

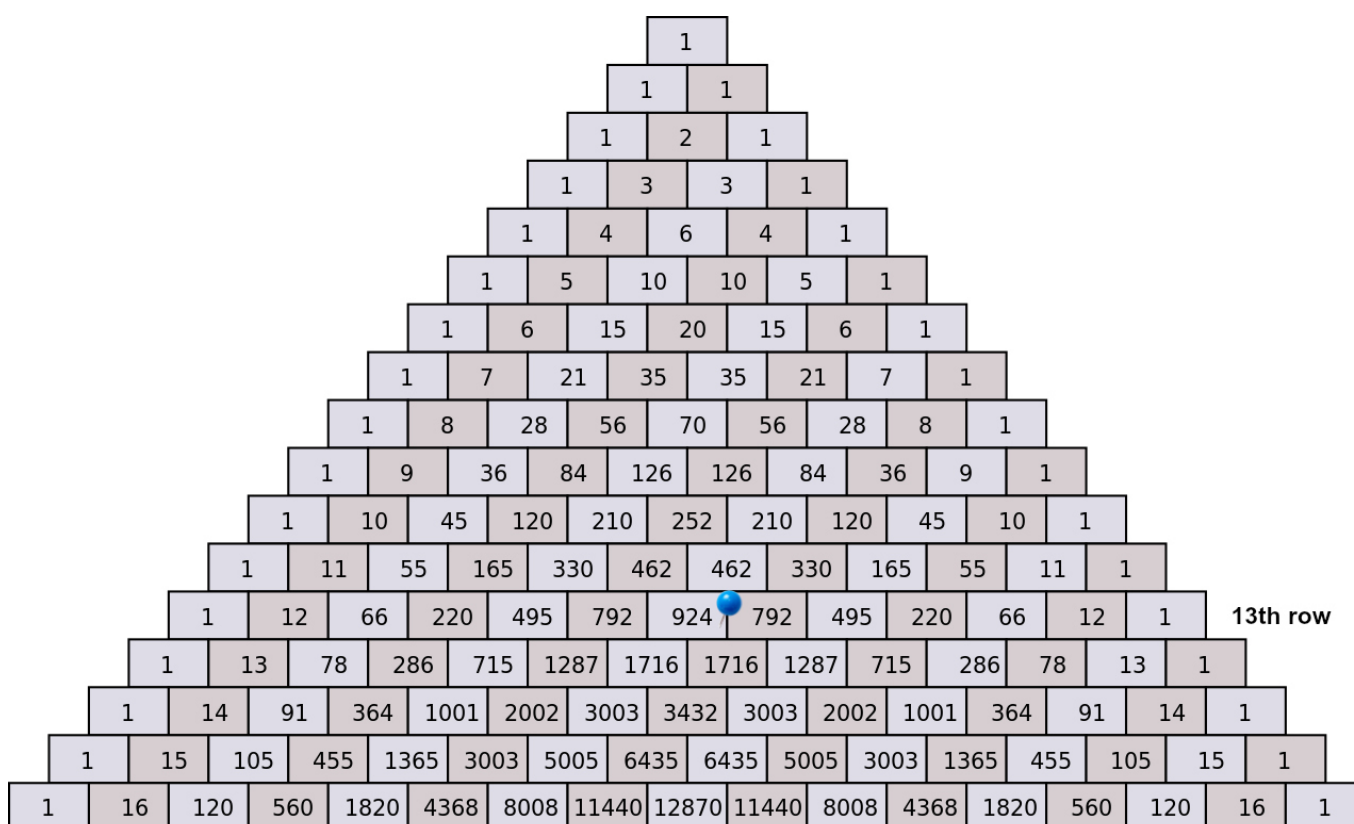
It is extremely important to note that this design is only possible because there are **12**” in a foot.

At the time of the Tower, God destroyed neither the Tower or the city; He dispersed the people and gave them **70** different languages so they could not communicate as one. At the time Joseph met Pharaoh we are told Joseph spoke all **70** languages. Thanks to technology, the Titans once again walk on the earth, towering above man, and we can once again speak one language. In fact, it appears they want us to have only one opinion as well.

### Another Pyramid Altogether

This line of thinking about the Pyramids led to Joseph’s dreams. Why were we presented these dreams? Joseph had **2**. His fellow prisoners had **2** and Pharaoh had **2**, which he recited to Joseph. Dream interpretation has always been important to Kabbalists, yet Joseph was the only one in the Torah to have dreams revolving around him. Jacob’s was a vision. Anomalies in the Torah are there to draw our attention. They are places to dig, not just fodder for artwork.

Joseph was one of **12** brothers. One of Tesla’s visions was of numbers as a living clock in a endless circle of **12**, a vortex in cycles of **12**. Pascal envisioned numbers interactively but in a different format, as a cascade of events.



It was Peter who brought it up that so many of our Torah and Pyramid numbers are found in Pascal’s Triangle, which at first glance is amazing, but what is Pascal’s Triangle? As you must know by now, we have a predilection to look at things, especially numbers, differently. So Let us turn Pascal’s triangle clockwise onto its edge, or better yet counterclockwise, the effect is the

---

same either way, just one works right to left and the other left to right, Hebrew and Western.

The first row is all Ones (1,1,1,1,1,1,1...) because everything that follows must begin with One (1), figuratively and mathematically. The next row is the sequential set of all positive integers, or natural numbers (1,2,3,4,5...). Thinking of higher-level mathematics and how we have seen it operate repeatedly throughout the Torah, the next row is the set of all Triangular Numbers (1, 1+2, 1+2+3... or 1, 3, 6...). Then row by row, we get the cumulative sum of the previous rows, so for the 4<sup>th</sup> row we get the set of the cumulative Triangular Numbers (1, 1+3, 1+3+6... or 1, 4, 10...). The 5<sup>th</sup> row in turn is the set of the cumulative sums of those cumulative Triangular Numbers (1,1+4,1+4+10... or 1, 5, 15...), and so forth, row after row, infinitely. Those of the 4<sup>th</sup> row are called Tetrahedral numbers by mathematicians and the subsequent rows as simplices, 5-simplex, 6-simplex etc. We will refer to them as orders, 4<sup>th</sup>, 5<sup>th</sup>, 6<sup>th</sup> etc.

1	1	1	1	1	1	1	1	1	1
1	2	3	4	5	6	7	8	9	
1	3	6	10	15	21	28	36	45	
1	4	10	20	35	56	84	120	165	
1	5	15	35	70	126	210	330	495	

It is quite beautiful.

It is just a list a subordinate sequences caused by a simple algorithm that happens to be a key higher-level operation: the repetitive stacking of the integer fields.

This is why, as Peter suggested, so many of the important resultant Torah and Pyramid numbers, including numerous ones built into the Torah's first verse, are in Pascal's Triangle. It is because his triangle reflects the source of so many of our numbers. Bully for him for presenting this list of beautiful and power-packed subordinate sets in such an eloquent way that gave rise to so many other Number Theory findings. Pascal's work is very impressive.

Of course, all integers are found in his Triangle, but we can ignore the 2<sup>nd</sup> row, which is the set of all positive integers, or alternatively the set of all ordinal positions of the integers. This last definition is key to the application of the inherent algorithm.

For us, we can now look at our Pyramid numbers in a new manner. Instead of an elegant looking Pyramid, we have a matrix.

1	1	1	1	1	1	1	1	1	1
1	2	3	4	5	6	7	8	9	10
1	3	6	10	15	21	28	36	45	<b>55</b>
1	4	10	20	<b>35</b>	56	84	<b>120</b>	<b>165</b>	220

---

1 5 15 **35** 70 126 **210 330** 495 715

1 6 21 56 126 252 462 792 1287 2002

1 7 28 84 **210** 462 924 1716 3003 5005

1 8 36 **120 330** 792 1716 3432 6435 11440

1 9 45 **165** 495 ...

We can also see why it was crucial to get the measure of the cubit accurately. It was the simplest possible one; nevertheless, man is still trying to come up with creative alternatives that may have a purpose in the grand scheme of things, but not in higher-level mathematical origins. The height of the Pyramid (**210** cubits) is now **5<sup>th</sup>** row, **7<sup>th</sup>** column or  $(I_{5,7})$  and the base (**330** cubits) is  $(I_{5,8})$  in the matrix of all cumulative sums.

Notice the succession of the **5<sup>th</sup>** order: **35, 70, 126, 210, 330**. The Pyramid height, **210** cubits, is also a **5<sup>th</sup>** order cumulative sum in the lineage or Rank of **7**. Likewise, the Pyramid base, **330** cubits, is a **5<sup>th</sup>** order cumulative sum in the lineage or Rank of **8**. Conversely, they are both in the Rank (lineage) of **5** as **7<sup>th</sup>** and **8<sup>th</sup>** order cumulative sums. The **330** cubits are the cumulative sum of the cumulative sum of the cumulative sum of the cumulative sum of the cumulative sum of cumulative sum of the integers from 1 – **5**. The Pyramid's height, **210** cubits, is too, just with one less cumulative. The number of words, letters, and verses in the Torah is **5<sup>8</sup>**. The Pyramid's base, **330**, is **5** to the **8<sup>th</sup>** Rank. Perhaps now, the skeptics can see the Creator's hand in both designs.

The value **165**, as in the **165** cubits to the scored line in the center of the indented slight v-shaped base of each of the **4** sides of the Pyramid is yet another accumulation of cumulative sums, **9** Ranks deep in the Order of **4**.

While **126** is not a Pyramid number, it is the sum of each plane of the Essential Cube of Creation, and for the first time we can see it as a derivation of **5**, just like the Torah and Pyramid, as illustrated above. It, the **5<sup>th</sup>** Element Essential of Creation is also a derivation of **6**, the **5<sup>th</sup>** Rank of the Order of **6**, as in the **6** faces of the Cube that each total **126**. Not only it this fitting as a junction between **5** and **6** or *Hei(?)* and *Vav(?)*, but as we saw above **126** was **1/6** of **756**, another key Pyramid number.

What we can now visualize as a matrix in hyperspace is a vortex that continually draws in the energy at each integer. We can call it accretion. That referential energy is cumulative and infinite, yet we can stop and examine it at any point. The point of origin of each is One(**1**). The vortex corresponding to the **4<sup>th</sup>** integer grows 1 + 3 + 6 + 10... then keeps growing 1 + 4 + 10 + 20... then 1 + 5 + 15 + 35 then 1 + 6 + 21 + 56. At any point we can slice this expansion, for example the **4<sup>th</sup>** order is the set (4, 10, 20, 35, 56...). We can focus in at any point given by its coordinates (Order, Rank). Keep in mind that what is really going on is the summation of subfields, all occupying virtually the same space (1 + 1,1,1 + 1,1,1,1,1,1 + null, 1...), for the **3<sup>rd</sup>** order.

The set of Torah numbers sometimes overlap the set of Pyramid numbers. The repetitive core



Torah numbers are more numerous than the Pyramid numbers since they do not represent a single solid geometric shape like the Pyramid and because they have millions of variables. Because of this, some of the resultant Torah numbers appear in the matrix, but since they do not come up as frequently, we have not emboldened them. For example, **462** is (**2 x 231**) the number of Gates (forward and reverse) of the **22** letters of the *Alef-bet* yet we do not consider it a core number.

There are, though, not nearly as many cumulative numbers as we might think. Excluding the integer row from our calculations for obvious reasons, there are only **64** cumulative numbers through the number **1000**. Dynamically, there are only **10** through the number **55**, and only **26** through the number **210**, leaving exactly **55** of them starting from the number **55** through **1000** or  $10^3$ .

I do not have to remind you that the sum of the integers from 1 – **10** is **55** and that **55** is the **10<sup>th</sup>** Fibonacci number, or that entrance height of the Pyramid is **55'**. Nevertheless, of those **64**, or **8<sup>2</sup>**, cumulative numbers **42** of them are Triangular (**3<sup>rd</sup>** order) Numbers, leaving **22** as complex cumulative numbers, as in the **22** letters, or fields, of the *Alef-bet*. Nor do we need reminding that the central position in the Essential Cube of Creation has a complete value of **64**.

Is it possible each one of these **22** letters has an assigned complex cumulative number? What a great cipher! Of course, they would be complex; they represent special fields and even the simplest looking letter has multiple forms in its shape. The *Alef*(?) has a value of **20**, and the *Tav*(?) **969**, just like the age of Methuselah, the oldest man in the Torah and the *Vav*(?) has a value of **126**, like each of the **6** faces of the Cube.

The sum of those **22** complex cumulative numbers is **8876**, which is **267** less than the sum of the **72** Triplets, **9143**, and **267** is the apothem of the Pyramid in cubits, which we will be discussing shortly. The apothem of the Pyramid is measured along that **165-165** score line from the base of the Pyramid to its peak.

1	1	1	1	1	1	1	1	1	1
1	2	3	4	5	6	7	8	9	10
1	3	<b>6</b>	<b>10</b>	<b>15</b>	<b>21</b>	<b>28</b>	<b>36</b>	<b>45</b>	<b>55</b>
1	4	<b>10</b>	<b>20</b>	35	<b>56</b>	<b>84</b>	<b>120</b>	<b>165</b>	220
1	5	<b>15</b>	35	<b>70</b>	<b>126</b>	<b>210</b>	<b>330</b>	495	715
1	6	<b>21</b>	<b>56</b>	<b>126</b>	252	462	792	1287	2002
1	7	<b>28</b>	<b>84</b>	<b>210</b>	462	<b>924</b>	1716	<b>3003</b>	5005
1	8	<b>36</b>	<b>120</b>	<b>330</b>	792	1716	3432	6435	11440

1 13 91 455 1820 6188

This brings up the 13<sup>th</sup> row (1 13 91 455 1820...) that sequentially represents One; One/Love; the unification (????????); the 3 levels of the higher Name *Ehyeh* (???) and the number of *YHVHs* (???) in the Torah, which is (20 x 91). This is the accretion or cumulation of love, of One. And what is the infinite fraction of One(1)

$$\phi = 1 + \frac{1}{1 + \frac{1}{1 + \frac{1}{1 + \frac{1}{1 + \frac{1}{\dots}}}}}$$

This is the infinite accretion or cumulation of One (1). It is Phi(?), or 1.6180339887..., hinted at in the 6<sup>th</sup> Rank of Order 13 (One), 6188.

And what is 14, the central position of the Essential Cube or Creation and the magnetic center of our Spherical Time Bubble? It is the cumulation of One(1) with One (13, *echad*), or 14. The 1<sup>st</sup> Rank and the 2<sup>nd</sup> Rank of Order One (13, *echad*) make 14, just as in the infinite series of 1 and 2 = 1.41421...

1	1	1	1	1	1	1	1	1	1
1	2	3	4	5	6	7	8	9	10
1	3	6	10	15	21	28	36	45	55
1	4	10	20	35	56	84	120	165	220
1	5	15	35	70	126	210	330	495	715
1	6	21	56	126	252	462	792	1287	2002
1	7	28	84	210	462	924	1716	3003	5005

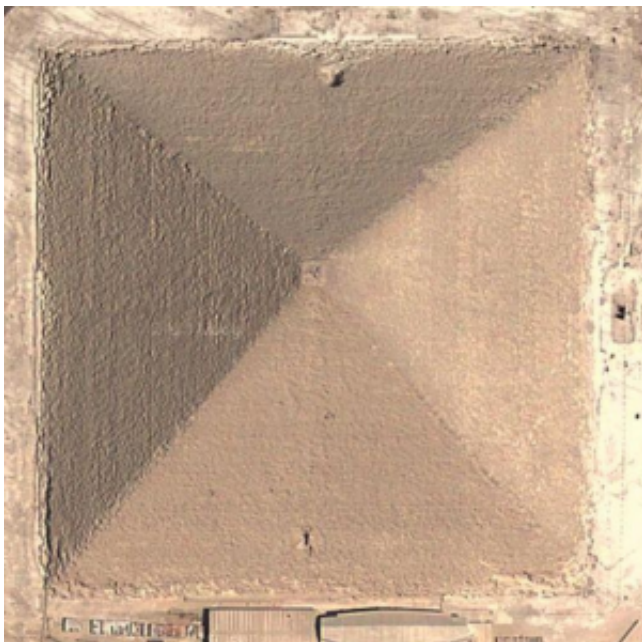
---

1 8 **36 120 330** 792 1716 3432 6435 11440

1 13 91 455 1820 6188

Now, any number that can be comprised of two Pascal Matrix Numbers is really comprised of multiple sums of cumulative integers anchored in One(1), making them powerful aggregate numbers, and there are infinitely many of them. Some sequential numbers, though, add up to powerful Torah numbers as well, such as  $I_{3,10}$  and  $I_{4,10}$  or **55** and **220** that give us the cubit (**275**), or  $I_{8,3}$  and  $I_{8,4}$  or **36** and **120** that give us Joseph (**156**) and kiddy corner to that are  $I_{7,4}$  and  $I_{8,4}$  or **84** and **120** that give us *Zadik*, as in *Joseph H'Zadik*. As **204**, they also give us the complete value of Joseph's name.

### The Apothem and the Patriarchs



We just covered connections to the Pyramid's Apothem, **267** cubits, which is **612** feet, or as will become important shortly more accurately **611.8** feet. As simply **612'** it is equivalent to the Hebrew word for covenant, *Brit*, that we find written into the central row of the **42**-Letter Name (??????). As **267** cubits we also find it as the sum of the initials of the **72** Triplets, **2672**. Nevertheless, thanks to questions in the comments I was led to consider Joseph, the **4<sup>th</sup>** Patriarch, and *The Divine Calendar*. I realized that the sum of the ages of the **4** Patriarchs ( $175 + 180 + 147 + 110$ ) = **612** and that Isaac' age and Joseph's age together, ( $180 + 110$ ) = **290**, the value of the most central (??) letter pair at the center of the **42**-Letter Name.

I was also reminded that the sum of the ages of all **26** generations of Adam was exactly **12600**, as in the value (**126**) of each of the planes of the Essential Cube of Creation, and that the sum

---

of their **26** logarithms was precisely **66.6612**.

Then considering the **4** Patriarchs with their respective ages and the *kolel* we get  $(248 + 208 + 182 + 156) + (175 + 180 + 147 + 110) + 8 = 1414$ , the square root of **2**, as per the infinite series above. This is where the **8** comes in again, beginning with the **248** dimensions in the **E8** Lattice. Perhaps it is just coincidence that the sum of the digits in  $(248 + 208 + 182 + 156) + (175 + 180 + 147 + 110) + 8$  is **91**. And perhaps not, considering that the product of the digits in Abraham (**2** x **4** x **8**) is **64** and the sum is **14**, as in the central position in the all-important Essential Cube of Creation.

We could add the **612** for *Brit*, Covenant, to  $(248 + 208 + 182 + 156) + (175 + 180 + 147 + 110)$  and get **2018**, but why would we? I mean, beside the dating of G-d's Covenant with Abraham in **2018** HC. And besides the major role **2018** plays in our spherical time bubble.

Now remember, these **26** generations from Adam through Moses that obviously were meant to synch with the design of the universe and the Essential Cube of Creation through their total of **300** x **42**, are also a marker of time, **2488** years to be precise, the date Moses passed away, **1273** years before **3760** CE, the other major time component in our spherical time bubble. This is all the more relevant considering **1.273** is the universal harmonic built into the Torah, the Triplets, the solar system, and the basic geometry of the circle and the square. The **110** years of Joseph traces the perimeter of a square whose sides are **1** cubit each, **27.5"** like the opening of the Ark and the 10 Commandments. As we will see this figure is far from arbitrary.

## The Shema Connection

The Torah delineated time frame, **2488** years, also works out to **1118** + **1370** = **2488**, with **1118** being the value of the **4<sup>th</sup>** Essential Element, the *Shema*, and **1370** being the fine structure constant and a connection to both the **42**-Letter Name and the end of Islamic rule over Israel.

We already know that the **15** Triplets of the **4<sup>th</sup>** Essential Element equal **1118** and that they are concealed within the first verse of the *Shema*, whose numerical value is **1118**. In a private discussion with Moshe about the *Shema*, we realized that the **3** sections of the Torah that contain the **1000** letters of the *Shema* breaks down to 205, 508, and 287, giving us the resulting equation  $(30,000 - (205 \times 508 \times 287)) / (205 + 508 + 287) = 111.82$  or **1118/10**. Therefore, the **1000** letters of the *Shema* sieved through an ancient gematria cipher (P/S) equate to the value of the special first verse (**1118**), which are actually the first **25** letters of the first section's **205** letters.

It is interesting that that leaves  $(205 - 25) = 180$  letters for the first paragraph of the *Shema*, the **42**-word paragraph, considering that **205** was the age of Abraham's father, Terach and **180** is the age of his son, Isaac. Time plays a role throughout the Torah. Together, the 3 generations represent the **19<sup>th</sup>**, **20<sup>th</sup>** and **21<sup>st</sup>** generations in the lineage of Adam. What does this remind us of?

The **3** verses of Exodus **14:19**, **20** and **21** that form the **72** Triplets of the **2<sup>nd</sup>** Essential Element of Creation. Moreover, while chapter **14** references the central position of the Essential Cube of Creation, the sum of  $(19 + 20 + 21) = 60$  references the **1833** *Samechs* of numerical value **60** at the center of the **14** Triplets of the **42**-Letter Name. This occurs between the **21<sup>st</sup>** and **22<sup>nd</sup>**



---

letters (??) of the 1<sup>st</sup> Essential Element of Creation. Moreover, that 14<sup>th</sup> chapter of Exodus is the 64<sup>th</sup> chapter overall, further establishing its connection to the central position (14-50-64) of the Essential Cube of Creation.

It is easy to get lost in the numbers, but we are trying to put together pieces of a puzzle and what links them together are the numbers, active agents that attract us and attract these disparate units together.

Nonetheless, if we were to add to that equation the age of Nachor, Terach's father, and the 18<sup>th</sup> in the lineage of Adam, we would get  $(148 + 205 + 180 + 175) = 708$  for their collective 4 ages. This resultant 708 is not only in sync with their corresponding ordinal sequence  $(18 + 19 + 20 + 21) = 78$ , but more important is the numerical value (708) of the Upper 42 Letters of the Name of G-d concealed within the *Shema's* first verse. Those 3 iterations, or 42 Letters, of the Name represent 14 of the 15 Triplets and 708 is the value of the final 5 words of the 6 word first verse of the Shema. These 5 words that total 708 define the year 5708 HC when Israel became a nation 72 years ago, 70 years before the USA moved its embassy to Jerusalem in 5778.

Shem, Noach's son, was Abraham's teacher. He was born 8 years before the flood, lived 600 years, and died in 2158 HC, 290 years before the Exodus from Egypt and the reception of the Torah at Sinai in 2448 HC. As it happens 290 is the numerical value of the letters (??) at the center of the 42-Letter Name and 40 or 42 years before the birth of Joseph. Time and the Triplets are intertwined. The Torah is laying out key markers in time, indicating specific layers of the onion in Spherical time.

The Torah was designed so that two of the Essential Elements of Creation would be concealed within the first 42 letters of the Torah, one of which, the 11 Triplets, come from the first 33 of those 42 letters, whose numerical value is 3003. A third Essential Element of Creation was concealed within 3 consecutive verses of 72 letters each in Exodus. The final Essential Element is found concealed in the conjoining of 3 separate paragraphs within the final two Books of Moses. These paragraphs were purposely placed and arranged where they were so that *Devarim 6:4*, would align with the "64" central position of the Essential Cube of Creation and *Devarim 11* and *Bamidbar 15* would align with the axis of the 11 Triplets and the 15 Triplets. The 3 positions where the 3 paragraphs are found in the Torah by #, Books, Chapters, Verses totals 3, 14, 32, 54. These coordinates should need no additional explaining by now.

That was the easy part, the Creator then made the total number of letters in those 3 paragraphs to equal exactly 1000, or a cube of  $10^3$ . One thing all the Essential Elements of Creation have in common is that they are all supposed to be followed by the silent 24 letters of the *Baruch Shem*. As Moshe noticed, when the 24 letters are added to the 1000 letters of the *Shema*, we get 1024, as in the 1024 or  $2^{10}$  word values in the Torah.

And now we see with the equation  $(30,000 - (205 \times 508 \times 287)) / (205 + 508 + 287) = 111.82$  that the major pieces of those 1000 words, like the first verse of 1118; the 42 words of the first paragraph; and the 72 words of the last paragraph were designed to yield 111.8, a fusion of *Alef*(111) with the 8 and exactly  $1/10^{\text{th}}$  of the 1118 first verse, one of the 5 Essential Element of Creation.

We have previously discussed much more of the technology embedded in the *Shema* and have

---

really just scratched the surface, but of additional interest to us now is that the Creator further designed those **3** paragraphs so that the sums of their **3** sets of letters and words would be **253**, **630** and **359** respectively and so that the sums of the cube roots of those **3** would be **22.00....**, the significance of which will become readily apparent, besides the obvious connections to the **22** letters in the *alef-bet* and the sum of the integers or ordinal values from 1-**22** being **253**.

One last note to avoid confusion: when the **6** words of the *Baruch Shem* are added, the total number of words in the *Shema* is **248**, as in the **248** dimensions of the E8 Lattice and so much more. Those special **6** words have a numerical value of **1358**, or **1000** (*Binah*) and **358**, *Moshiach*, which is also **240** more than **1118**.

### The Fine Structure Constant

As for the **1370** component in the  $(1118 + 1370) = 2488$  equation, we note that two of the **26** generations in the lineage of Adam lived for **137** years (Amran and Levi) and that Ishmael, Abraham's son did as well, which curiously helps define the outer courtyard dimensions (**312** cu x **317** cu) of the Future Holy Temple in that  $(137 + 175) = 312$  and  $(137 + 180) = 317$ , representing the addition of Abraham's and Isaac's ages respectively to Ishmael's.

It just dawned on me that **2488** also represents  $(2600 - 112)$ , as in the **112** Triplets that comprise the **4** Essential Elements of Creation. If each of the **26** generations were exactly **100** years in length on average, it would space out **2600** years, not **2488**. Is this yet another clue that the **112** Triplets have something do with time?

Nevertheless, let us get back to the number **137** and the **1370** years that the Ishmaelites were to rule over Israel (**10** x **137**). As illustrated earlier in this series, the total number of words, letters, verses, rows, and columns in the Torah =  $248 \times 10^3 \text{ Phi}(?) = 401273$  and the total number of words, letters, and verses in the Torah =  $5^8 = 390,625$ , while the difference between these two totals is  $(401273 - 390625) = 22^3$  and  $22^3 = 10,648$ . Then applying the same ancient gematria cipher, or indeed modern Number Theory used above, we get a result of **6480** that seems to bring together the **216** letters of the **72** Triplets with the **42**-Letter Name:

---


$$\frac{4 \times 1 \times 2 \times 7 \times 3 \times 3 \times 9 \times 6 \times 2 \times 5}{4 + 0 + 1 + 2 + 7 + 3 + 3 + 9 + 0 + 6 + 2 + 5} = \frac{272160}{42} = 6480$$

$$6480 = 64.80 \times 100$$

$$401,273 - 390,625 = 22^3$$

$$22^3 = 10,648$$

$$\frac{4 \times 1 \times 2 \times 7 \times 3 \times 3 \times 9 \times 6 \times 2 \times 5}{4 + 0 + 1 + 2 + 7 + 3 + 3 + 9 + 0 + 6 + 2 + 5} = 6480 = 10 \times 648$$

As previously explained, before Isaac was born, Abraham had a son with Hagar, Sarah's handmaiden. They were eventually cast out, but Ishmael was also blessed to become a great nation and was the precursor to all the Arabs. Ishmael lived **137** years. With the fall of Cyprus, all the Mid-east was subdued by the Arabs in **648** CE, which corresponds to **4408** HC and to **28** A.H. in the Islamic Calendar.

The year, **4408** HC is exactly **1000** years after **3408** HC, when the Second Temple was built, and adding the **1370** prophesied in the Zohar we get **5778** HC, or alternatively adding it to **648** CE date gives us **2018** CE, with **2018** HC being the year of the Covenant with Abraham.

The Zohar prophesied that the Arabs would reign over the Israelites for **1370**, ten for every one of Ishmael's **137** years because of his repentance before he died. On December 6, 2017, President Donald J. Trump announced the United States recognition of Jerusalem as the capital of Israel and ordered the relocation of the U.S. Embassy in Israel from Tel Aviv to Jerusalem. That was the **18** of Kislev, **5778**. It was opened on May **14**, **2018** at **14 David** Flusser Street. It was *parsha Bamidbar*, the one that splits the Torah into the Phi proportion.

As for the **42**-Letter Name, the 1<sup>st</sup> Essential Element, it has a numerical value of **3701** and the square root of **1370 = 37.01...**, which is its small gematria value, **173** backwards and is reflective of the Fine Structure constant, **1/137.0**.

The Fine Structure constant, **1/137.03599** is equal to **.007297353...** and while the entire 2<sup>nd</sup> line (??????) of the **42**-Letter Name matrix has a numerical value of **729**, and the following line (??????) permutes to **314** (???) and **73**, it begins with **53** (??) as in **.007297353**. Moreover, on the 2<sup>nd</sup> line, the 4<sup>th</sup> Triplet (???) in the Name has a numerical value of **359**, as in **1/137.03599**, and as in the sum of the letters and words in the 3<sup>rd</sup> paragraph of the Shema, its 4<sup>th</sup> section. The fine structure constant is interesting as it is a combination of four other fundamental constants, or as we know them, fields—the speed of light, the charge of the electron, Planck's constant, and the permittivity of free space—and it is stable over time, meaning it is independent



---

יהו-היו

דהי-וי

היי-ודו

יוד-לתה

ייו-דוי

וי-דוי

והי-יוד

Most significantly, what we find is that the value of the two triplets that comprise the horizontal crosshairs (???????) is **455**, the value of the **3** levels of the higher Name *Ehyeh* (????) at the level of *Binah*. It should be noted that these two Triplets are actual Triplets of the **15** Triplets of the *Shema* and thus of the **112** Triplets, not a grouping of letters that happened to be in the middle. Another concept to keep in mind is that every time we isolate the **2** central triplets, be it in the **72** Names, the **42**-Letter Name, or the *Shema*/Upper **42** Letters, we are splitting the **112** Triplets into **2** and **110** Triplets. In this case the 2 Triplets = **455**.

אלף-הי-יוד-הי  
אלף-הה-יוד-הה  
אלף-הא-יוד-הא

This is a key point: The central position of the Essential Cube of Creation is **14** (??) and *YD*(??) spelled out *Yud-Dalet* (???????) has a numerical value of 454, or **455** with the *kolel*, helping to explain the connection occurring in that central cube within the Cube. It also resonates the central focal point of the Upper **42**-Letter Name with the full expansion of the higher Name *Ehyeh* (????) and the central cube within the Cube. A most powerful concentration, unification and/or emanation, depending on the perspective.

The Zohar tells us that *Zeir Anpin* is where the revealed universe begins and *Atika Kadisha* is the level of true endless where nothing is revealed, no beginning and no end. *Atika Kadisha* is called He (???) of numerical value **12**. While the word (???) most often means “that” and not “he” in the Torah, it is found there **455** times for a value of **5460** or (**10 x 546**), representing the tree of life. The word (???) while translated to English as “He” does not mean he as it refers to *Atika Kadisha*, a specific Name for *Hashem*, because at this level there is no male/female or

---

any division or separation of any sort. All is One. This is a reminder of how high up we are connecting with this expanded Name.

יהו-היו

דה-יו

הי-ודו

יוד-לתה

יין-דוי

וין-דוי

וה-יוד

And referring to One, the sum of the sums of all the numbers through **13** (*Echad*), meaning One, is **455**, as discussed above about Pascal's triangle. We should review a few equations that we covered long ago because the sum of the values in the vertical crosshairs above the central pair (??) total **77**, as in the sum of the integers 1 – **77** found in the **3<sup>rd</sup>** Essential Element, the **11** Triplets of *Bereshit*. All the Essential Elements are integrally connected; they exist as a unit.

The Arizal explains that the number **77** is representative of *Mazal(???)*, as is also the number **8**, which relates to *Binah* and with the **8<sup>th</sup>** of the **13** Attributes of G-d. The **11** Triplets of Creation are comprised of **33** letters divided into **8** words. We may surmise that that **11** Triplets of Creation are connected to the *Mazal(???)* in our universe that flows from *Binah* in **3** iterations of **11** steps (*sefirot*) each. If one chooses to use them to connect to that flow, please remove your agenda beforehand and recite the *Baruch Shem* silently afterwards.

Please note that  $14/3.3 = 4.242424\dots$ . In other words, the central core of the Essential Cube (**14**) of Creation divided by the **33** Letters of Creation leads us back to **42** and to *Moshiach Ben David*. Since **14** is also the value of gold you could tie this back to *mazal* and the flow of *shefa* (the force of fortune).



---


$$33 \text{ Letters} = 3003 = \sum (1 - 77) = 91 \times 33$$

$$91 = (\text{יהוה}) + (\text{אדנא})$$

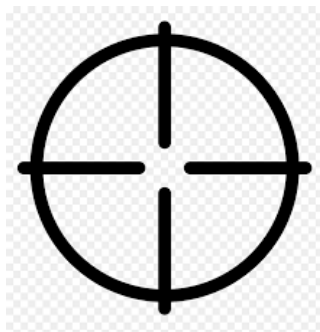
$$\sum (1 - 13) = 91 = (7 \times 13)$$

$$5 \times 91 = 455$$

$$\sum \left| \sum_{i=1}^{n \rightarrow 13} (1 - n) \right| = 455 = (\text{היהוה})_3$$

$$13 = \text{Echad} (\text{אחד}) = 1$$

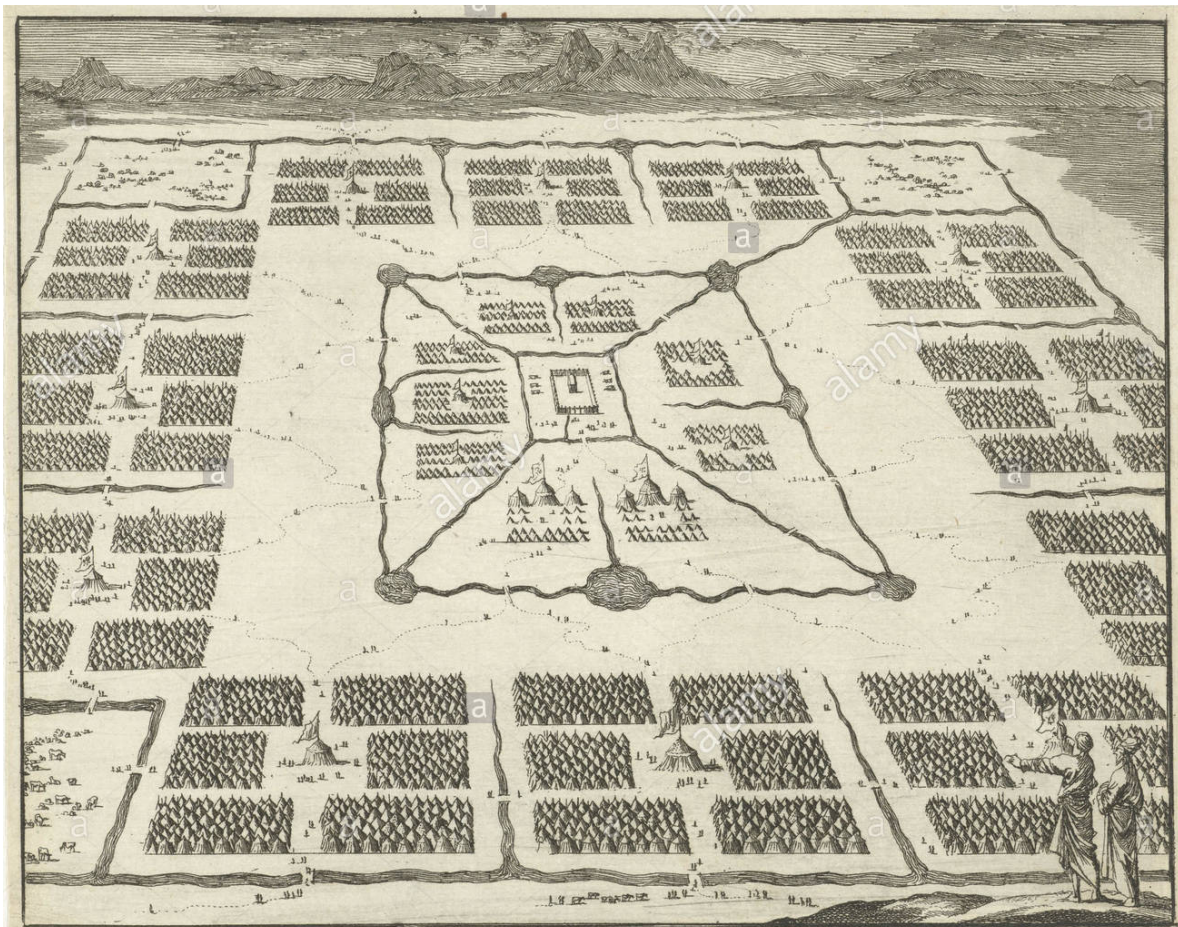
Previously, we discussed the value **60** of the letter *Samech* (?) and that there are **1833** letter *Samechs* (?) in the Torah and that the value of the **42**-Letter Name through its central midpoint is **1833**. That central midpoint is found right between the central letter pair (??) of the **42**-Letter Name. Does this hint to Isaiah **60** and redemption?



Interestingly, the sum of the vertical crosshairs above the central letter pair (??) has an ordinal value of **64**, just as does the sum of the vertical crosshairs below the central pair, **64**, which besides being **8<sup>2</sup>** is the complete value of the central position of the Essential Cube of Creation. It is as if by focusing on the center of the **42**-Letter Name we are focusing in on the center of the center of the Essential Cube of Creation. The vertical and horizontal letters surrounding the central pair (??) sum to  $(64 + 64 + 414) = \mathbf{542}$ .



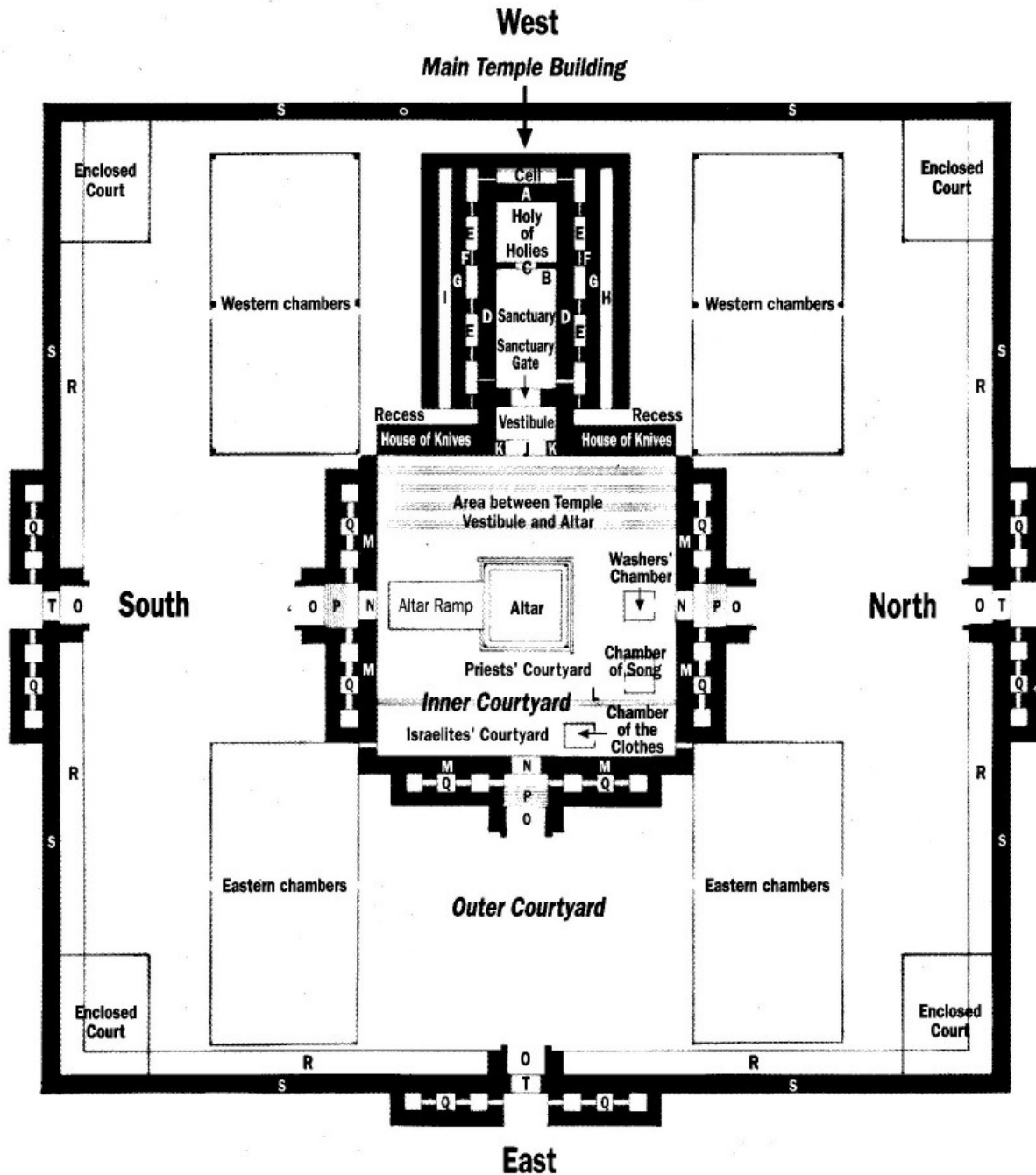
Why are we creating crosshairs out of the 4 Essential Elements of Creation? We have already discerned the layout of the 4 Essential Elements around the central 5<sup>th</sup> Element, the Essential Cube of Creation, based on the arrangement of the Tribes and the *Mishkan* and the design of the Holy Temple. They mimic the 4 directions surrounding the central cube, but to exert an effect upon spherical time we need to do more than lay them out, we need to focus them as narrow beams.



alamy stock photo

EDRC6J  
www.alamy.com

# Plan of the Third Temple



## Key:

- |  |                                |
|--|--------------------------------|
| A: Back wall of Holy of Holies         | K: Vestibule Wall              |
| B: Wall of Holy of Holies              | L: Platform and Duchan         |
| C: Entrance to Holy of Holie           | M: Inner Courtyard Wall        |
| D: Sanctuary wall                      | N: Inner Courtyard Gate        |
| E: Cells at the sides of the Sanctuary | O: Vestibule of the Gate       |
| F: Cell wall                           | P: Eight steps                 |
| G: Exterior wall of cells              | Q: Cells by the gate           |
| H: Winding staircase                   | R: Elevated paved gallery      |
| I: Rainwater spout                     | S: Wall of the Outer Courtyard |
| J: Vestibule Entrance                  | T: Gate of the Outer Courtyard |

---

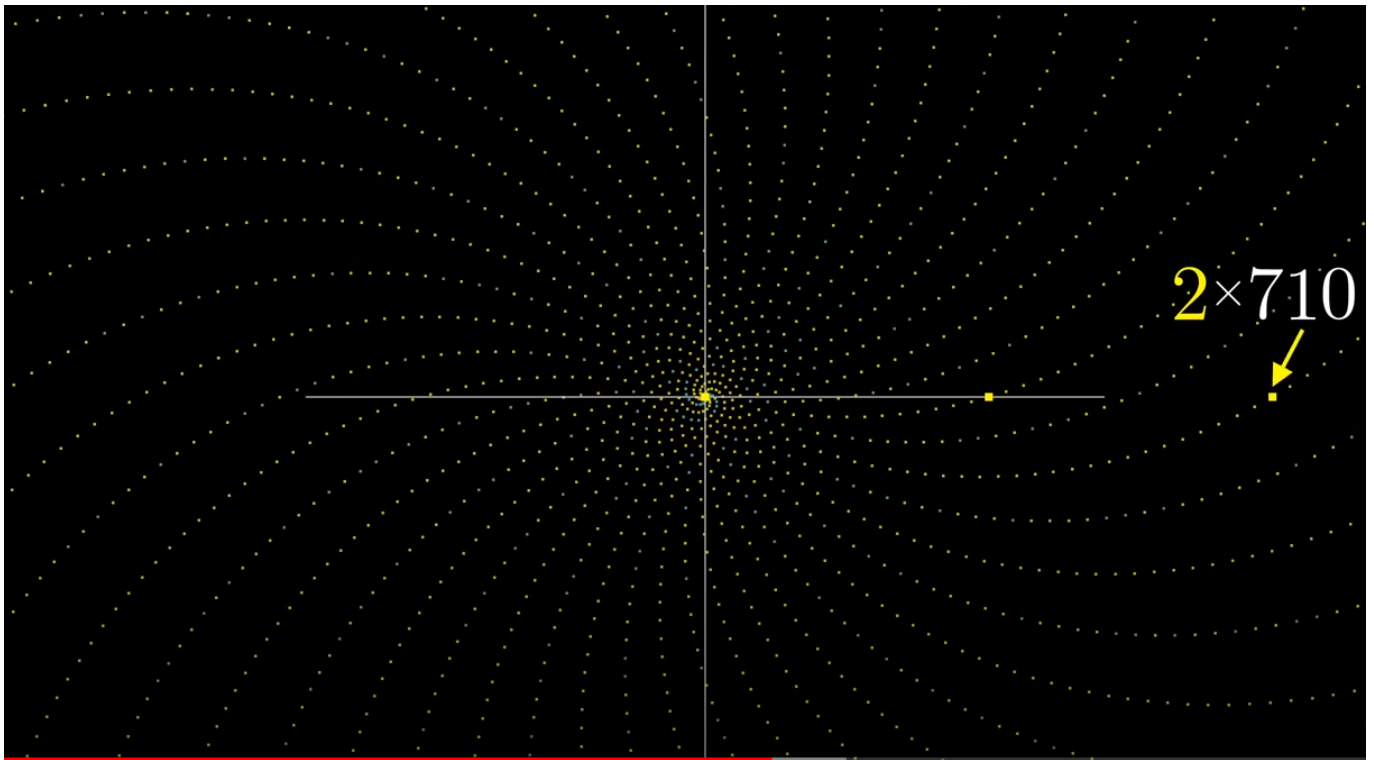
The thought process behind this came from a combination of Moshe's, Glen's and Yitzchak's comments that led me to view Joseph's dreams where his brothers were all standing or bowing around him in a circle and Jacob said, "Do his father and mother bow before him too." This was odd to me because Leah was not Joseph's mother. Joseph had said it was the Sun and the Moon, which to me represented the small and big hands of a clock and the **12** brothers along with Dina as the hour marks. I pictured the bowing mother and father as the big hand and the little hand. Remember, we are talking about time, and what better way to represent it to us cryptically than as a clock. Ignoring the 12 constellations for now, we are going to pursue a deeper analogy.

Joseph's actual two (?) dreams concerned his **11** brothers bowing down, which is connected to the **11 sefirot**, and as we saw from the outset of this series, the splitting of the *Alef-bet* in two halves of **11** letters each. Considering that the surface temperature of the Sun is **5778** K, it might have something to do with the **11** year solar cycle, where its magnetic polarity flips ever **11** years, like clockwork.

## בְּרֵאשִׁית בָּרָא אֱלֹהִים אֶת הַשָּׁמַיִם וְאֶת הָאָרֶץ וְהָאָרֶץ

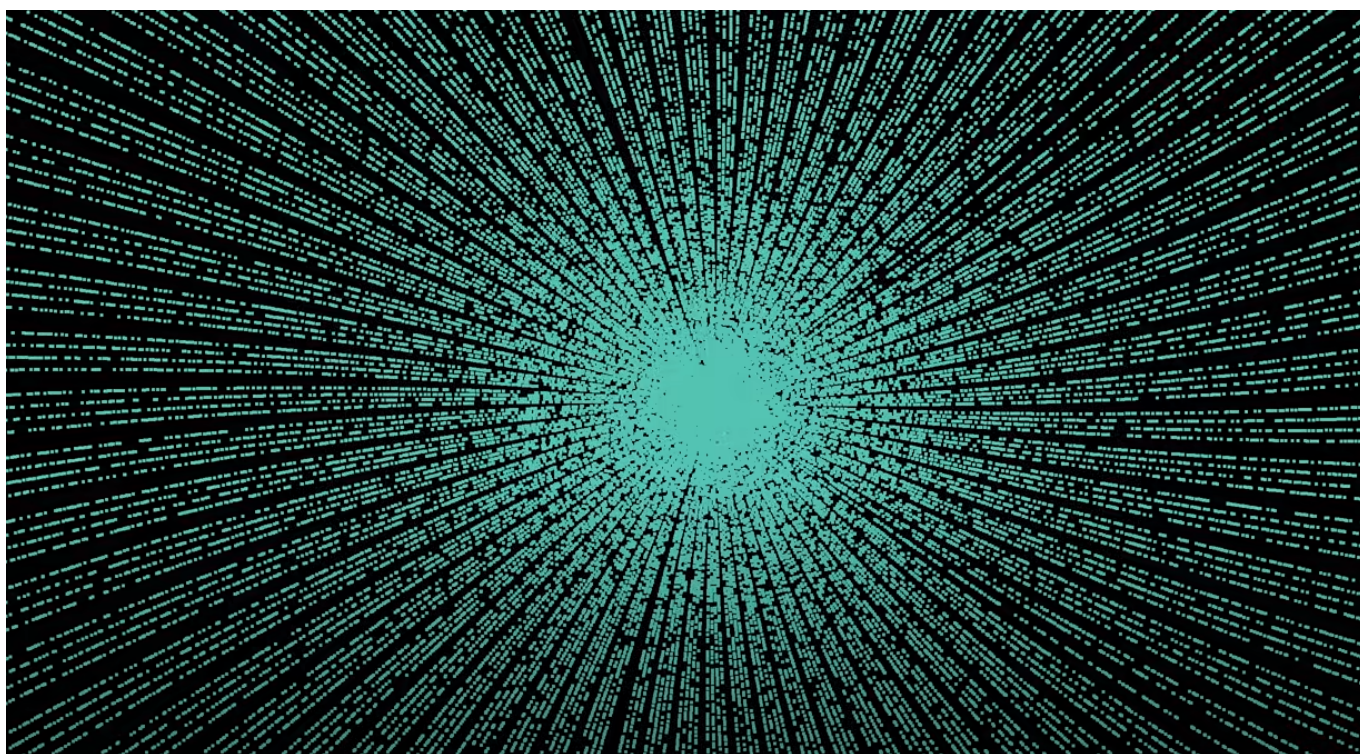
Joseph's actual two (?) dreams concerned his **11** brothers so let us examine the number, or the relationship of the concept of, **2** within the **11** Triplets, alternatively known as the first **8** words of the Torah. The verse starts off with a large *Bet* (?) of numerical value **2**. Then we get two parallel words (???) for "create" sandwiched around the word for **2** (???), as in **2** creations. The twin parallel words *ET V'ET* are another **2**, as are the twin parallel words *HERZ V'HERZ*, yet another **2**, along with the twin parallel concept heaven and earth, *H'ShMYM V'ET HERZ*, **2** again. Finally, there is the dual *Elohim* and the concealed *YHVH* (????), **2**, which numerically total **112**.

The word for two (**2**) embedded in the Torah's first word (???) has a numerical value of **710**, that is **710** out of **913** for the whole word, and not only is  $(710/913) = .778$ , but **710** is the number of radians that it takes to equal to an exact full turn of an axis. There are  $2\pi$  radians in every circle ( $360^\circ$ ) and **710** radians works out to **113.00000**.... In other words, pretty darn close to 1 whole number, **113** turns.



Something very interesting happens at this critical point. If we plot the prime numbers, as a subset of all positive whole numbers, around an axis using them as the X coordinate and using radians as the Y coordinate, then when we reach **710** radians, the prime numbers all line up as spokes around the central axes. That would be **280** spokes to be exact, typically in groups of **4**. There are actual mathematical reasons for this that have to do with **710/2 $\pi$**  rotations equally very nearly a whole number (113.00000959) and the residue class of mod **710** equaling a straight line, but all this is just an aside, one more example of higher mathematics possibly designed into the Torah. Do not forget that the word for **2** (???) of numerical value **710** permuted from the originally word (???) of small gematria **314**. It was a very sly way of embedding more of the beauty





The Zohar also speaks of the **2** words that begin with *Bet* (?) and the **2** words that begin with *Alef* (?), each pair representing *Binah* and *Malchut*, or **MB**. The same is true for the **91** doubled word pairs in the Torah that we spoke about earlier in the context of crosshairs: *Binah* and *Malchut*. And 42 Journeys that Israelites took from Egypt to Israel, began and ended with the prefixes (?) and (?), *Binah* and *Malchut*.

The Large *Bet* (?) that leads off the Torah, represents *Binah* of numerical value **1000**, and thus gives us a value of **2000**. When we then add the value **18** for the 3 *Vavs* (?) that constitute the latter *Bet* (?) to the **2000**, we get **2018**. We will soon see how both **2000** and **18** play into the design of the focused **4** Essential Elements, especially the **2** included in the (???) initials.

These hints are not only guiding us in deriving the spherical clock, but in defining Spherical Time as **2** parallel time periods superimposed. We will dive into this further in the next post.

Moshe saw that the initials of UFO (?????-?????-???) in Hebrew are (???) of numerical value **112**, which immediately led me to substitute the Sun and the Moon with the **42** (??)-Letter Name and the **72** (??) Triplets. I was not in search of **112** UFO's, or satellites as we have previously described them, but of answers of how to interact with Spherical Time. The Torah would not have provided guidance towards spherical time and the layout of the 5 Essential Elements without also providing us with clues to how to access it.

One interesting things about (???) is that it represents *Zeir Anpin* (**70**) – *Binah* – *Malchut*.

Together the **12** brothers and the father/mother, Sun/Moon, are **14**, which we know to be the ordinal value in the center of the Essential Cube. Calculating them as 11 brothers, 1 father, 1 mother and Joseph, we also get **14**. The message of **14** is found again in the two (?) dreams of Pharaoh interpreted by Joseph with the **7** fat and **7** lean years in each.



---

Now, another interesting thing about the (???) is that its P/S gematria is **50**, which corresponds to the letter value **50** at the central position of the Essential Cube of Creation, the **50** Gates of *Binah*, and the **50** cu height of the Gates of the Future Holy Temple. This further emphasizes its position in the center of the circle (clock). When we are in sync and cooperating, the clues may seemingly have nothing to do with each other and yet are all integral to the whole.

There are **120** words in the Torah that contain the letters (???) in order, as in the **120** years of the age of man. Most of those words are (?????) meaning slavery. The first time it is found is at *Bereshit* 9:25 in the curse of Canaan. Is the Torah drawing a relationship between the age of man and slavery? So, we must ask if we are indeed slaves? The answer must be of course we are. Escaping from this slavery is the prime directive of mankind. It was the fundamental motive behind the exodus from Egypt, and later on from the Babylonians, Greeks, and now Romans.

We are slaves to many things, and most fundamentally the clock, our construct of time.

Freedom has always been an illusion, but the solution is hidden in the word (?????) itself. The **42** (??)-Letter Name and the **72** (??) Triplets surrounding the hand, arm, pointer (??) of numerical value **14**, as in the arms of a clock. The word (??) is found exactly **28** times in the Torah and obviously  $(28 + 14) = 42$ . The *Sefer Yetzirah* draws our attention to the **28** times of Ecclesiastes(3:2-8), the **14** letters of the 3 Names in the *Shema's* first verse, the **28** lunar days, the **28** camps of the divine presence, and the **42**-Letter Name, and ties them all into the **12** constellations.

The triplet (???) as the initials of UFO in Hebrew probably means nothing, but as a triplet contained in the words for slavery repeated **120** times it may indeed be a code for the **4** branches of the *Alef*(?). Nevertheless, assuming the words for UFO were divinely inspired, then we can purport a sense of freedom to them. UFOs can come and go as they choose; we cannot. They can travel to the far off reaches of the universe; we are bound to the earth. Their existence is dependent on the whole universe; ours is on the Sun and the Moon. Some even posit that we are their slaves. For now, without any concrete proof one way or the other, let us call it a concept.

As refers to the branches of the *Alef*(?), there is the (??) of the **14** Triplets of the **42**-Letter Name explicitly written into the word for slavery; the (??) of the **15** Triplets of the *Shema*; and on the **3<sup>rd</sup>** branch, there is the (??) of the **11** Triplets of *Bereshit*. Altogether, these **3** branches sum to **40** (?), the age of maturation in the Torah, which is why the Arizal explains that the final *Mem*(?) represents the womb, and the human gestation period is **40** weeks. The final branch is the **72** (??) Triplets, completing the triplet acronym (???)

The complete value of the Hebrew nomenclature for the Triplets of the **3** upper branches is  $(40 + 40) = 80$ , connecting them to *Binah*, and that of the **4<sup>th</sup>** branch is  $(72 + 18) = 90$ , connecting it to King and water.

The schematic that the Torah provides through the two (?) dreams places Joseph, of numerical value **156**, in the very center. According to the Zohar, the juncture point of our world with the World to Come, the higher dimensions, is located in hyperspace directly above the Holy Temple in Jerusalem and is called Zion, also of numerical value **156**. This is indeed the center of our world and of spherical time.

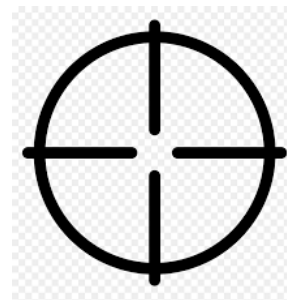
---

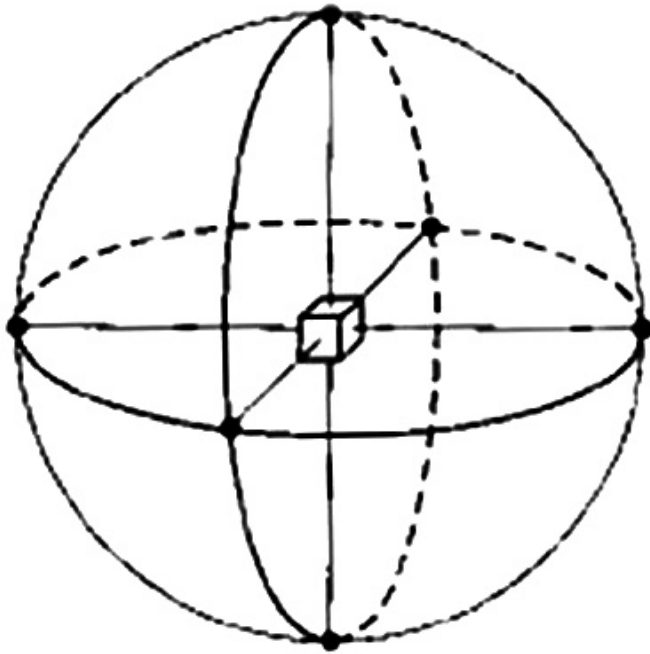
As we bring everything back to One(1) and as per the equations above involving the higher Name of G-d, *Ehyeh*, it is important to note that Joseph/Zion in the center of the clock gives us  $(156/12) = 13$ , *Echad*, One.



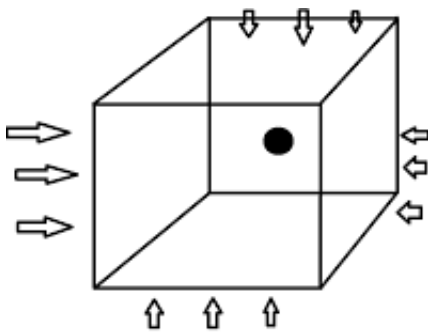
Thirty years ago, when I was researching graphic and mathematical commonalities in ancient cultures, I came upon a simple symbol common to nearly all of them, but it was not until recent dreams that I saw it as the alignment of the 5 Essential Elements of Creation and of the necessary crosshairs.

There is of course a system to this, and it must be done in 3 axes for the 3 dimensions of *Zeir Anpin* and the central Essential Cube.





### The Central Central Cube



The focus must be directed toward the center of that schematic, in the center of the cube:

This is where the **156** comes in, as it is **6 x 26**, the value of the *YHVH* (????).

A *YHVH* (????) must be placed virtually in all **6** directions of the inner cube. This is akin to the *kavanot* of the shakings of the *Lulov* (4 species) in **6** directions, according to the detailed instructions of the Arizal. The process of the cosmic crosshairs is extremely complicated, as is the *kavanot* of the full set of shakings, which are meant to integrate the expanded Name *Ehyeh* (????) and the *YHVH* (????) in **18** segments along **3** axes. As explained to me in a

---

study with the Rav on the eve of the last Presidential election these *kavanot* form two concentric rings (spheres) with the brackets that form the **3** axes between them. The basic shape of the Triplet crosshairs is very similar with the targeted *YHVH* (????) cube in the center and the usage of the expanded *Ehyeh* (????) to facilitate and elevate the connections.

Zion, of numerical value **156**, is the center. It is a **6** x *YHVH* (????) Cube or alternatively **26** x **6** directions (sides). Of the **1024**, or precisely  $2^{10}$ , different word values in the Torah there are exactly **6** that are found **26** separate times in the Torah, and the collective value of those **6** words is **3142**.

Previously, we mentioned that when we divide the total value of the **42**-Letter name by **506**, its first line, we get  $3701/506 = 7.31422$ , and that the Highest Name of G-d in the Torah, found at Exodus **3:14**, **I Am That I Am** (????????????), has the small gematria value of **3142**.

### I Am That I Am (????????????)

We also explained that the two most powerful Names, *Ehyeh* (????) and the *YHVH* (????), when expanded into **3** dimensions (iterations) together also equal **3142**.

אהיה

אל-ף-ה-י-י-וד-ה-י

אל-ף-ל-מ-ד-פ-א-ה-י-י-וד-י-וד-ו-י-ד-ל-ת-ה-י-י-וד

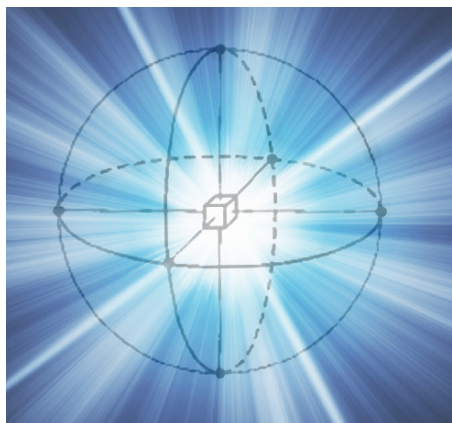
יהוה

יוד ה' ויו ה'

יוד ויו דלת ה' יוד ויו יוד ויו יוד ויו ה' יוד

The expansion to **3** levels is a kabbalistic tradition. It is a process that we should go through consciously and deliberately. There are reasons for each letter, each field, individually and collectively. We never say these Names or try to pronounce them.

The Torah has taken us from a clock with Joseph in the center, to *Zeir Anpin*, a cube bound by the *YHVH* (????) to powerful Names that elevate us to *Binah*, all directed at a single point, Zion.



The expanded components for the *Yud(?)*, the *He(?)* and the *Alef(?)* of the Name *Ehyeh (????)* are interesting **506**, **110**, and **1818** respectively. Altogether they equal **2434**. The component letters of the *YHVH (????)* are the *Yud(?)*, the *He(?)* and the *Vav(?)* and they are similarly interesting as  $(506 + 110 + 92) = 708$ . The year **5708** was when Israel became a nation. Together  $(2434 + 708) = 3142$ . The **110** is an obvious connection to Joseph and to miracles, *nes*, and is in each of the Names. The **110** was the total for the two expanded letters *He(?)* in each Name, the connection to the number **5** and **55** for each Name expanded to **110**.

Also repeated in both is the value **506** anchoring each of them to the **42**-Letter Name. All of these are critical components in the formula to harness Spherical Time.

Let take a moment to digest this. When we concentrate and/or recite the letters in these two expanded Names we should also focus on the **42**-Letter Name and the **110** component within of them, especially the knocking of the letters in the *YHVH (????)* that also gave us **110**.

Effectively, since we are taking about the *Yud(?)* and the *He(?)*, this focus is the **3** iteration expansion of the higher Name *YH (??)* for each Name. For both Names that totaled **3142** together, it is a focus on the triple expansion of *YHYH (????)*, an even higher Name. It is said that in the time of *Moshiach* when He and His Name are One. The Name *YHYH (????)* will reign.

**בְּיוֹם הַהוּא, יְהִיָּה יְהוָה אֶתְד. וְשִׁמוֹ אֶתְד**

Those two highlighted components in each expanded Name  $(506 + 110) = 616$ , the numerical value of *H'Torah*.

Therefore, as we set up this inner cube in our minds, we are accessing the greatest expansion possible. We are concentrating not on **6** boundaries but on **6** expansions through the  $(3 + 3)$  iterations.

Perhaps, since there are **3** *YHVH (????)* and **3** *Ehyeh (????)* included in this important expansion, whose **3** numerical values  $(78 + 63)$  total **141**, we can understand a higher purpose to **3.141**...in Pi, not to mention that **3.14159**... is also **3142**.

---

All 5 Essential Elements are involved, and the central **156** value, or Zion/Joseph point, is also quite reminiscent of the **155** value for the central triplets (???????) of the **72** Triplets 8 x 9 matrix.

These are the same central pair of the **72** Triplets (???????), which we previously noted had the same numerical value, **155**, as the sum of the atomic weights of the **3** metals prescribed for use in the *Mishkan* (Tabernacle): Copper (29); Silver (47); and Gold (79). When we add the central Triplets (???????) of the **72** Names to the central Triplets of the Upper **42** Letter Name (???????) we get a combined value of  $(155 + 455) = 610$ . This is equivalent to the **3<sup>rd</sup>** iteration of the same Upper **42** Letter Name. It is also the numerical value of *Etrog*, the 4<sup>th</sup> species used in the critical Sukkot unification. It is also the numerical value of *Etrog*, the 4<sup>th</sup> species used in the critical Sukkot unification. It is also the value of the **27<sup>th</sup>** of the **72** triplets.

יהוה

יהוה יהוה יהוה

יהוה יהוה דלת יהוה יהוה יהוה יהוה יהוה יהוה





והו	ילי	סיט	עלם	מהש	ללה	אכא	כהת
הזי	אלד	לאו	ההע	יזל	מבה	הרי	הקם
לאו	כלי	לוו	פהל	זלך	ייי	מלה	זזהו
נתה	האא	ירת	שאה	ריי	אום	לכב	ושר
יזו	להוז	כוק	מנד	אני	זעם	רהע	יין
ההה	מיכ	וול	ילה	סאל	ערי	עשל	מיה
והו	דני	הוזש	עמם	ננא	נית	מבה	פוי
נמם	ייל	הרוז	מצר	ומב	יהה	ענו	מוזי
דמב	מונק	איע	זזבו	ראה	יבמו	היי	מום

Another combination of the central focusing between the sets of Triplets occurs when we line up and superimpose the crosshairs of the **42-Letter Name** 6 x 7 matrix with the **72 Triplets** 8 x 9 matrix. The two central columns (4<sup>th</sup> and 5<sup>th</sup>) of the **72 Triplets** line up and overlap the two central columns (3<sup>rd</sup> and 4<sup>th</sup>) of letters of the **42-Letter Name** matrix. Thus overlaid, the **42** letters will line up with **42** of the **72** Names, leaving **30** Names (Triplets) symmetrically excluded.

As for the horizontal crossbar, the central 5<sup>th</sup> row of the **72 Triplets** will thus line up and overlap with the central 4<sup>th</sup> row of the **42-Letter Name**, giving us the superimposed central pairs of (??) and (??????), which sum to (290 + 155) or 445. If we then were to place Joseph or Zion in the center of the circle or sphere, we would get (445 + 156) = **601**.

The central Triplets (??????) of the **72 Triplets** permute to (??????) or *Yad- N- Amen*, representing the central position of the Essential Cube of Creation of ordinal value (14, ??) and of the letter (?) followed by the unification of *Amen* (???). These 36<sup>th</sup> and 37<sup>th</sup> Triplets, total **73** in placement value, as in the *sefira* of *Chochma* (73). Together with **155**, these 2 triplets have a complete value of (155 + 73) = **228**, the numerical value of *Baruch*, Blessed. The two central letters of the **42-Letter Name** on the other hand, are the 20<sup>th</sup> and 21<sup>st</sup> letters, as in the (20 + 21) = **41**, possibly representative of the **41** letters of the 3 iterations of the higher Name *Ehyeh*

---

(????) associated with *Binah*.

אהיה

אלף-הי-יוד-הי

אלף-למד-פא-הי-יוד-יוד-וי-דלת-הי-יוד

The association between the **41** letters of the **3** iterations of the higher Name *Ehyeh* (????) and the Name *Ehyeh* (????) is even more complex and profound as the number **455**, representing the **3** aspects of *Ehyeh* (????) is the **41<sup>st</sup>** cumulative number. This can only be understood in the realm of higher dimensional mathematics.

As for the superimposed central total of **601**, it is odd that the Torah specifically mentions that the Flood occurred in the **601<sup>st</sup>** year of Noach's life, especially given that the Hebrew word used for the Flood and translated as "cleaning, *mabul* (????)", begins with **42(??)**, includes the value **72 (???)** and also the Vav (?) representing the **6 YHVH (????)** that equal **156**. Its total gematria is **78**, as in the **3 YHVH (????)** Fronts of the expanded Name of **42**. Moreover, it has an ordinal value of **33** and thus a complete gematria of **111, Alef(???)**. An interesting word choice for sure.

Nonetheless, at digit #**601** in Pi we have the numeric string ...**2000**... and that from that point on till the end of the **1000** digits, the remaining digits sum to **1800**, a very possible reflection of the ordinal values (**20** and **18**) of the two letters (??) at the center of the **42**-Letter Name. There is no apparent reason for us to add **2000** and **1800** from a simple mathematical point of view, but given the full value of the **1000** digits of Pi as **4470**, we find that **(4470 – 3800) = 670**, the number of paragraphs in the Torah.

It is apropos here to discuss something Peter posted to the comments, regarding the composition of the **72** Triplets, which are composed of **3** consecutive verses of **72** letters each. As Peter illustrated, the first verse has a numerical value of **2672**, the middle one of **3043**, and the final one of **3428**, leaving a difference (**3428 – 2672**) between the first and final one of **756**, as in the **756** ft of the Pyramid and the **6** faces of the Cube. And yes, they give us sequentially **3, 42, 28, 26** and **72**). He further pointed out that the difference between each verse and the middle verse, left a central gap of **14** between them:  $(3428 - 3043) - (3043 - 2672) = 14$ . Obviously, if the total distance between them is **756**, the average distance between them must be **378**, as in the sum of the **27** ordinal values of the Cube; nonetheless, the sum of the digits in either pairing sums to  $(17 + 10) = 27$ . One other cosmic oddity is that  $(756 - 601) = 155$ , the **2** central Triplets of the **72** Names.

So, what could be the connection between the superimposed crosshairs and this **601** landing point in Pi? As it turns out, the sum of the **42**-Letter crosshairs (vertical and horizontal) is **1318** and that of the **72** Triplet crosshairs is **3118** with a difference between them of **1800**, whose square root is **42.426407...**

Both sets of crosshairs **1318** and **3118** are clearly reminiscent of the 3<sup>rd</sup> Essential Element, the *Shema*, **1118**. And in light of the numerical string at digit #**601** in Pi ...**2000**... it is notable that (**3118-1118**) = **2000**, and (**1318-1118**) = **200**, or together, **2200**. For what it is worth, **2200/27.5 = 80** cubits.

We are also reminded of the **3** iterations of *Alef*(?), and explanation from **1** to **1818**. Simply math shows us that (**3118 – 1818**) = **1300** and (**1818 – 1318**) = **500**.

The central Triplets of the (???????) of the **72** Triplets also spell out (???????) or “From Adonai.” One thing to note about Adonai (????) is that when it is squared (????????????) its total value is **125**, or **5<sup>3</sup>**, the same as the ordinal value in *Manzipach*, the **5** final letters in the *Alef-bet*. The ordinal value of the squared Adonai (????) is **54**, cycling back to the Cube.

### Crosshairs and Counterspace

There is space and counterspace. When we separate out the two sets of central crosshairs, the rest of the **42**-Letter Name and **72** Names sum to (**3701 + 9143**) – (**1318 + 3118**) = **8408**. This is the balancing counterspace. This is **2 x 4204**, which is twice *Moshiach Ben David* (**424**). When we mediate on this superimposition of these two particular crosshairs we must keep in mind that the force that surrounds them like an aura is that of *Moshiach Ben David*.



והו	ילי	סיט	עלם	מהש	ללה	אכא	כהת
הזי	אלד	לאו	ההע	יזל	מבה	הרי	הקם
לאו	כלי	ליו	פהל	זלך	ייו	מלה	זזהו
נתה	האא	ירת	שאה	ריי	אום	לכב	ושר
יזו	להוז	כוק	מנד	אני	זזעם	רהע	יין
ההה	מיכ	וול	ילה	סאל	ערי	עשל	מיה
והו	דני	הזש	עבם	ננא	נית	מבה	פוי
זבם	ייל	הרוז	מצר	ומב	יתה	ענו	מוזי
דמב	מנק	איע	זזבו	ראה	יכמו	היי	מום

It is also reminiscent of the (600,000 – 408) component letters in the Torah as noted above.

The sum of the digits in 1318 is 13 and likewise in 3118. One (Echad) and One (Echad) is 2, as in the 2000 from the 13 Attributes, *Notzer Chesed L'Alafim*. The sum of the 8 digits together is thus 26.

Considering the midpoints of all 4 Essential Elements of the 112 Triplets in terms of letters, we have (????????) whose sum is 306 and whose ordinal value is 54 for a complete value of 360, the circle.

With a bit of kabbalistic alchemy we can add the sum of the central coordinates of all 4 of the Essential Elements (??), (??), (??????), and (??) as in (290 + 705 + 155 + 20) = 1170 to the sum of the initials of the 72 Triplets (2672) and we get 3842, the exact value of the first 42 Letters of the Torah.

Balancing the other side of the alchemistic equation are the values of the initials of the 14 Triplets of the 42-Letter Name together with Joseph's age 110 to get 1170, which is, as we have just stated, the sum of the central coordinates of all 4 Essential Elements (??), (??), (??????), (??).

As it works out, there are 14 letters in these crosshair coordinates, connecting them to the central position of the 5<sup>th</sup> Essential Element. Moreover, the total complete gematria value of the



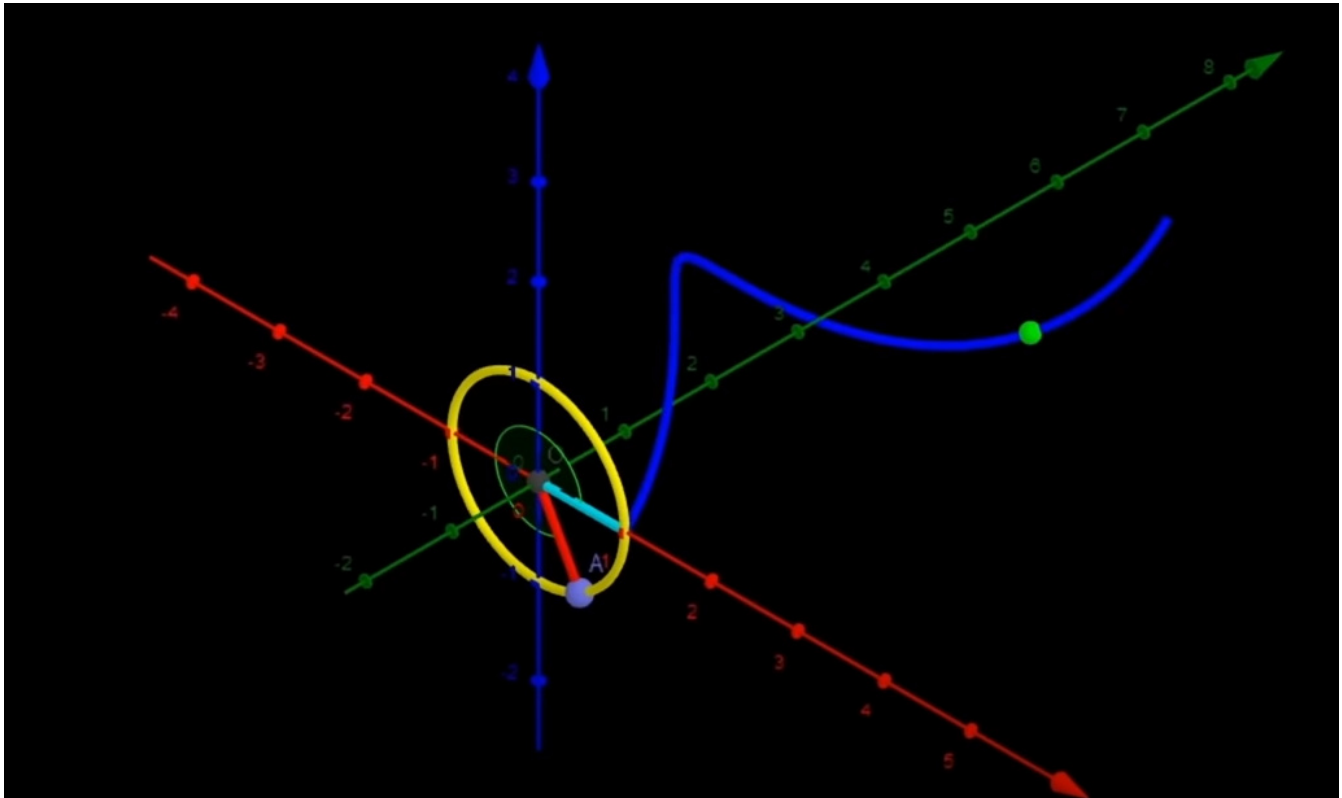
crosshair coordinates is  $(1170 + 162) = 1332 = 666 \times 2$ . This is because **1170** is also the sum of  $(504 + 666)$  and  $(666 - 504) = 162$ . At the moment, we are just digging up clues (*darash*), not deciphering them, but the story is becoming more compelling. Had the misstatement about the midpoint of the Torah not been repeated for so many generations, we may never have found this infinitely important clue right where it was supposed to be.

The value **110**, given as Joseph's age is not an arbitrary number. It is the **10<sup>th</sup>** pronic number. It is also the result of knocking together The *YH(??)* *HV(??)* and *VH(??)* of the *YHVH(????)*, in another words their products,  $(50 + 30 + 30) = 110$ . Moreover, as Peter has just reminded us, when Moshe Rabbeinu split the Red Sea, he not only used the Triplets but had Joseph's body by his side.



The number **110** is even more profound in its essence than that. While it is true that it appears on the vertical axis of the crosshairs of the **42-Letter Name** as the letter pair **(??)** of numerical value **110**, those same letters **(??)** are the back of the letter *Alef(???)*, the primordial letter, representing *Binah*.

*Alef(?)* is **1** and its back is **110**. These are also the 2 letters Abraham **(??)** assigned to the **1<sup>st</sup>** month, the month of *Tishrei*, to begin every calendar cycle. They also represent the 2 views of the tracing of the helix generated by the motion around a circle in 3-d against time. In other words, they represent the integration and simultaneous generation of the sine and cosine waves, but this and what it has to do with Spherical Time is for another day.



It is, though, central to our focusing on the center of the crosshairs within that circle. These letters, the back of *Alef* (???) and the value **110**, help us spiral into and bore downward.

Please note that the **162** (**3 x 54**) ordinal value of the **4** superimposed central coordinates also coincides with the **162** columns said to uphold the covered colonnade porches of the Outer Courtyard of the Second Holy Temple. We do not yet know how many would be utilized in the Future Holy Temple. Perhaps this is a hint. The number **162** is also (**3 x 6 x 9**) of Tesla fame, and of course, the rounding off of Phi (161.80...) by less than 2/1000.

If you recall, applying the gematria cipher (P/S) to the **2** sets of **390,625** and **401,273** elements of the Torah, we got **6480**. This can be further broken down to **40 x 162**, giving it additional significance. It is also the **80<sup>th</sup>** pronic number **80 x 81**.

$$\frac{4 \times 1 \times 2 \times 7 \times 3 \times 3 \times 9 \times 6 \times 2 \times 5}{4 + 0 + 1 + 2 + 7 + 3 + 3 + 9 + 0 + 6 + 2 + 5} = \frac{272160}{42} = 6480 = 80 \times 81$$

### The 7 Central Triplets of the 4 Essential Elements

With the cosmic window that we are opening or attempting to access, it is notable that the sum of the **7** Triplets at the center of each of the **4** sets of Essential Triplets is

(????????????????????????????????????): **(155 + 704 + 705 + 455) = 2019**, as in the year **2019** CE found triple times in the **1000** digits of Pi along with its counterpart string **5778** HC.



---

## God Reigns, God has Reigned, God will Reign Forever and Ever.

The famous line from our prayers *Adonai Melech, Adonai Malach, Adonai Ymloch Le'olam Va'ed* comes from Psalms 10 and 93 and Exodus 15:18, which is the last line in the prophetic Song of the Sea, paragraph 42. The numerical value of the phrase *Adonai Melech, Adonai Malach, Adonai Ymloch* is **358**, that of *Moshiach*. We bring this up here because the initials of the full verse total **156**, the same as Joseph and Zion, the focal point of our meditations. This verse is always recited twice with  $(2 \times 156) = 312$ , the length of the outer Courtyard of the Future Holy Temple currently at Zion. The ordinal value of the full verse is **275**, as in the measure of the cubit for the Future Holy Temple, while the **5 Lameds**, total **155**, and **210** in their complete value. We need to be grateful that we have been given so many wonderful tools. Our appreciation helps the connections/meditations.

### Psalm 67

The **8** verse Psalm **67** that is often portrayed in the shape of a menorah and used during the Counting of the Omer to count the **50** Gates, etc. has a first verse that is placed as flames above the menorah, often as 6 triplets and a central letter, 3 triplets on one side, 3 on the other. That letter is the letter *Nun(?)* with **3 x 3** on either side, just as we find it in the central letter position of the Essential **3<sup>3</sup>** Cube of Creation. The **7<sup>th</sup>** Hebrew letter *Zayin (?)*, when spelled out, has a value of **67**, hence the **7** branches of this menorah.

This is the same Psalm **67** menorah whose central position sums to **5778** and whose initials of the **7** branches equal **72**. Those same **7** initials have a complete gematria of  $(3 \times 42)$  or **126**, as in each of the faces and planes of the Cube. Moreover, the final letters of those **7** branches (verses) total **210**. The Menorah, as used to depict Psalm **67**, becomes an upside-down Pyramid with **210** and the letter (?) at the peak and the letter *Nun(?)* at the base with its spelled out value of **756**, just like the peak and base measures of the Pyramid. The base measure of **756** is also found in the final two triplets in Psalm **67**'s first verse (???????). While the letter (?) and the letter *Nun(?)* represent the top and bottom of the Menorah's central column, their combined value is **55**, as in **2** cubits, and as in the **55'** entrance to the Pyramid. Of further note, the first four letters(????) of that same central column spell out *Moshiach* (????).

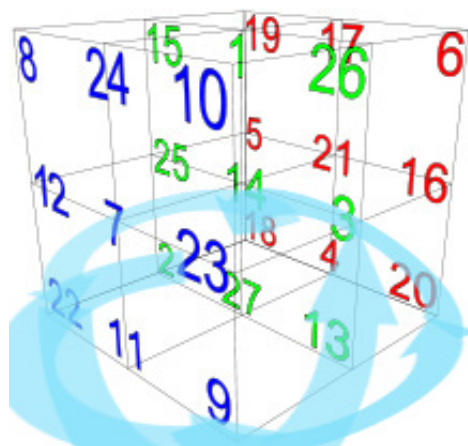
לְמִנְצַח בְּנִגְיֹת, מְזִמּוֹר שִׁיר



We are not saying to add any of these Triplets to Creation. They were written by David (14), who by name and life embodied the central position in the time-line of Creation. Of the 150 Psalms, he chose this one, riddled with clues, to be the 67<sup>th</sup>, as in the numerical value of *Binah*. Please note that the depiction of the Menorah here is not the same one utilized for counting the Omer. There are many variations.

**The Path**

The two Triplets (???????) in the central 4<sup>th</sup> line (???????) of the **42**-Letter Name matrix have a numerical value of **704**, that of the word Path (way, road) in Hebrew (???). One place we find this path conspicuously is in the bottom plane of the Essential Cube of Creation. Following the letters (or their ordinal values) in order counter-clockwise (2-9-20-18-22-3) takes us sequentially around the **4** lower corners of Cube and finally back to the middle opposite where it began.



The Path literally rings the bottom level of the Cube. And like the Torah, it begins with the letter *Bet*(?), which as the Zohar explains, stands for blessings.

This path is primordial. Both the Cube of **42** and the **42**-Letter Name matrix are primordial. The Path existed before the act of Creation so it must be vitally important. It is perpendicular to the Flow of the 10 *sefirot* that also existed before Creation. It is almost too perfect. Almost too perfect not to be followed by anyone seeking truth and elevation. It points upward. So, if we follow the Path sequentially upward, it encircles the Essential Cube of Creation **3** times and ends with the tip of **26**, at the tip of the *Yud*(?) of the *YHVH* (????).

Notice how the central elements (???????) of the Path are **20-18** and how the complete value of the Path is **704** plus its ordinal value (2+9+20+18+22+3) or **74** is **778**, the Hebrew calendar complement of **2018**.

We are beginning to understand another aspect of higher level (dimensional) mathematics: the ordinal values of conjoined letters are more than place markers; they elucidate pathways through hyperspace.

There is space and counterspace. There is the Path and what is skipped over. The value of the ordinal values skipped over (13-11-27-4) = **55**, as in **2 x 27.5** (the cubit), etc. It is also the Path of the *Vav*(?) gifted to us in the *Shema* (13-42-55). As you may recall there are **13** *Vavs*(?) in the first **42**-word paragraph of the *Shema*. Then **42**, as in the skipped values (11+27+4), in the rest of the *Shema*, making **55** in total, which was analogous to the extremely rare Bell Prime Indices (2, 3, 7, 13, 42, 55 and 2841). Perhaps it is just a coincidence that the Path starts with **2** and ends with **3**.

What is not a coincidence is that **55** *Vavs*(?) = **330**, which in turn is **12** cubits. Moreover, as the Path continues upward around the Cube, the **12** corners have an ordinal value of **168**, leaving **210** for the rest of the Cube. This is the important dynamic of the **5** Kings vs **4** Kings, or (5 x 42)

---

vs ( $4 \times 42$ ), as  $(210 + 168) = 378$ , the full ordinal value of the Cube. As a proportion **168** is  $\frac{4}{5}$  of **210** and  $\frac{210}{378}$  is **.555....**

As the Path ascends the next two levels, the only other numbers not included are the two bars of **42**: (7-14-21 and 24-1-17). The full counterspace for these **3** encirclings totals **2002** when converted to the corresponding Hebrew letters. The complete counterspace includes the central vertical plane and the ordinal value **13**. Is it just a coincidence that so many elevators skip the number **13**?

Oddly, **2002** was on Pascal's matrix, as rank 6 of the order of **10**, just as **55** was rank **3** of the order of **10**. What is particularly interesting about this order of **10** is that the sum of the 3<sup>rd</sup> and the 4<sup>th</sup> ranks equals  $(55 + 220)$  or **275**, which is also the sum of the complete **4** aspects of the *YHVH* (????) and similarly **10** times the cubit (**27.5**). Moreover, the sum of all the ranks 2 through 6 is **1000** or  $10^3$ , the same as the number of letters in the *Shema*, and the sum of all the ranks 1 through 7 is **3003**, the value of the **33** letters in the Essential Element, *Bereshit*.

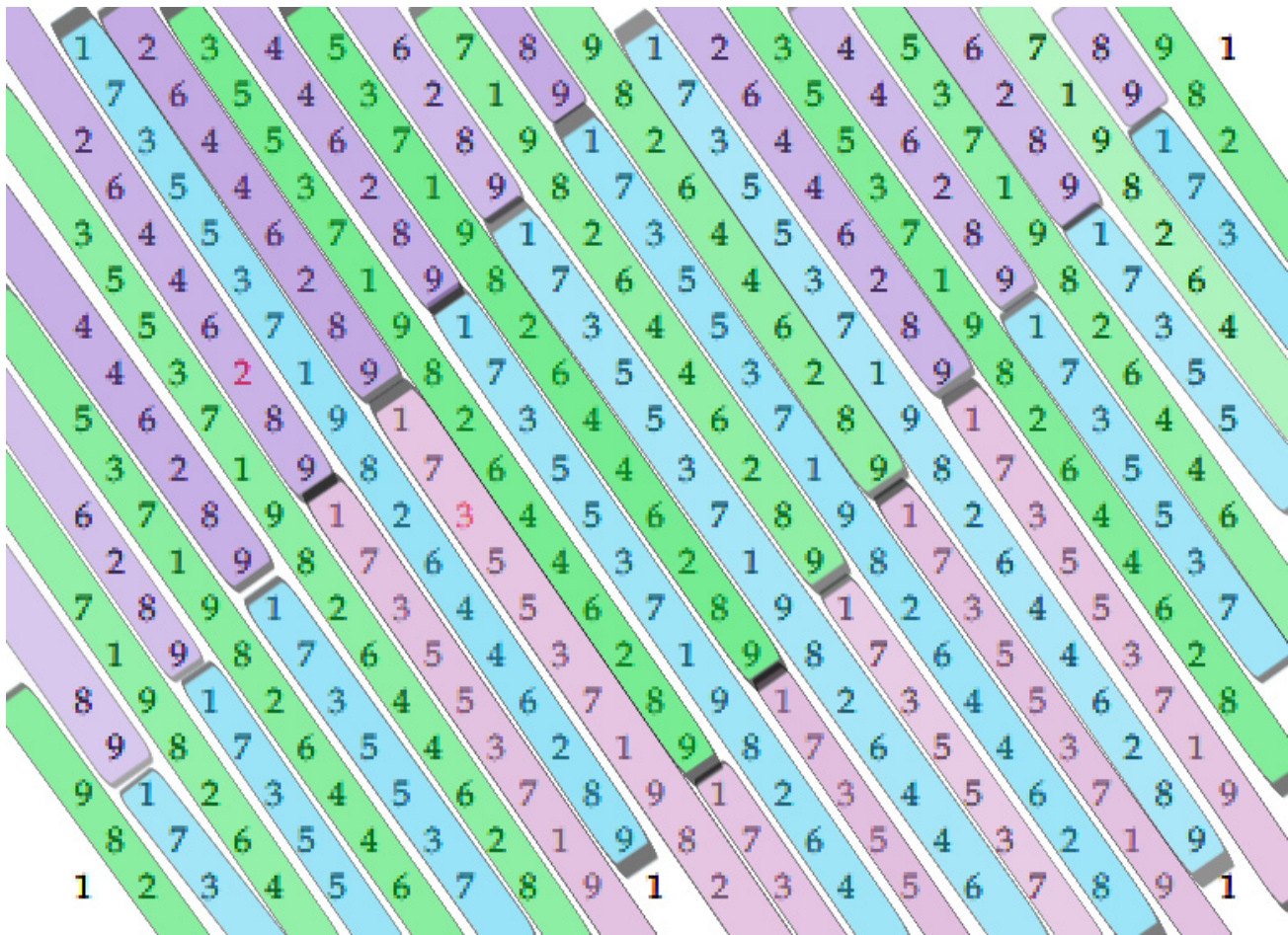
What we have not answered was why it was necessary for the Creator to embed the Path in the center of the **42**-Letter Name matrix.

No one has ever proposed this before, but since the Path forms a closed ring around the central core (1-14-27) of the Essential Cube, can the **42**-Letter Name matrix be circular in nature as well. If the Path were a pattern tracing all **42** Letters, the Name would be a cylinder. Using calculus, we can prove that the surface area of a cylinder equals the surface area of a sphere. Simply, a cylinder is a rectangle that can be divided into **4** equal triangles, and each of those triangles has the same area as a circle that represents the full shadow of the sphere. Given that the formula of the surface area of a sphere is  $4\pi r^2$ , it would equal the area of **4** equal circles of formula  $(\pi r^2)$ , which would consequently equal the area of those **4** equal triangles and thus the original cylinder.

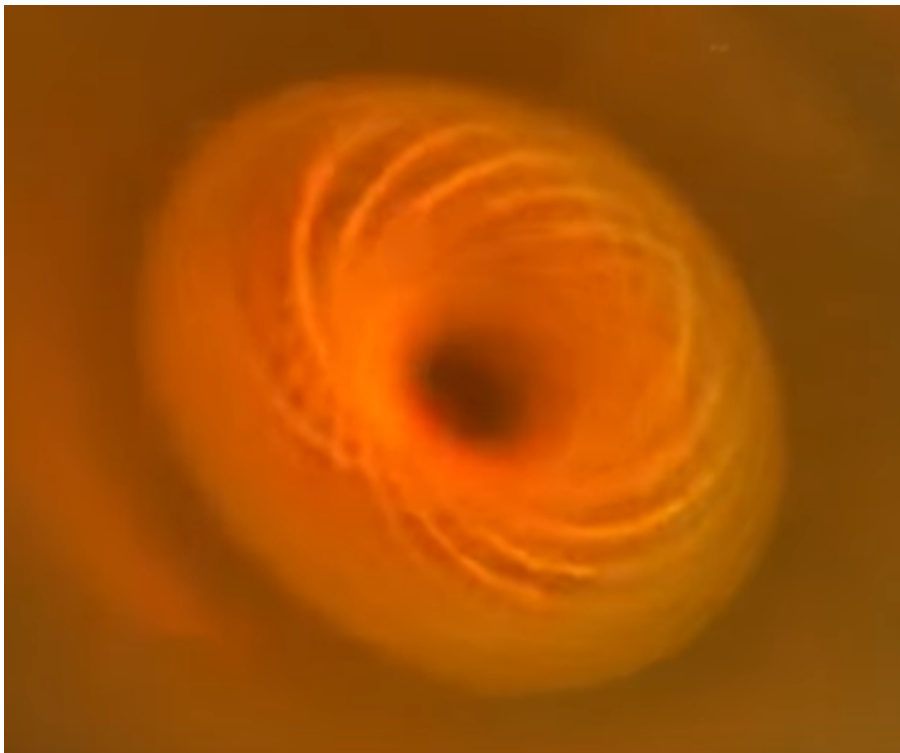
In other words, the **42**-Letter Name matrix can be a sphere. As difficult as that is to imagine, given our limited perspective, it makes perfect sense in hyperspace where there is no separation. May this help explain why **9** divided by the small gematria of the **42**-Letter Name equals **73.141593** or that the complete gematria *sofit* of the **42**-Letter Name ( $5161 + 544$ ) plus **73** = **5778**. The value **73** for the 9<sup>th</sup> sefira of *Chochma*, means Wisdom. This will have greater meaning for us shortly.

If that has not confused you enough, if we take the ends of the cylinder and connect them, we get a torus. Take any flexible tube, which is a cylinder and connect the ends and it can be seen clearly. In this case the matrix becomes endless with the first line following the last line as we saw with 12345678912345... that gave us 1735537198264468289, etc.





Any 2-d matrix can be geometrically represented as a 3-d torus and visa-versa. This applies to fields like that magnetic and dielectric, etc, but that is a much deeper level of physics than we want to tackle today.



## The Music of the Cosmos

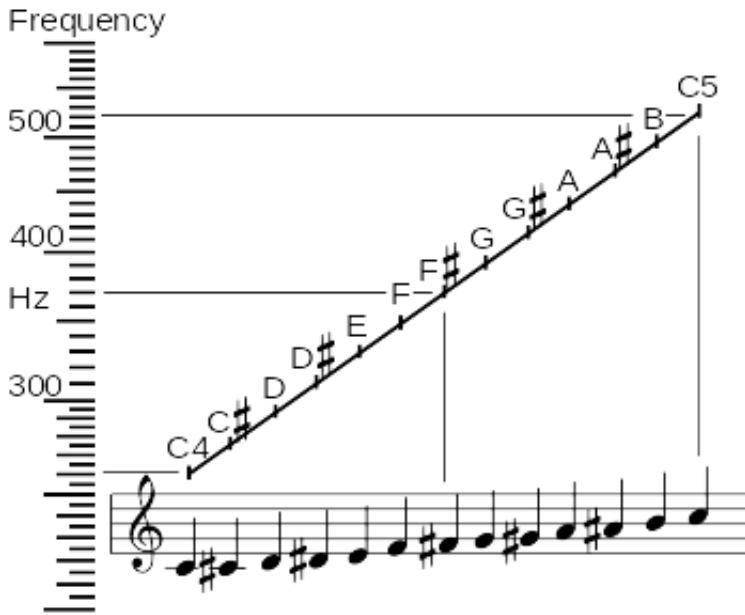
Stumbling upon this next bit was serendipitous, but with the latest connections to **2200** it does fit right in.

Note Name:	A	A# / Bb	B	C	C# / Db	D	D# / Eb	E	F	F# / Gb	G	G# / Ab	A
Note Number:	0	1	2	3	4	5	6	7	8	9	10	11	12

Full confession, I cannot carry a tune. Opera touches my soul, I get lost in classical music and most music moves me, especially from the cosmically open 60's, but what I hear in my head comes out tone deaf. Music, though, has mathematics at its core. What it also has at its core is the sacred cubit, **27.5"**. The musical scale is divided into **12** notes that seem to work most pleasingly together and in specific relationships and these are divided into an octave or **8** relationships, that keep repeating, with higher and higher octaves, each doubling the prior scale, or alternatively by halving. The typical scale begins at **220** Hz and thus the next octave (**8**) begins with **440** Hz. If we were to divide that **220** Hz between the octaves, we would get **8** evenly spaced increments of **27.5** Hz. In other words, **220** Hz = (**8** x **27.5**) = **1** Octave. The most pleasing relationship is that of the Perfect Fifth (P5) which is 1.5 times **220** Hz or **330** Hz, a musical/mathematical relationship of **3:2**. This Perfect Fifth (P5) or **330** Hz is, as we well know, the base measure of the Pyramid in cubits, or **12** x **27.5** and the perimeter of the edges of a cube of **1** cubit. Another extremely pleasing note is the Major Third (M3) at **275** or **10** x **27.5** Hz. The Major Second (M2) is **247.5** Hz or (**220** + **27.5** Hz), which is thus (**9** x **27.5**). It is interesting that this is so close to **248**, Abraham, the **248** dimensions of the E8 Lattice, etc. The Major Seventh (M7) is **412.5** Hz, which as we may recall is **3** x the Phi(?) angle or (**3** x **137.5**), equivalent to the first letter of the Torah (?) spelled out. It is also **412.5** = (**15** x **27.5**). This serves as an instruction that the first letter of the Torah (?) = (??) cubits, and as we now know, it has a tone.

Not all **12** notes can work out to be exactly **27.5** Hz apart, given that the Octave (**8**) spacing is **8** x **27.5**. For example, the Tritone is **308** Hz or **22** Hz less than **330** Hz



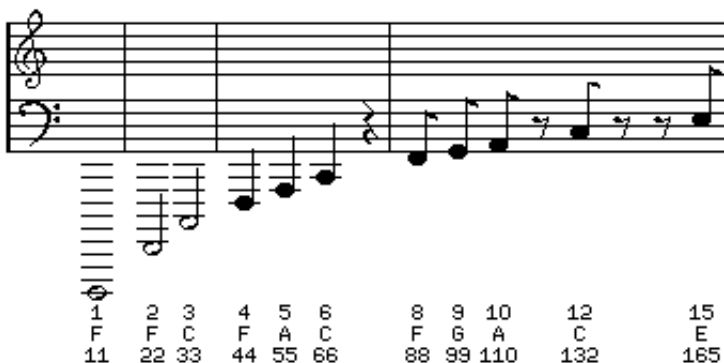


and the minor Sixth (m6) is **352** or **22 Hz** more. Together though, they are  $(308 + 352) = (2 \times 330)$ . In order to equalize the notes so that the relationships harmonize (more or less) between keys, all the values change to varying degrees, which is called just intonation in **12** part equal temperament. This effectively masks the sacred cubit. Maybe the key is to keep it in the perfect key, but the key to what? The Song of the Sea perhaps?

I guess that is what is meant by harmony in the universe. Those of you who are more astrologically or astronomically inclined can apply this to the **12** constellations.

The exile in Egypt is stated to be both **430** years and **210** years, a difference of **220** years. During those **220** years the **12** sons of Jacob and the **12** Tribes of Israel were formed. One Octave (**220 Hz** divided into **12** notes).

Think of a clock of **12**, each hour **27.5** degrees apart, **330°** in total. Each cubit degree is **1.090909** degrees of a circle, so each hour of **27.5** cubit degrees equals **30** degrees of a **360°** degree circle. Therefore, at **30°** per normal clock hour, Joseph's dream clock surrounded by **11** bowing hours would total **330°** and be in harmony with the Perfect Fifth (P5). Metaphorically, at **110** years, he would have lived  $4 \times 27.5^\circ$  hours, **10** for each of his **11** brothers. Each brother that surrounded him would represent **33°**.



---

Just as the **110** years of Joseph traces the perimeter of a square whose sides are **1** cubit each, **27.5"**, the **12** boundaries of a cube trace the edge the perimeter of a cube whose sides are **1** cubit each, **27.5"**, for a total **330"**. Each face of that cube would have an area of **756.25** square inches.

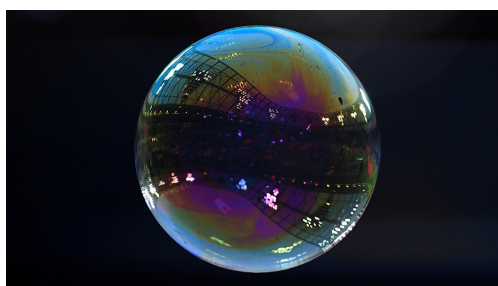
Given the connections between **12** and **330**, can the clock be a cube with each hour a different edge with a different tone until the clock strikes **12** again? The musical scale is divided into **12** notes and these are divided into an octave or **8** corners. Instead of staring at the clock on the wall, we could be inside it, in the center, staring out.

### A Piece of the Pi

As fate would have it, **330** is found in Pi at digit# **365**, as in the **365** days in the year. There are actually **365.256** days in each year and each day consists of a cycle of **12** for day and a cycle of **12** again for night, One day. The choice of **12** may have been arbitrary yet **24** hours times **365.256** days equals **8766.144** hours and we also find **8766.1** in the first **1000** digits of Pi. It is at digit #**980** with the digital string ...**8766111**..., off by **47** minutes for the entire year. The gematria of **47** is (??????). "And G-d saw that it is good." And ...**8766111**.... kicks off the very prophetic final sequence ...**192787661119590921642019893**... within that first **1000** digits.

Those **8766.144** hours per year over **5778** years amount to **50650780** hours. We can read whatever we want into that, but **506**, as refers to the **42**-Letter Name and the complete gematria of *Moshiach Ben David*, is found for the first time in Pi at digit # 1115, meaning it ends at location digit #**1118** in the middle of this sequence ...**72 424 541 506 959 50**... I do not think we need to break that down for you at this point.

### Why Does our Time Sphere Bubble have a 5778 year limit?



Why Does our Time Sphere Bubble have a **5778** year limit?

It is a good question with a simple mathematical answer that involves the shape of a sphere.

We are putting the cart before the horse here because this section, as previously explained, was more about the details of Spherical Time focusing using the Names and forces of Creation as given to us in the Torah, rather than an explanation of Spherical Time itself, which we will do in the next section. What you need to understand is that the Divine Calendar, incorporating the superimposed Western and Hebrew one, is split into two time or distance segments of **3760** years and **2018** years, and each of these correspond to synchronous spherical paradigms of time. Two spheres of the same size, occupying the same space with observed time operating at two different speeds such that they share the same event horizon yet have two different

---

diameters. The radius of one is **2018** years and of the other is **3760** years. This will be more fully explained in the next chapter.

Nonetheless, what happens when we add the circumference of the **3760** sphere and of the **2018** sphere is that we get a single circumference of exactly **36304.24470**, which represents the exact numerical values of both *H'Mosiach* (the Messiah), **363**; and *Moshiach Ben David*, **424**.

This is also the circumference of a single sphere of **5778** years, or radius **5778**. Remember time emanates spherically from the center. Imagine, man broadcast radio waves into space from earth or a satellite and it traveled outwards for X amount of years. No matter what direction the broadcast was heard or seen in, the same amount of time would have passed. One side would not be the future and the other the past; they would both be on the same time bubble relative to the emanating point. This is why **5778** is the radius and not the diameter.

With regards to its circumference it is mathematically identical whether we are discussing a sphere with radius **5778** or two spheres of **3760** and **2018**.

As you may imagine for so momentous an equation, the result, **36304.24470**, tells a deeper story. While **2447** represents the **2447** years before the reception of the Torah at Mt Sinai and is about **42.4%**, or more precisely  $\Phi(?)^3$  percent of the distance to **5778**, the number **2447** is also the **363<sup>rd</sup>** prime number. Moreover, as if that were not enough, **4470** is sum total value of the first **1000** digits of Pi, and as will be explained in the next section, it is equivalent to the **44.70** hours in the **2018** spherical day.

As we just said, with regards to its circumference it is mathematically identical whether we are discussing a sphere with radius **5778** or two spheres of **3760** and **2018** and the same holds true for any two positive numbers that add up to **5778**, but only those two will work out to a **44.70** hour day that equates them, and them to Pi.

We can now understand the hint in the Torah's first verse where its first letter, the large *Bet* (?), had a concealed value of **2018** and where there are two parallel words (???) for "creation" sandwiched around the word for **2** (???), as in the **2** parallel creations of time, the **2018** and **3760** spheres.

I know that this is a lot to take in, but I just want you to know that it all ties in with the **3<sup>3</sup>** or **27** position Essential Cube of Creation. Just note that  $(2 + 0 + 1 + 8 + 3 + 7 + 6 + 0) = 27$ , as does  $(5 + 7 + 7 + 8) = 27$ , as does David's midpoint  $(2 + 8 + 8 + 9) = 27$ , as do the other two midpoints  $(1 + 0 + 0 + 9 + 1 + 8 + 8 + 0) = 27$ , and the sum of the **10** first and pertinent digits in **36304.24470** is **33**.

What may be relevant is that the sum of each of the digits in **36304.24470** squared is **155**, the center of the **72** Names, considering that the sum of the first **10** digits in Pi (?), an integral part of this geometrical equation, is correspondingly **39**, meaning together **(33 + 39)** is **72**.

As for  $(2 \times 1 \times 8) \times (3 \times 7 \times 6) = 16 \times 126 = 2016$ , we can only assume that **2016**, as the beginning of the event Horizon, was significant. Especially so, since **2016 = (42 x 48)** with **4248** being the sum of the names of the *Alef-bet*, and since **(42 x 48)** is the sum value of all the rows, columns and diagonals of all **6** faces of the Essential Cube of Creation. Just for kickers, the

---

cube root of **48** is **3.63424**, as in **36304.24470**, the result of the equation that defines our existence.

As Dennis most recently pointed out, election night this cycle falls on the anniversary of the Flood, the 17<sup>th</sup> of Cheshvan. This is exactly **4125** years to the day after the rains fell, the waters surged, “the floodgates of heaven were opened,” and Noach and his family entered the Ark. As we just saw, this coincides with the Major Seventh (M7) or **412.5** Hz, which is also **3** times the Phi(?) angle or (**3 x 137.5** °), the **3** turns of the great hand and the **YH(??)**, representing **150** lights and cubits (**27.5**).

After the **40** days of rain ended, there began **150** days of water's swelling and churning, to a height of **15** **YH(??)** cubits above the mountain peaks.

This is the formula based on circumference of the spheres with the time spans acting as radii:

$$2(2018\pi + 3760\pi) = 36304.24470$$

This is the formula based on the surface area of the spheres with the time spans acting as diameters, given that the two radii **2018/2 + 3760/2** add up to **2889**, the midpoint in King David's life:

$$4\pi(2889)^2/2889 = 36304.24470$$

**Both equations reduce to:**

$$2(5778\pi) = 36304.24470$$

In both equations, the circumference (**2?r**) and the surface area (**4?r<sup>2</sup>**) of a sphere, an additional step must be taken to get this astonishing result. In one it is to multiply by **2**, and in the other it is to divide by the radius or the sums of the radii, in either case, **2889**. The reasoning for this it currently only known in the upper dimensions, yet when we multiply the two additional processes together, we get (**2 x 2889**) = **5778**. In other words, the relationship between the actual surface area and the actual circumference when a time span is a radius of **2889** is **5778**. In other words, the surface area is **5778** times the circumference. No other year will give us **36304.24470**

That radius of **3760/2** is **1880**, which happens to be the sum of the **2** lifespans of Adam (**930** years) and Noach (**950** years), the **1<sup>st</sup>** and **10<sup>th</sup>** in the lineage of Man. The two men lived for exactly half the timespan given to Man. Their lives did not line up back to back; there were **126** years between them, as in the central plane (**126**) encircled by the Path. Noach was born **126** years after Adam died. G-d disapproved of Adam's actions. Noach found favor in G-d's eyes. Adam began mankind, Noach preserved it. The gematria of Noach is **58** and he lived **58** years past the birth of Abraham. Finally, the **1<sup>st</sup>** and **10<sup>th</sup>** Pronic numbers are (**2 + 110**) respectively, or **112**, as in the **112** Triplets.

---

To begin to understand how ingenious this design was we need nothing more than look at the inverse of these numbers, to divide them into One (1). The inverse of a number is its counterpart, the counterspace of it. The inverse of **36304.24470** gives us the cubit, as  $1/36304.24470 = .000027545$ . The inverse of **5778** is the small gematria of the **42**-Letter Name  $1/5778 = .0001730\dots$  The inverse of the inverse of 2018 and of 3760 together  $1/(1/2018 + 1/3760) = 1313.2018$ . The year **1313** BCE is when we received the Torah at Sinai and is the number upon which the exponential scale of the *Alef-bet* was created. The difference of **(2018 + 1313) = 705**, is the value of the central Triplet is the **11** Triplets of *Bereshit*. The sum of **(2018 + 1313) = 3331**, is the number of years from **2448** HC (**1313** BCE) and **5778** HC (**2018** CE). No other combination of dates will work out that way.

$$\frac{1}{\frac{1}{2018} + \frac{1}{3760}} = 1313.2018$$

Moreover, the inverse of the inverse of the concurrent year **2018** and of **5778** together  $1/(1/2018 + 1/5778) = 1495$ , the value of the **22** letters of the *Alef-bet* with the decimal remainder truncated. Also the inverse of the inverse of the date of the Flood and of Noach's age at the Flood  $1/(1/1656 + 1/601) = 441$ , the value of the word *emet*, Truth.

The dates were built into the core and most basic mathematics of our universe and from the moment of Creation our bubble was designed to lead us to *H'Mosiach* and *Moshiach Ben David* and our freedom in a timespan of **5778** years, **5778** revolutions around the sun from the moment Man received consciousness.

It all comes back to One (1). It cannot be any other way.

In a sense this entire 780+ page paper with its in-depth analysis of endless aspects of the Torah and of the mathematical underpinnings of the universe has been about examining the how and why of this singular equation. For anyone that has not been following this series from its inception, you can find the [entire work here](#).