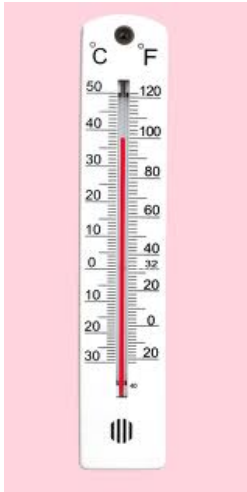


---

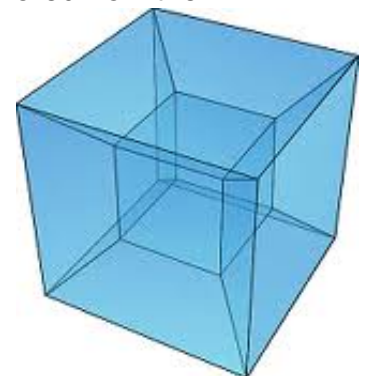
# The Future Holy Temple and the Human Body, Part III; We are One.

**Author :** Meiliken

**Date :** 28-04-2011



In our first article of this series we discussed how both the [Celsius and Fahrenheit temperature scales aligned perfectly with the specific structural design of the Future Holy Temple](#) and how the Kelvin scale and the surface temperature of the planets aligned with the dates given by the tzaddikim for the final redemption. Then we explored how the



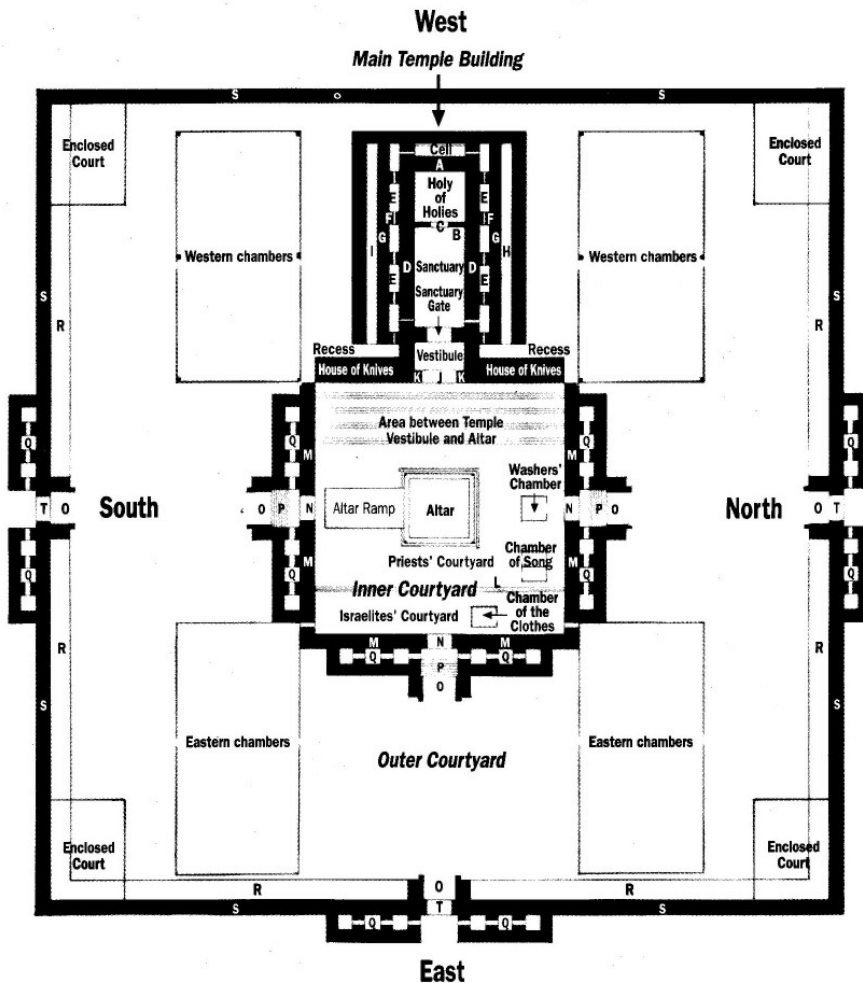
[Temple and Torah formed and further aligned with the multi-dimensional Tree-of-life](#), forming hypercubes, including one with a telltale finger pointing to 314 (Pi).

We'll go back and examine this connection to the mathematical constant Pi and the Torah and the design of the Future Holy Temple and prove that the Hebrew Alef-bet, the Ana B'koach (42-letter Name of G-d) and the Torah were constructed utilizing that primordial constant to at least 6 decimal places of accuracy in a later article in this series. Today, though, we'd like to discuss how the structure of the Future Holy Temple and the *alef-bet* are mimicked in our bodies.

## The Human Body



## Plan of the Third Temple

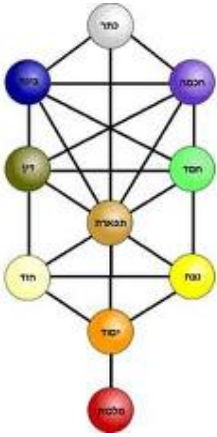


### Key:

- |  |                                |
|--|--------------------------------|
| A: Back wall of Holy of Holies         | K: Vestibule Wall              |
| B: Wall of Holy of Holies              | L: Platform and Duchan         |
| C: Entrance to Holy of Holie           | M: Inner Courtyard Wall        |
| D: Sanctuary wall                      | N: Inner Courtyard Gate        |
| E: Cells at the sides of the Sanctuary | O: Vestibule of the Gate       |
| F: Cell wall                           | P: Eight steps                 |
| G: Exterior wall of cells              | Q: Cells by the gate           |
| H: Winding staircase                   | R: Elevated paved gallery      |
| I: Rainwater spout                     | S: Wall of the Outer Courtyard |
| J: Vestibule Entrance                  | T: Gate of the Outer Courtyard |

A bone in Hebrew is "???", of numerical value **200**. It also means essence. The letters are a combination of the word for Tree "???" and the final letter *Mem(?)*. The final letter *Mem(?)* has four sides and it shaped like a square, like the **100 by 100** cubit courtyard and the **32 by 32** cubit Alter.

When it says that G-d created us in his own image. "

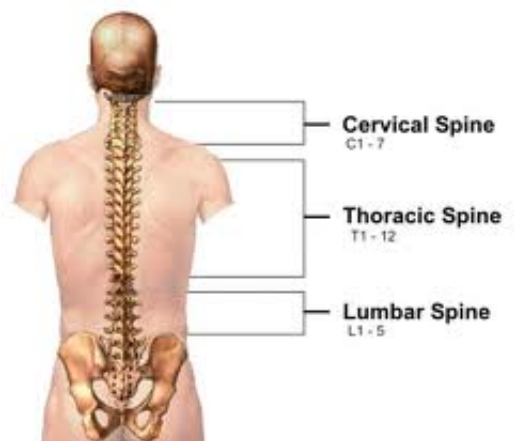


????????? ??????? ?????? ??????" It is exactly so. Image in Hebrew, *tzelem* "?????" has the same numerical value as Tree, "??". It is the Tree of Life that is inside and around us, and is constructed with the **32** Paths of Wisdom.

According to the Ramchal, the Temple's central Alter, measuring **32** by **32** cubits, is an energy pump dispersing *shefa* (life-giving energy throughout the Temple and our world. By comparison, our innermost alter is our Heart, *Lev* in Hebrew, which likewise has a numerical value of **32**. Moreover, the heart is similarly surrounded by our bones (rib cage and spine), which is our inner courtyard, and then by our *Ohr Machif*, or our surrounding Light, or aura, our outer courtyard. Depending on how we count the fused vertebra in our spine, as explained below, we either have **206** or **212** bones in our bodies. Either way, both numbers are germane to our discussion, as the number **212** is analogous to the measure of the **312** cubit wide outer courtyard less the **100** cubit square inner courtyard. And following our allusion above that would mean that our **212** bones are equal to the size of our aura.

### Central Column

That said, the central column of our bodies are comprised of **54** bones, **22** of



which are in the skull, corresponding to the **22** letters of the *alef-bet* and the **22** paths between the **10** *sefirot* of the Tree-of-life.

The other **32** bones (vertebrae) in the spine break down to the **3** bones of the Coccyx, the **7** of the neck, the **12** thoracic bones of the upper back and the **10** of the lumbar and sacrum, split evenly **5** and **5**.



Interestingly, this special distribution correspond to what Abraham's [Sefer Yetzirah \(Book of Formation\)](#) referred to as the **3** mother letters, the **7** double letters, and the **12** single letters that comprise the **22** in the *alef-bet*. Moreover, the remaining bones correspond to the **10 sefirot**, which he further describes as being split into **5** and **5**.

Also, the sacrum and the coccyx are sometimes considered as one, fused to each, reducing the number of bones in the spinal column to **26**, as in numerical value of the Tetragrammaton (**YHVH**), which is not-coincidentally the measurement of the top of the Alter, since the central Alter narrows from **32** cubits square at its base to **26** cubits square at it's summit. And thus the number of bones in our spine does as well, narrowing by **6**, as it ascends upward from its base (our buttocks) through the **6** bundled dimensions of *Zeir Anpin* toward the **YHVH**.

### Right and Left Columns

Furthermore, while the universe and the Future Holy Temple are largely symmetrical, so too is the human body, with the upper extremities having 2 times **32** bones in them, which makes **32** on the upper right half (column) of the body and **32** on the upper left half (column) of the body. These 64 bone segments break down structurally to **54** bones in the hands and **10** in the shoulders and arms.

Once again, note the symmetry, not just with the **10 sefirot** (dimensions) of the tree-of-life, but with the **54** bones of the hands with the **54** bones of the Body's central column. And as we've note in previous articles this symmetry extends to the timing of our brains which ticks at **54** beats/minute and to the [divine calendar](#) which ticks at the average Biblical lifespan of **107** years of **54** spans per prophesied **5778** years from Adam to Moshach and the *geula* (final redemption).

### Central Alter

And the complete upper chest has **24** ribs, **1** sternum, and **1** hyoid bone for a total of **26** bones protecting the Heart (of numerical value **32**), once again mimicking the central Alter of the Holy Temple, which narrows from **32** cubits at its base to **26** cubits at the summit. And just like our chest cavities, the Alter's internal summit platform is **24** cubits square, surrounded by **1** cubit on each side.

---

## Our Lower Body

The lower appendages are also split into **5** and **5** for the bones of the hips and legs and **26** and **26** for the bones of the feet, which make the feet a total of **52**, the numerical value for the aspect of the Tetragrammaton that is *Malchut*, the lowest dimension, our earthly dimension, which makes perfect sense given the relationship of the feet to the body and the feet to the earth. Moreover, this further means that the hands and the feet together, our extremities, add up to **54 + 52** bones, or **106**, which leaves **100** more centralized bones, once again maintaining the mimicking of the Holy Temple whose outer courtyard measures **106** cubits further on each side than the inner courtyard of **100** cubits square.

## The Aura and Outer Courtyard

As we said, the the **4** sides of the Outer Courtyard that lie beyond the confines of the concentric Inner Courtyard, measuring **106** cubits each side, correspond to our aura (our surrounding light). This *Ohr machief* is our potential light, and those 4 sides add up to **4 x 106**, or **424**, the numerical value of Mashiach Ben David.

## The Flow of the *Shefa* (Life-Force).

So, in summary, the central skeleton of the human body, is divided into three columns of **32**, with both chest/heart and the spinal column being analogous to the Holy Temple's central Alter. And all of them reflect the **32** Paths and **3** column structure of the Tree-of-life. Moreover, we thus see hints of a **3**-dimensional cube of measuring **32 x 32 x 32**. The body can also be defined as an outer and inner structure, comprised of **106** and **100** bones respective just like the outer and inner courtyards of the Holy Temple. And while, no one would call our bones the gateways to our bodies,



they do support them like scaffolding to a building. And as the *shefa* (life force) flows through the Holy of Holys in the Future Temple and through the *sefirot* (dimensions) to all the creatures of our world, it passes first through the gate of **42** that's **6** cubits high by **7** wide, then out through the Gate of the Temple, then the Gate of the Inner Courtyard, and then the Gate of the Outer Courtyard, before finally filling the Gate of the Temple Mount, each of which is **50** cubits tall. The collective height of the **4** Temple Mount Gates plus the height of the Holy of Holy Gate totals **206** cubit, reminiscent of the **206** bones in our bodies that give us our height.

## Dry Bones and Final Redemption

---

Even the word for cubit, *Emah (EMH)* when spelled out (*ELP-MM-HY*) has the numerical value **206**, for this is how we measure man. And when the letters are permuted, they spell *Meah (MEH)* the Hebrew word for “**100**,” our inner measure.

As it says in Devarim **20:19**, “...a person is a tree of the field...” And so it is supposed to be, according to the tzaddikim, in **2019**, we will once again be as the Tree-of-Life, with our alters in tune with the harmony of the universe’s 10 dimensions.

But before we get to that, let’s note that **312**, the measure of the full outer courtyard, is the numerical value of the Hebrew word *yavesh*, meaning dry, as in the dry bones of Ezekiel 37:1-28, the verses that speak of the *geula* (final redemption) when the spirit of G-d reanimates and brings to life the dry bones.

The word Ezekiel uses for bones, *Atzmot* has a numerical value of **606**, the same as the collective height of the **13** Gates (**12 x 50 + 6**) of the Holy Temple.

Let's let the *shefa* enter our bodies and bones, may it flow through the Gates of the Future Holy Temple soon. The Temple stands ready, built for us in spiritual form, hovering over Jerusalem, waiting as the waters of the Sea of Reeds waited for their moment, waiting for unity amongst the people, waiting for Moses and his staff engraved with the [Name of 42](#) and the Name of 72, waiting for us.

### **Ezekiel 37:1-28**

The following are the most pertinent of the dry bones prophecy of Ezekiel to the above article:

**Ezekiel 37:1.** The hand of the Lord came upon me, and carried me out in the spirit of the Lord, and set me down in the midst of the valley, and that was full of bones.

**Ezekiel 37: 2.** And He made me pass by them round about, and lo! they were exceedingly many on the surface of the valley, and lo! they were exceedingly dry.

**Ezekiel 37: 4.** And He said to me, "Prophecy over these bones, and say to them, 'O dry bones, hear the word of the Lord.'

**Ezekiel 37: 5.** So says the Lord God to these bones; Behold, I will cause spirit to enter into you, and you shall live .

**Ezekiel 37: 9.** Then He said to me, "Prophecy to the spirit, prophecy, O son of man, and say to the spirit, 'So says the Lord God: *From four sides come*, O spirit, and breathe into these slain ones that they may live.' "

**Ezekiel 37: 10.** And I prophesied as He had commanded me, and the spirit came into them, and they lived and stood on their feet, a very great army, exceedingly so.

**Ezekiel 37: 11.** Then He said to me, "Son of man, these bones are all the house of Israel.

**Ezekiel 37: 21.** And say to them, So says the Lord God: Behold I will take the children of Israel from among the nations where they have gone, and I will gather them from every side, and I will bring them to their land.

**Ezekiel 37: 26.** And *I will form a covenant of peace for them, an everlasting covenant shall be with them; and I will establish them and I will multiply them, and I will place My Sanctuary in their midst forever.*

**Ezekiel 37: 28.** And the nations shall know that I am the Lord, *Who sanctifies Israel, when My Sanctuary is in their midst forever.* "